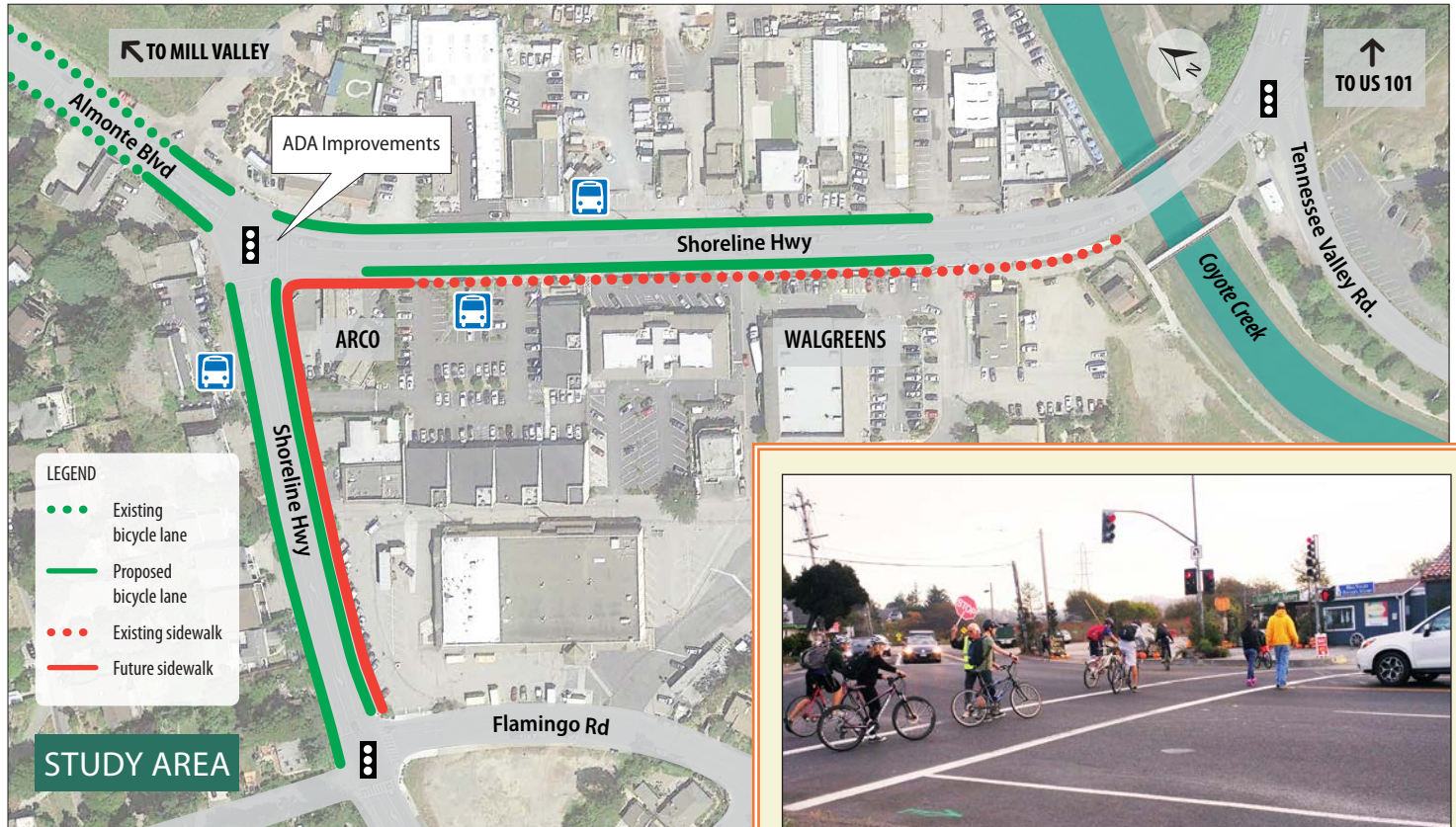


COMMUNITY WORKSHOP – DECEMBER 2

Bicycle & Pedestrian Planning at Shoreline Highway between Flamingo Road and Coyote Creek



JOIN THE PROCESS

Come to share ideas and learn more about planned bicycle and pedestrian improvements on Shoreline Boulevard. The Transportation Authority of Marin has been developing a plan to provide bicycle lanes on Shoreline Highway in both directions between Flamingo Road and Coyote Creek. Simultaneously, Caltrans has been working to develop a plan to close pedestrian facility gaps and widen sidewalks on the west and south side of Shoreline Boulevard.

Every day hundreds of pedestrians and cyclists travel within the Tam Junction corridor. Student, recreational and commuter bicyclists travel along the corridor in large volumes, sharing the outside travel lanes with motorists. Additionally, numerous pedestrians, including students, and bus riders walk along the highway's shoulders where sidewalks are lacking.

HOW YOU CAN GET INVOLVED:

- **Wednesday, December 2, 2015, 6 to 8 p.m.**
Attend the initial community workshop at the Tamalpais Valley Community Center, 203 Marin Avenue, Mill Valley, to learn more about the project's purpose and to provide input on existing pedestrian and bicycle issues
- **Send comments or questions or ask to receive email updates about the study and upcoming meetings to:** Dan Cherrier, Principal Project Delivery Manager, Transportation Authority of Marin (415) 226-0829, dcherrier@tam.ca.gov

