



November 30, 2017

TO: Transportation Authority of Marin Board of Commissioners
FROM: Dianne Steinhauser, Executive Director
SUBJECT: Executive Director's Report – Agenda Item 6, (Discussion)

LOCAL

TAM's 'GetSMART17' Lyft Pilot Program



TAM's GETSMART17 Pilot program is in its third full month. Initial ridership numbers are being reported and TAM staff is working with Lyft and Whistlestop to determine trends and analysis metrics for this program. Ridership is growing month to month, with approximately 60 rides requested in September and 179 rides requested in October through the Lyft App. With the disruption of the north bay fires, TAM staff is eagerly awaiting November and December trends of the pilot program and have been discussing initial results with transit operators

for their use. TAM staff will bring back a full report on pilot usage in 2018, as trends normalize. As the pilot was funded with one-time only funds, options for replacing the program will need to be considered utilizing the data that is developed.

Expenditure Plan Advisory Committee



The Expenditure Plan Advisory Committee held their ninth meeting on November 15, 2017. The committee consists of 24 residents representing an array of interests and organizations in Marin County. The committee met between June and November and the final meeting in November culminated with consensus on a Draft Expenditure Plans for renewing the ½-cent and increasing by ¼-cent, and a recommendation to pursue renewal of the ½-cent sales tax measure in

November 2018. A report on the draft expenditure committee process and outcome will be brought to the Board as a discussion item on December 11 followed by a reception.

Background: The committee received education about the current ½ cent sales tax and heard from a variety of agencies about current programs and unmet transportation needs, including Marin Transit, Golden Gate Transit, Public Works Directors regarding local road and major roads, TAM staff regarding highway and interchange projects, Safe Routes to School program managers and County of Marin staff representing Bay Wave and C-Smart Vulnerability Assessments. The committee has review poll results, revenue projections and key principles including the three E's, Economy, Environment and Equity. A report on the draft expenditure committee process and outcome will be brought to the Board in December.

REGIONAL

Regional Measure 3



Regional Measure 3 is progressing after Senate Bill 595 (Beall) received the Governor's signature on October 10, 2017 authorizing MTC to place a measure on the ballot to increase tolls on Bay Area toll bridges to fund transportation projects. MTC will host a workshop for Commissioners on December 20 to provide a status update on the effort and receive input, including the level of toll increase, special toll exemptions, and other key issues. MTC is expecting to approve details of the ballot measure in January 2018. In order to place the measure on the ballot in June 2018, MTC will need submittal to each county registrar for each of the 9 Bay Area Counties in early March, 2018, including authorization by the Board of Supervisors. The toll increase would require a 50% approval by voters. Projects funded by the toll revenue all show a nexus – a benefit – to the toll bridge users who pay the fee. The suite of projects submitted by TAM that are included in the Measure include: the Bettini Transit Center (\$30m), the Marin-Sonoma Narrows (\$120m), Richmond-San Rafael Access Improvements (\$210m with \$135m committed for the Northbound 101-Eastbound 580 Connector), and State Route 37 improvements(\$100m). Other potential Marin benefits included in the measure are a share of North Bay Transit Access Improvements (\$100m), a share of Bay Trail/ Safe Routes to Transit improvements (\$115 m) and the SMART rail extension in Sonoma to Windsor and Healdsburg (\$40m).

Access Improvements to the Richmond San Rafael Bridge

Construction on East Sir Francis Drake Blvd approaching the Richmond San Rafael Bridge is now well underway. The first order of work consists of roadway widening to shift the eastbound lane drop from two lanes to one lane approximately 1000' further from its current location. TAM has been pursuing access improvements to the two approaches from Northbound 101 to the Richmond San Rafael Bridge which includes the Bellam Blvd access route in San Rafael and East Sir Francis Drake Blvd in Larkspur. The City of Larkspur Public Works Department is managing the construction phase of the East SFDrake project. The improvements should be substantially complete prior to the opening of the third eastbound lane on Richmond San Rafael Bridge, especially as the third lane eastbound continues to be further delayed in its opening. Some final resurfacing and striping work may be delayed until early spring due to weather. This will not affect or delay the implementation of the operation improvements that will result in travel time savings. The TAM Board authorized using the ½ cent Transportation Sales Tax for both of these projects.



STATE

Revised CEQA Transportation Guidelines Released - SB 743

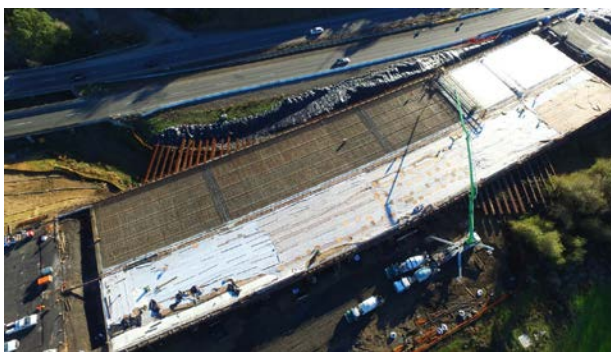
On Monday November 27th, the state Office of Planning and Research released their revised guidelines for transportation analysis under SB 743 in CEQA, removing level of service analysis or traffic delay measures from consideration under CEQA. OPR will be submitting this revised language to the state Natural Resource Agency for a formal rulemaking process, expected to take approximately 6 months. After adoption, lead agencies can immediately begin using the new guidance; the statewide implementation deadline is January 1st, 2020.



Governor's Office of
Planning and Research

Under this guidance housing and commercial projects will not be allowed to use traffic delay measures such as LOS as part of CEQA analysis; however local jurisdiction discretionary project approval requirements could still use LOS metrics. For roadway projects that increase capacity, agencies have discretion over the appropriate measure of transportation impact, however VMT is suggested in related technical advisory documents.

Marin-Sonoma Narrows



The Marin-Sonoma Narrows B3 project reached a critical milestone on Wednesday, November 29, completing the final concrete pour for the roadway deck of the new bridge over San Antonio Creek. The crews will now prepare to shift the southbound traffic to the new roadway alignment and bridge in early 2018. After southbound Highway 101 traffic is shifted, crews will begin to build the future northbound Highway 101 lanes and will create new frontage roads and bike lanes for local traffic. The B3 project is expected to be complete in late 2018. The B3 project, part of the 17-mile Marin Sonoma Narrows, replaces the San Antonio Creek Bridge and realigns a portion of Highway 101 to the west, out of the flood plain, widens the roadway for eventual carpool lanes, eliminates at grade crossings for safety and builds frontage roads with bicycle lanes. Additional funding is being sought to complete the final portions of Marin-Sonoma Narrows in Marin and Sonoma.

State Route 37



Caltrans in cooperation with TAM, MTC, SCTA, NVTA and STA have released a survey to receive public input about what is important to users of the Highway 37 corridor.

The survey website address is <https://app.maptionnaire.com/en/3469>

The survey is designed to help the project team better understand:

- How people travel SR 37,
- Where improvements are needed, and
- If there is support for alternative funding sources so improvements can be completed on a shorter timeframe.

The survey takes about 10-15 minutes to complete and respondents can enter a drawing to win a \$25 gift card. Four winners will be selected each week through early January 2018.

TAM Outreach

Date	Meeting Title	Organization/Agency
10/31 - 11/2/2017	Focus on the Future	Self-Help Counties Coalition
11/3/2017	Richmond San Rafael Bridge Outreach Coordination	MTC/BATA
11/4/2017	Miller Fest	City of Mill Valley
11/7/2017	Expenditure Plan Advisory Committee	Transportation Authority of Marin
11/15/2017	Expenditure Plan Advisory Committee	Transportation Authority of Marin
11/16/2017	RM3 Outreach Planning CMA's	MTC/BATA
11/16/2017	Safe Routes to School Elected Officials Liaison Meeting	Transportation Authority of Marin
12/1/2017	CMA Directors Meeting	9 county CMA's in the Bay Area