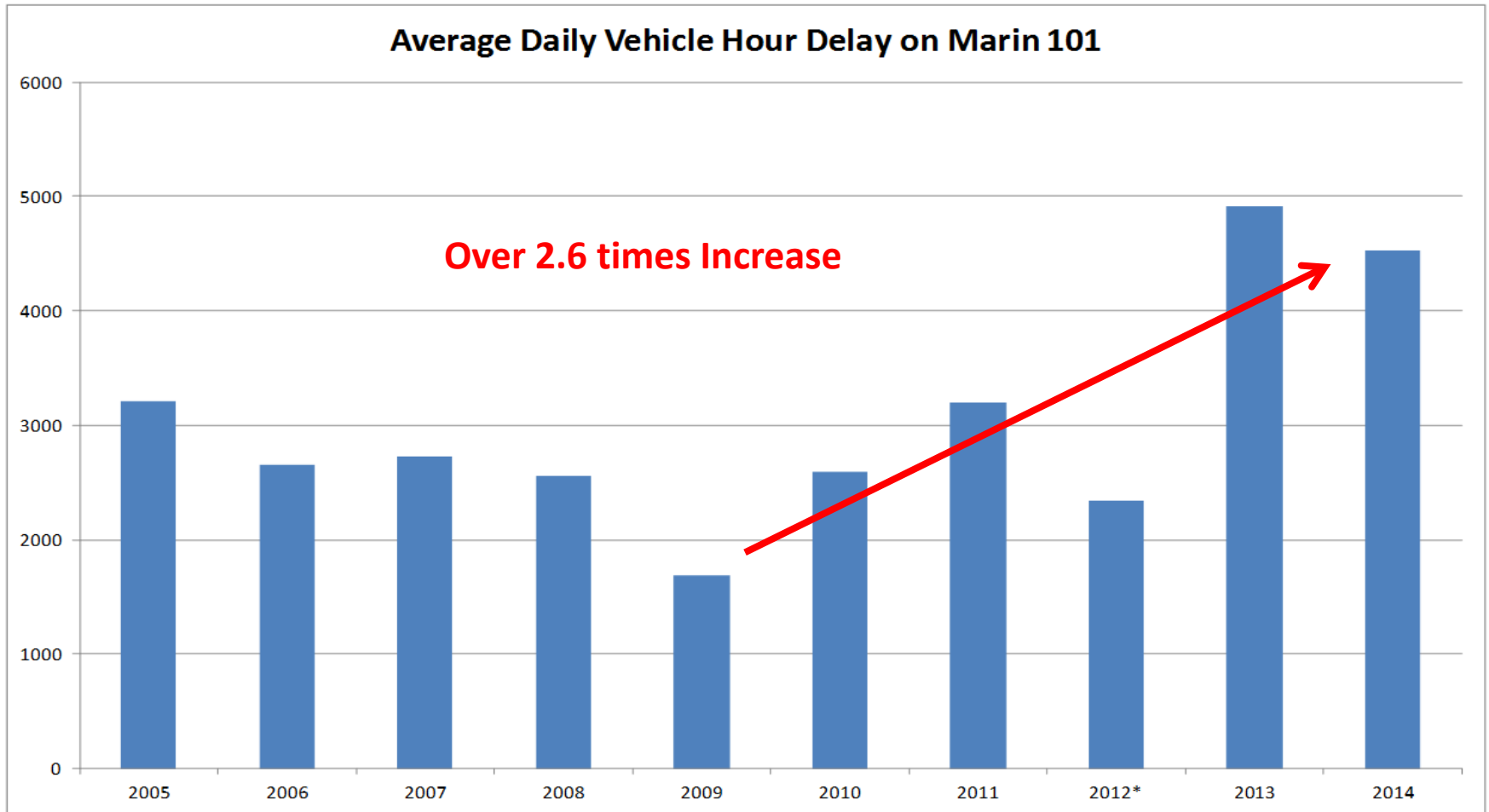




# Marin-Sonoma Narrows

February 28, 2018

# Hours of Delay

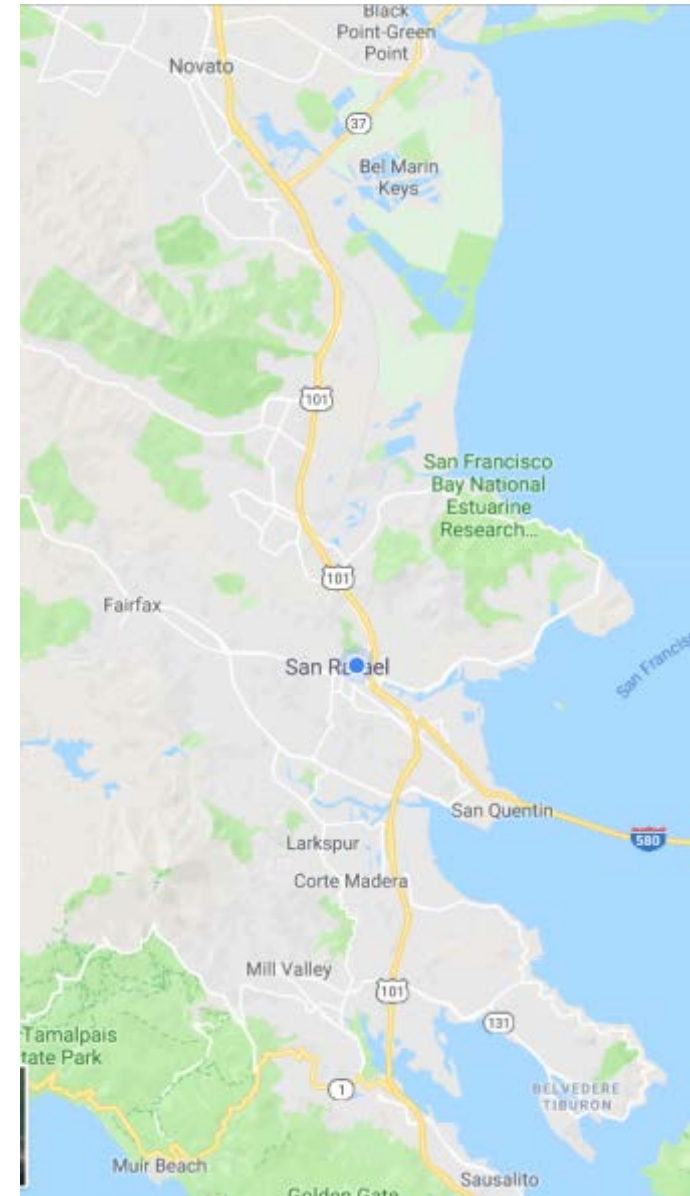


Source: PeMS

# Average Daily Trips – 101 Corridor Marin

Traffic on Highway 101 at the following locations:

- Novato Blvd.
  - 2001 139,000
  - 2015 155,000
- Freitas Parkway / N. San Pedro
  - 2001 186,000
  - 2015 204,000
- Sir Francis Drake Blvd.
  - 2001 176,000
  - 2015 187,000
- Tamalpais Blvd.
  - 2001 170,000
  - 2015 184,000
- State Route 1
  - 2001 133,000
  - 2015 142,000





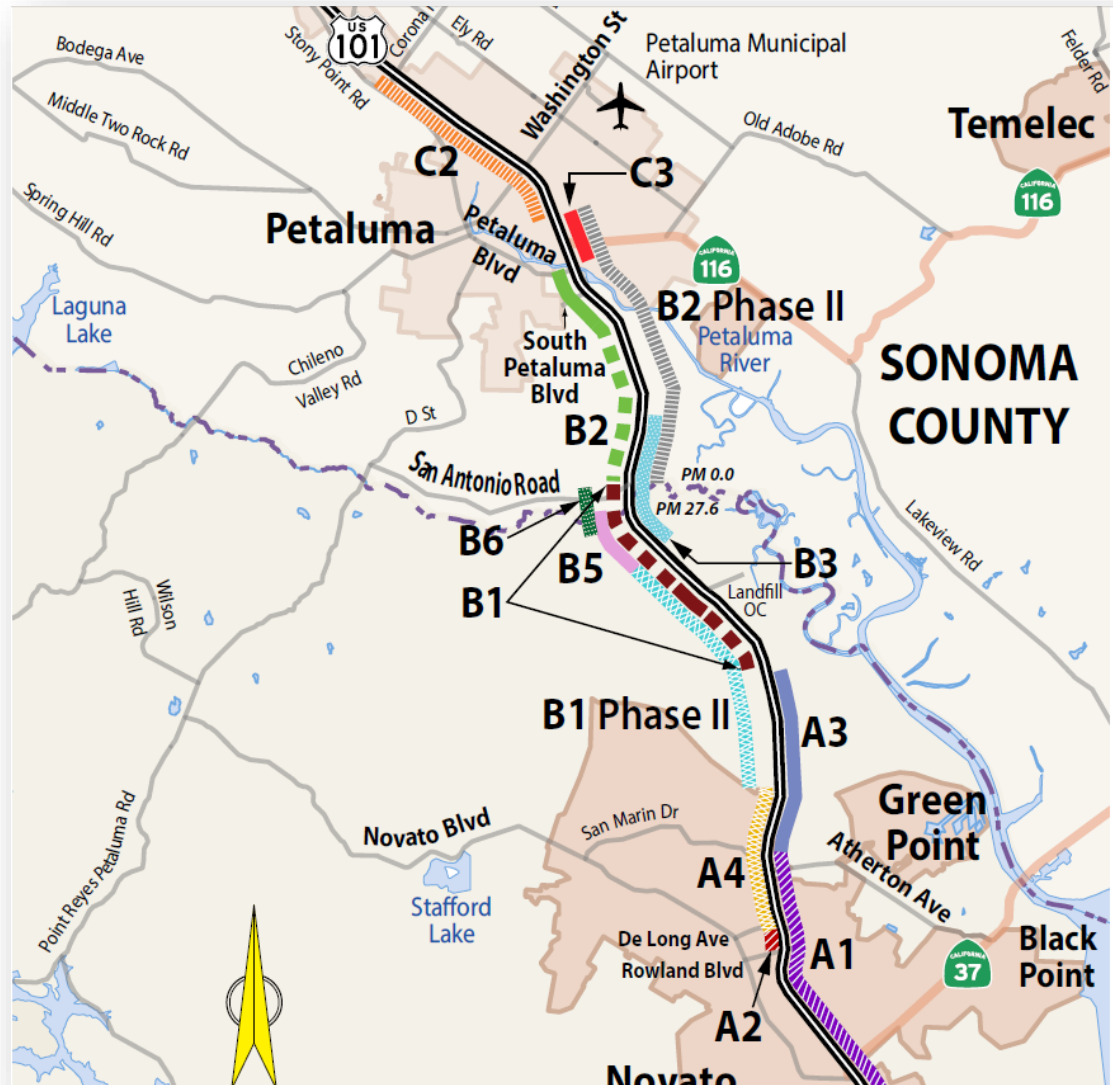
# Hwy 101 – Marin-Sonoma Narrows (MSN)



# MSN - 17 miles of Improvements

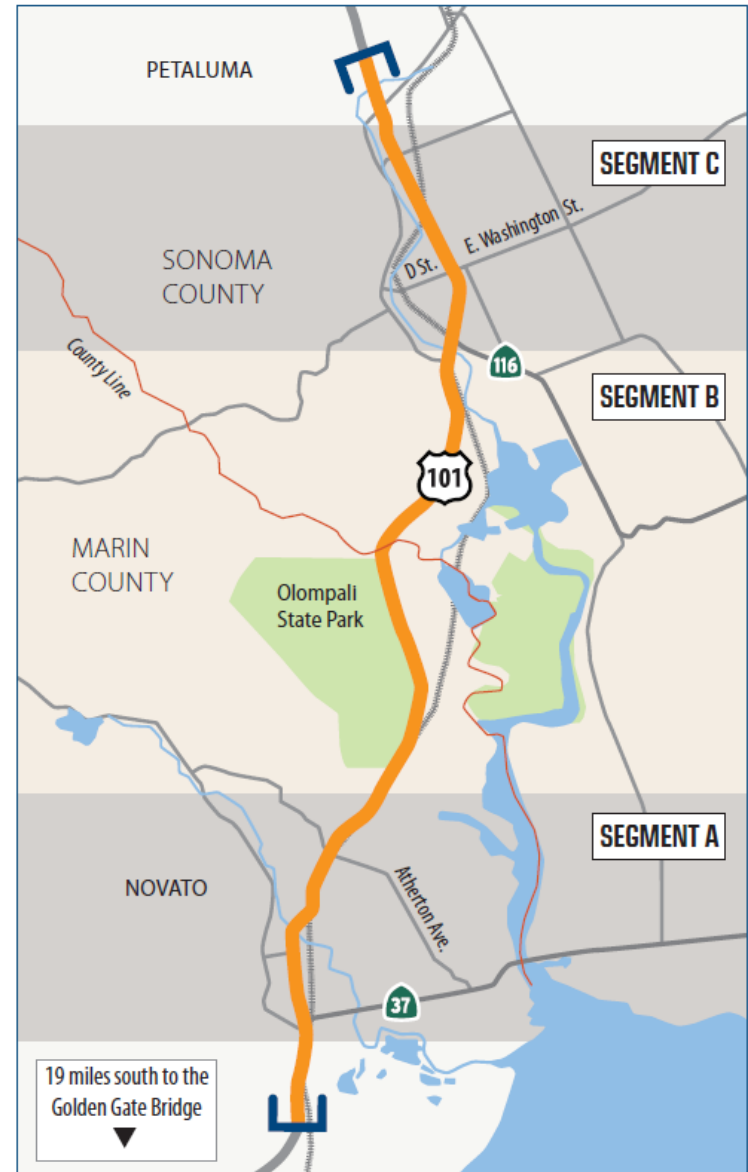
**Clearly Defined Need:**  
The Hwy 101 corridor is a lifeline for Northern California commuters and business

**Cost at time of EIR/EIS approval in mid-2009 was \$743 million for the corridor- significant progress has been made**



# Key Benefits and Features

- Congestion Relief
- Safety
- Flood Protection
- Continuous Carpool lanes
- Frontage roads to remove unsafe access from private properties and local roads
- Class I and Class II bikeways between Novato and Petaluma





# Eliminate uncontrolled Crossings



# Raise the Highway out of the Floodplain

- Prevent future closures





# HOV Lanes and Soundwall



MSN Segments A1, A2  
and A3 – HOV Lanes

Before



After – HOV lane  
and soundwall

# Relocate bikes from the freeway shoulder





# Landfill Interchange and Frontage Road

Before

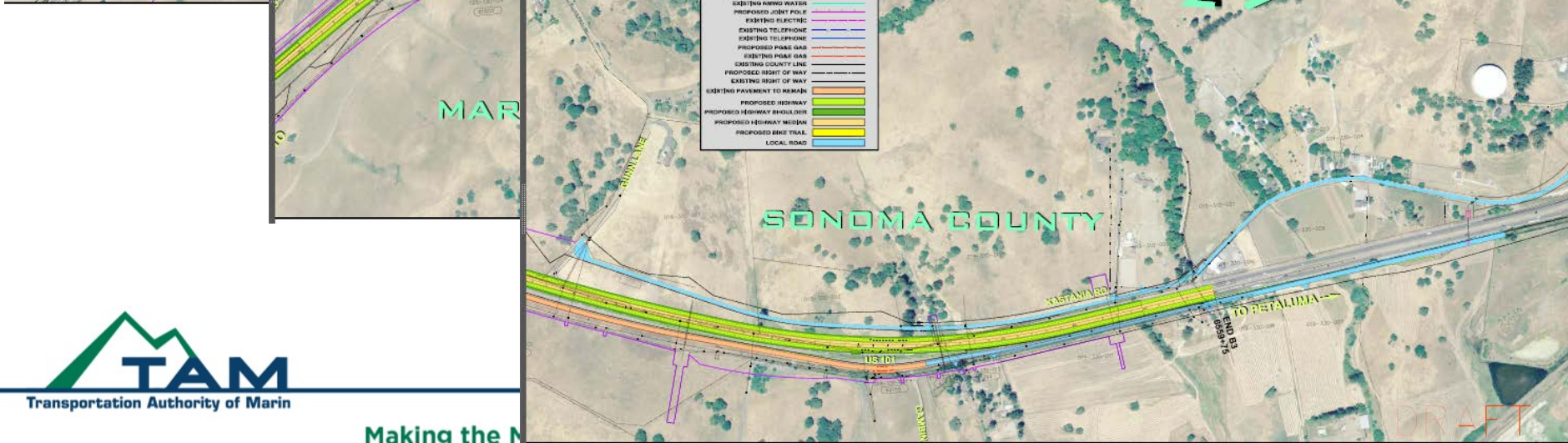
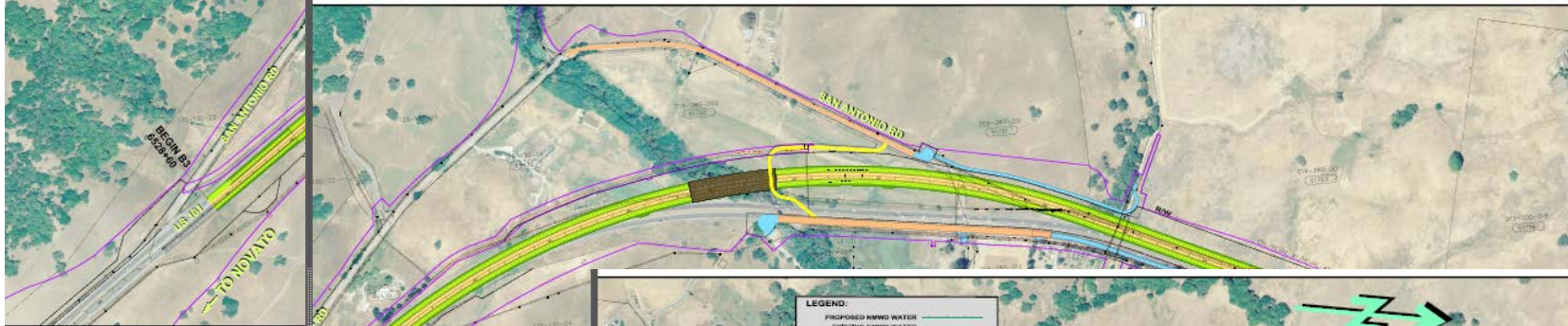


After





# B3 - San Antonio Creek Bridge – Construction Underway





# B3 - Early Construction and Flooding





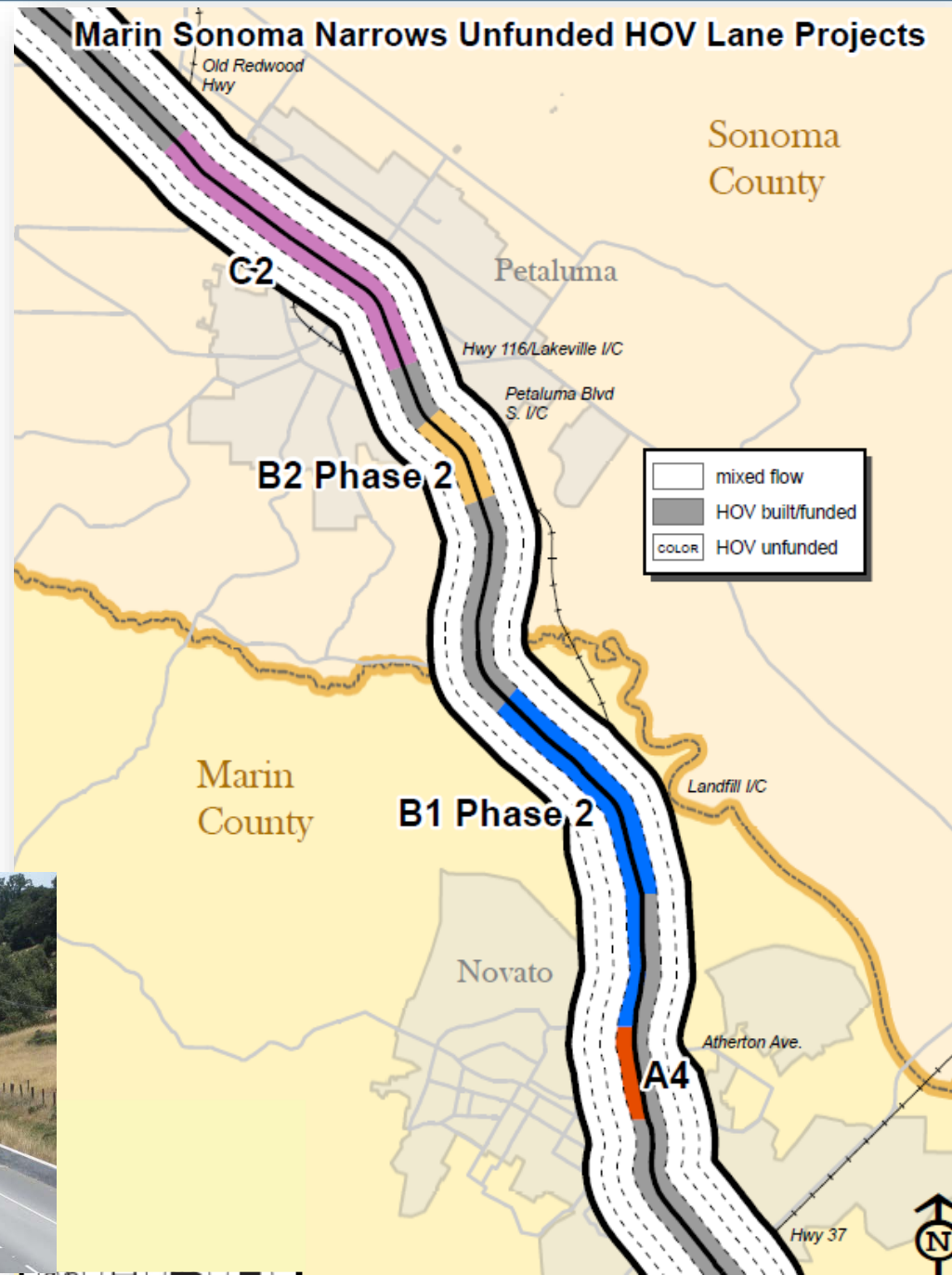
# New Alignment – Out of Floodplain





# Key Remaining Projects in Marin

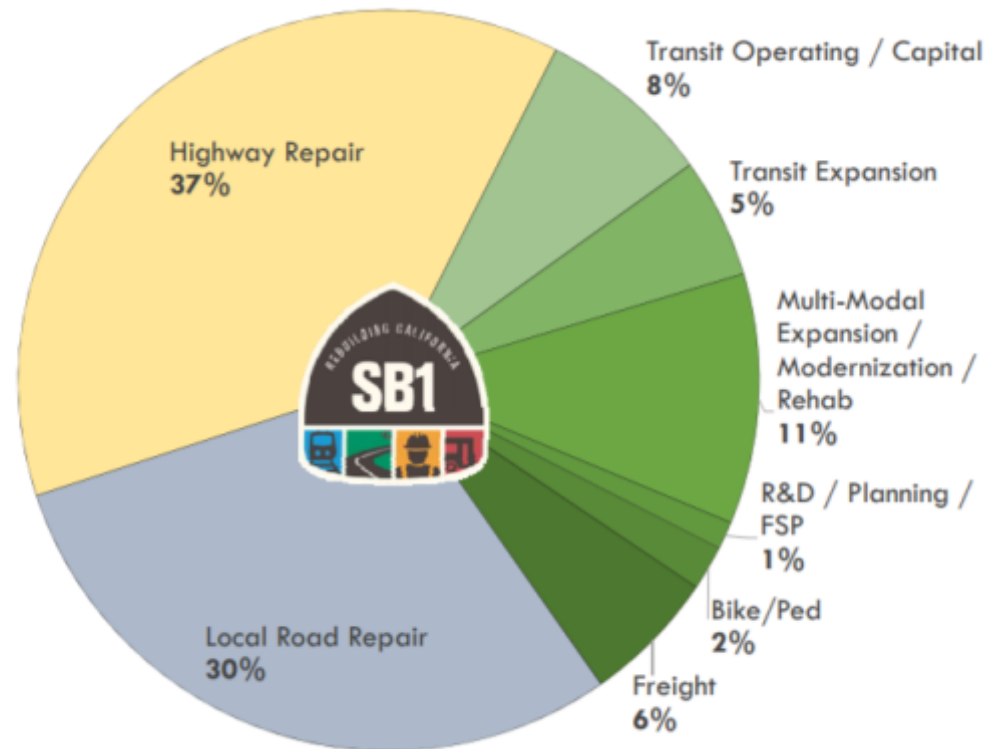
- **B1 Phase 2 & A4**
  - Estimate to complete in Marin is \$105 million
  - Marin/ TAM Investing \$1.2 million in local and LPP funds to start design & right of way
  - Need \$7 million total to complete design and right of way/utility/permitting work by Spring 2020- positioning project for construction funds



# Senate Bill 1

## Senate Bill 1 (SB 1) Overview Road Repair and Accountability Act of 2017

- Signed into law  
April 28, 2017
- \$54 billion**  
over 10 years
- Formula and competitive  
programs



# Senate Bill 1

- SB1 invests \$5.2B annually over the next decade to fix California's transportation system.
  - Solutions for Congested Corridors Program is a source for finishing the Narrows in Sonoma and Marin





# Regional Measure 3

- All 9 counties will be placing a ballot measure to increase tolls on Bay Area toll bridges to be considered by voters in June 2018- RM3.
  - Requires 50% approval
  - Projects funded by the toll revenue must show a benefit to the toll bridge users who pay the fee.



# Regional Measure 3 – Marin County

- The Downtown San Rafael Transit Center Relocation- \$30m
- NB Highway 101 to EB I-580 Direct Connector – \$135m (\$210m for overall Richmond-San Rafael approaches)
- Marin-Sonoma Narrows - \$120m
- State Route 37 Improvements – \$100m



# Regional Measure 3 – Marin County

- San Francisco Bay Trail Improvements / Safe Routes to Transit - \$150 million
- SMART Extension - \$40 million
- North Bay Transit Access Improvements – \$100 million







# Discussion