

The renewal of the transportation sales tax will help to rebuild our local roads, provide safe routes to schools, support transit and key highway improvements, reduce congestion, and promote sustainability throughout Marin County.

The Measure A transportation sales tax is set to expire and we need this vital transportation fund to continue funding transportation improvements in Marin. Renewal of Measure A will not increase your taxes, but it will help fund transportation projects that will make getting around on foot or by bike, car, or transit even easier.

What has Measure A accomplished?

In 2004, Marin County voters approved a 20-year half-cent sales tax measure (Measure A) to fund county-wide transportation projects and address a severe funding shortfall. Measure A was instrumental in transforming Marin County's transportation programs and infrastructure over the past 14 years, providing:



\$25 MILLION WAS PROVIDED TO COMPLETE THE HIGHWAY 101 HOV CARPOOL LANES THROUGH SAN RAFAEL, CLOSING A 3-MILE GAP THAT CAUSED SEVERE CONGESTION. *MEASURE A* ENABLED MARIN COUNTY TO ATTRACT OVER \$75 MILLION IN REGIONAL, STATE, AND FEDERAL FUNDS TO FINISH THE PROJECT

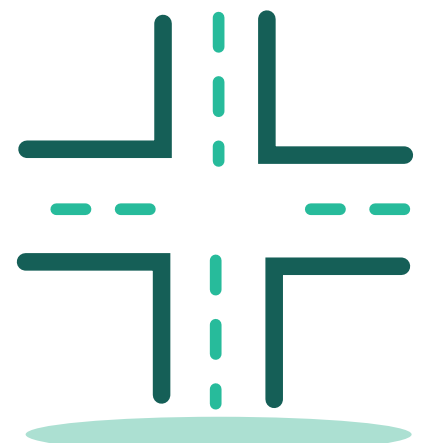


DOUBLED TRANSIT SERVICE SINCE 2004, AND ESTABLISHED NEW SERVICES, INCLUDING THOSE FOR SENIORS AND PEOPLE WITH DISABILITIES



ALLOCATED \$60 MILLION TO POT HOLE REPAIR AND STREET REHABILITATION, IMPROVING LOCAL STREETS FOR DRIVERS, BICYCLISTS, PEDESTRIANS, AND TRANSIT RIDERS

BUILT NEARLY \$20 MILLION IN SAFE PATHWAY IMPROVEMENTS TO AND FROM SCHOOLS, SUPPORTED EDUCATION AND ENCOURAGEMENT OF WALKING AND BIKING THROUGH THE SAFE ROUTES TO SCHOOL PROGRAM IN NEARLY 60 SCHOOLS IN MARIN, AND PLACED OVER 80 CROSSING GUARDS NEAR SCHOOLS



DESIGNED AND IMPLEMENTED LOCAL ROAD IMPROVEMENTS TO MEET THE NEEDS OF ALL USERS

Why does Marin County need to renew its transportation sales tax?



Top: Highway 101 through Marin
Middle: West Marin Stagecoach transit service
Bottom: Students participating in TAM's Safe Routes to Schools Program

- The **current plan is 15 years old**, and the needs of our Marin County residents and workers have changed.
- Extending this sales tax measure will create **a reliable funding stream** that enables cost-effective planning for the future.
- **Local funds** attract millions of additional dollars in federal, state, and regional transportation funds.
- Finish the narrows - these sales tax funds will help **complete the widening of the Marin-Sonoma Narrows**.
- Build the connector - these sales tax funds will **support building the direct connector** between Northbound 101 and Eastbound 580.
- The local revenue will **maintain, operate and sustain local streets and roads** throughout Marin.
- Save the crossing guards - the sales tax renewal will **save the school crossing guards** that would otherwise be cut and will increase the number of guards from 58 to approximately 96.
- The Expenditure Plan includes a new category for **Highway 101 interchange improvements**, including 11 key interchanges.
- The sales tax renewal will provide **dedicated funds for school bus services**.
- Drive clean - the sales tax supports investments in **clean vehicle infrastructure for alternative fuel vehicles**, including electric vehicles.
- **Protect and expand the Safe Routes to Schools program** - the sales tax supports all aspects of Marin's Safe Routes to Schools program, including education & encouragement, crossing guards, and safe pathway projects around schools.
- **Support an age-friendly Marin and increase senior mobility** - the sales tax increases funds for senior mobility and addresses the needs of those with disabilities, the frail and the elderly.
- The Expenditure Plan provides **seed funds for new categories**, to address sea level rise and to bring new technologies to Marin.
- Continue Marin County's **commitment to local transit** that supports sustainable mobility and reduces congestion.

What is the plan for sales tax renewal funds?

All trips start on local streets and roads, whether you are driving, walking, biking or taking transit. Marin's transportation system relies on local funding, and much of this comes from a local transportation sales tax measure.

Renewing the existing sales tax will provide funding for high-priority transportation needs without imposing any new taxes on Marin County voters. This revenue source will provide a long-term, reliable transportation funding stream, and create an opportunity to invest funds to support local needs and priorities. The sales tax renewal funds the following categories:

REDUCE CONGESTION ON HIGHWAY 101 AND IMPROVE INTERCHANGES



- Leverage local matching funds to accelerate completion of the Marin-Sonoma Narrows carpool lane and adjacent multi-use path
- Leverage local matching funds to accelerate completion of the Highway 101/ I-580 direct connector
- Improve Highway 101 local interchanges and freeway access routes
- Implement commute alternatives and trip reduction programs

MAINTAIN, IMPROVE, AND MANAGE LOCAL TRANSPORTATION INFRASTRUCTURE



- Maintain and improve local roads to provide safe and well-maintained streets designed with complete streets principles
- Provide safe pathways for people walking and biking to schools
- Develop projects to address sea-level rise and resiliency, including alternative fuel facilities
- Support operational improvements through innovative technology



REDUCE SCHOOL-RELATED CONGESTION AND PROVIDE SAFER ACCESS TO SCHOOLS.

- Maintain the Safe Routes to Schools program
- Expand the crossing guard program, providing funding for up to 96 new crossing guards
- Provide additional funding for small safety-related projects around schools



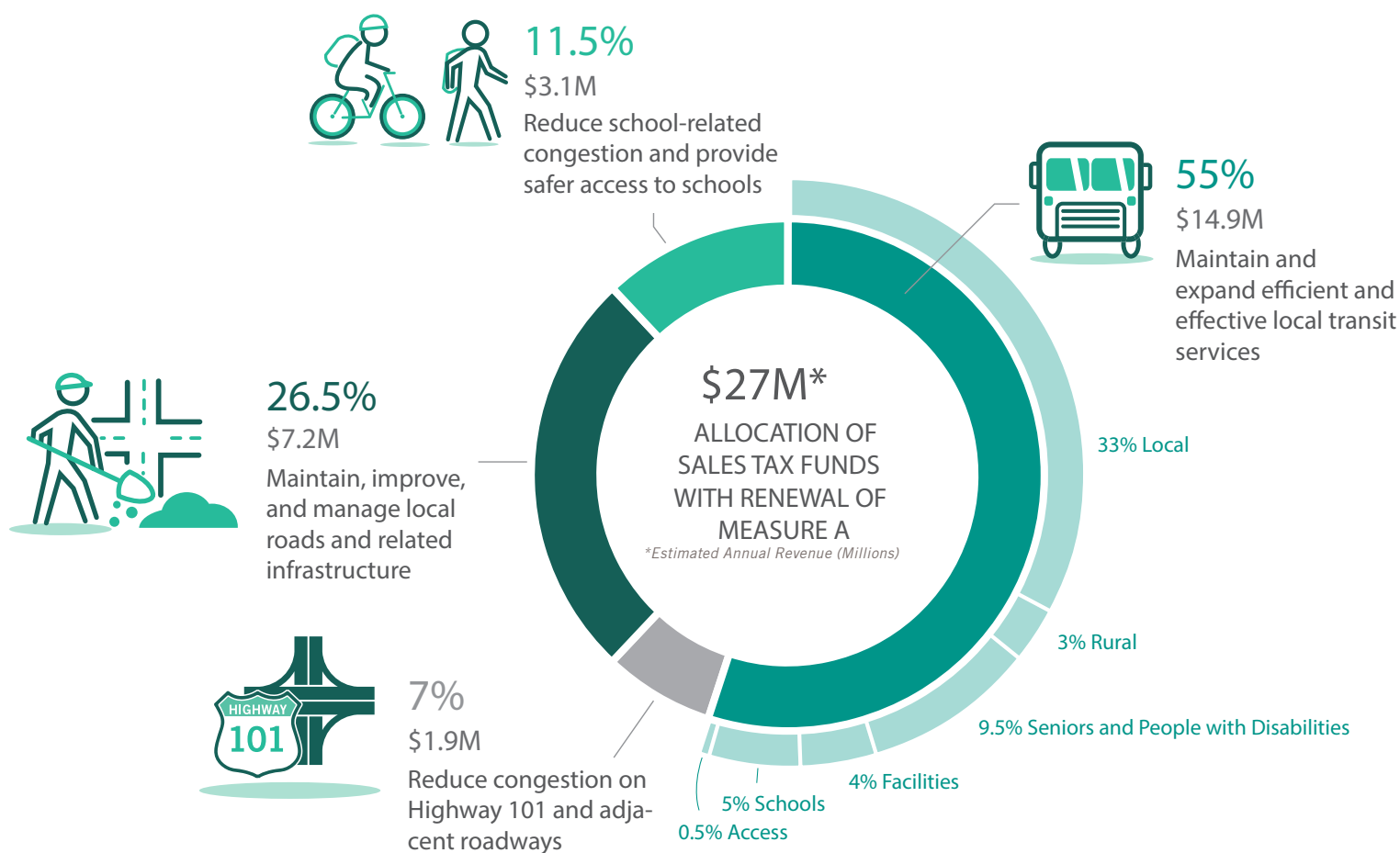
MAINTAIN AND EXPAND LOCAL TRANSIT SERVICES

- Maintain and improve existing levels of local transit service, and expand rural and recreational transit service
- Maintain and expand services for seniors and people with disabilities including those who are low-income
- Provide transit services to schools to reduce local congestion, including yellow school bus services
- Invest in bus transit facilities, including the transition to a green transit fleet
- Expand access to ferries and regional transit managed by Golden Gate Transit

OUR GOAL

Reduce congestion and reduce greenhouse gas emissions, maintain and improve local transportation infrastructure, and provide high quality transportation options for people of all ages who live, work, and travel in Marin County.

How will sales tax funds be distributed?



FOR MORE INFORMATION

<http://www.tam.ca.gov>