

State Route 37: Resilient State Route 37 Program MOU

Transportation Authority of Marin BOARD Meeting – 2/28/19



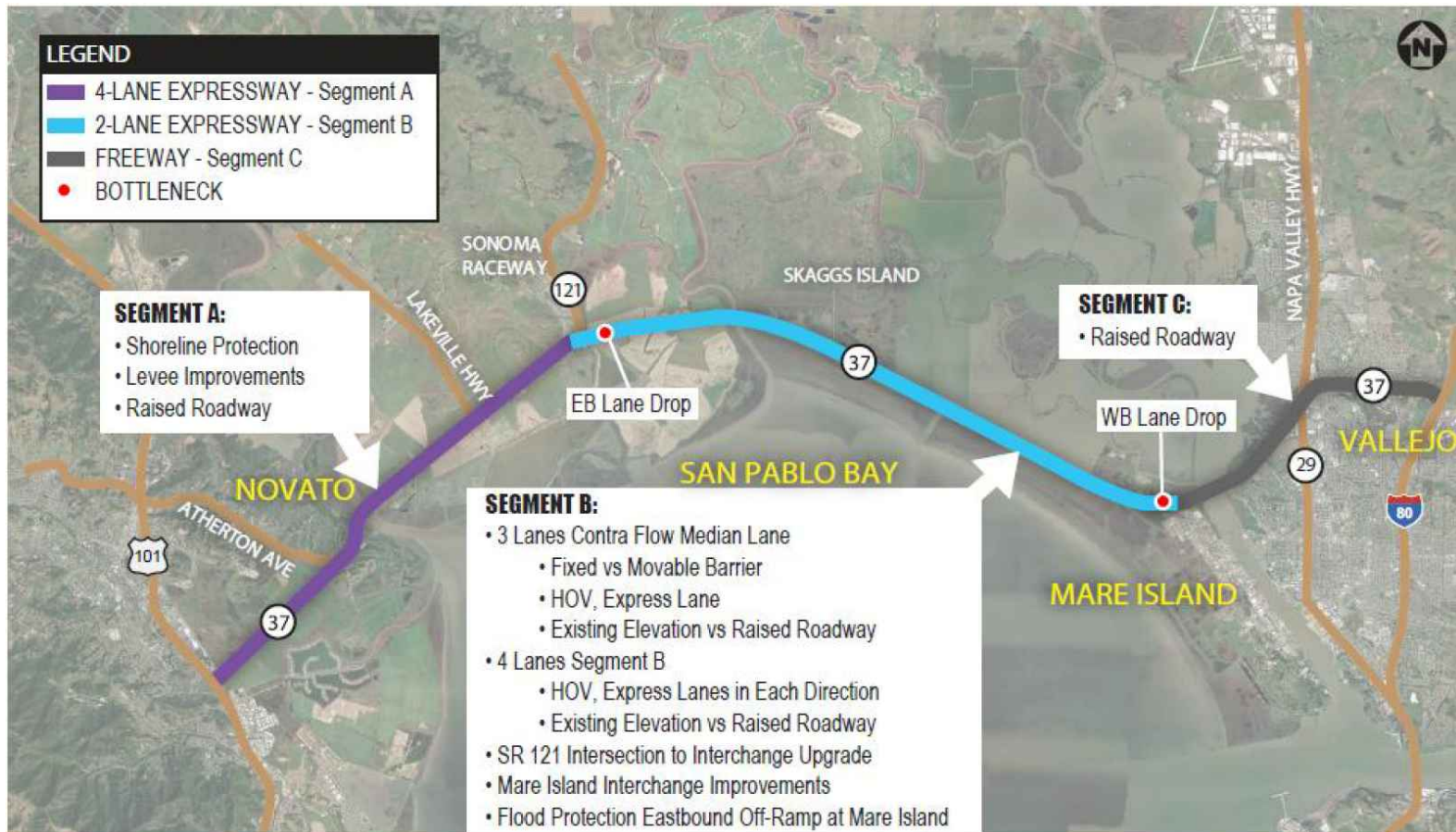
Segment B (Hwy 121 to Mare Island) is the Priority Segment



Segment Risk Rating	Segment A	Segment B	Segment C
Effect on Existing Traffic Congestion	1	3	1
Effects on Environmental Resources	2	3	1
Impacts Due to Sea Level Rise	3	3	1
Economic Impact on Commuters	3	3	3
Economic Impact on Goods Movement	2	3	3
Impacts to Recreational Activities	2	3	2
Length of Segment Impacted/Capital Improvement Cost	3	3	1
Composite Risk Rating	2	3	2

Note: Risk ratings were assigned as follows: 1.0 - 1.4 (low), 1.5 - 2.4 (moderate), and a 2.5 - 3.0 (high)

Segment B: PSR and Environmental Clearance for Interim and Ultimate Projects

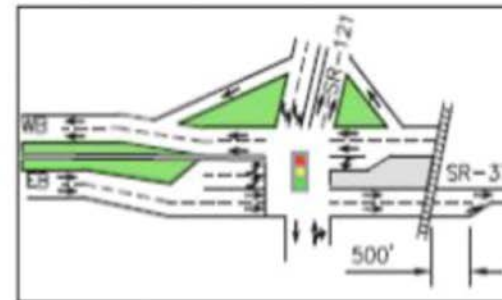


SR-37 Policy Committee Adopted Funding Plan

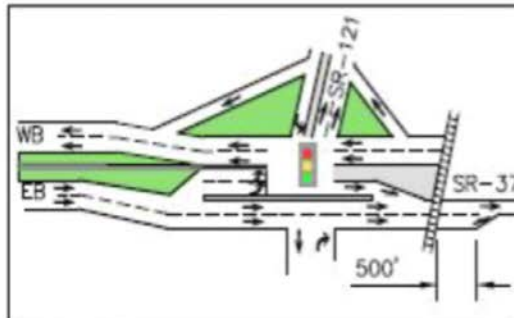
<u>SPONSOR</u>	<u>AMOUNT</u>	<u>DESCRIPTION</u>
STA	\$15 M	Segment C - Fairgrounds Interchange
SCTA	\$20 M	Interim Segment B - PAED and PS&E
SCTA	\$4 M	PAED for Highway 37/121 Improvements
TAM	\$3M	Segments A1 & A2 Levee Study
SCTA/TAM	\$58M	Segment A & B improvements

SR 37/121 – Highway Operational Improvement Options

- Signal optimization and roadway widening
- Continuous T intersection
- Roundabout with two EB by-pass lanes



Signal Optimization



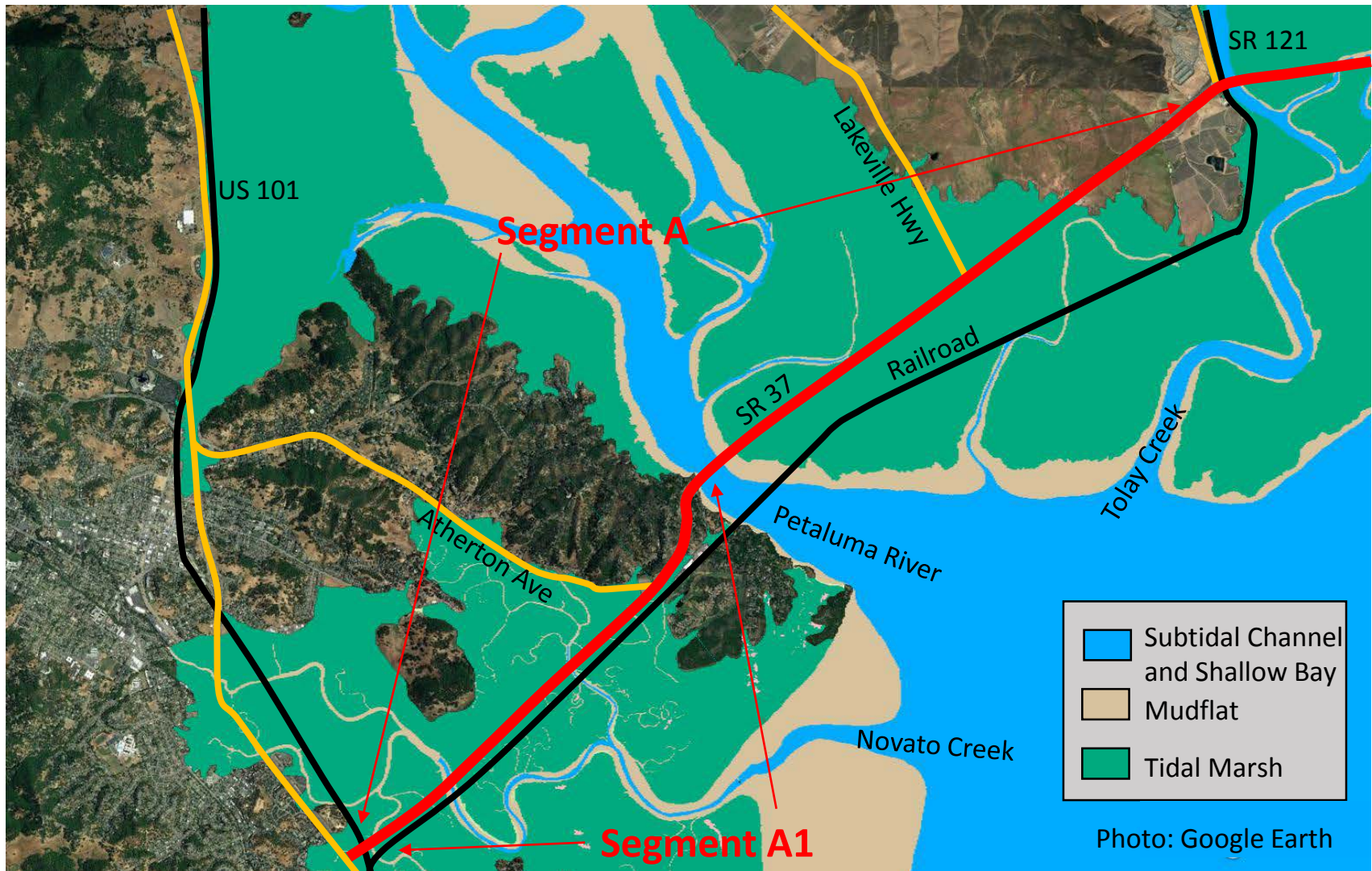
Continuous T Intersection



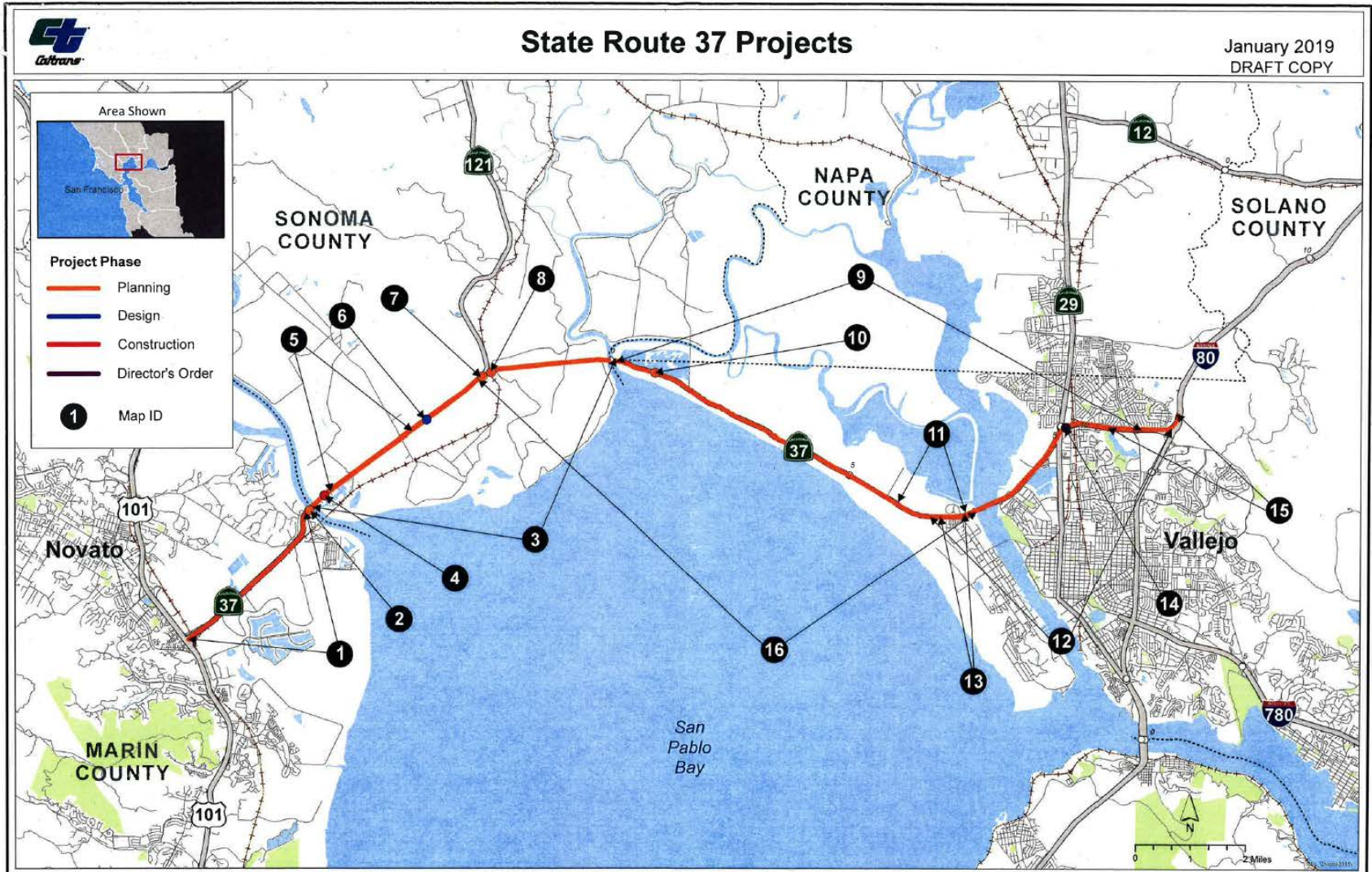
Roundabout Intersection

Segment A: Levee and Roadway Study to be led by TAM

Marin County DPW is leading off with Segment A1



Caltrans SR 37 10-Year SHOPP List



Caltrans SR 37 10-Year SHOPP List

SR 37 Projects

January 2019
Copy

Map ID	SHOPP Tool ID	EA	CO	PM	Descriptions	Activity Category	Phase	Status of PID	Projected RTL FY	Estimated Capital Cost
1	13658	2K740	MRN	11.2/14.6	Pavement from Route 101 to Sonoma County Line	Pavement (2017 TYP)	Planning	Post-PIR Not yet Programmed	2022/23	\$ 18M
2	20749		MRN	14.5/15.0	Resurface deck and replace fender system at Petaluma River Bridge.	Bridge (2017 TYP)	Planning	Pre-Programming	2023/24	\$ 12M
3	13669		SON	0/6.245	Pavement from Marin County Line to Solano County Line	Pavement (2017 TYP)	Planning	Pre-PIR	2024/25	\$ 14M
4	21027	2J500	SON	0.3	Reconstruct embankment with lightweight fill at the Petaluma River Bridge.	Major Damage (2017 TYP)	Construction		2017/18	\$ 1.5M
5	20142		SON	0.4/2.3	Drainage Improvements from Railroad Avenue to Lakeville Road	Drainage (2017 TYP)	Planning	Pre-PIR	2025/26	\$ 0.6M
6	11335	1A210	SON	2.62	Install Weigh-In-Motion at Sonoma Station just west of Route 121.	Mobility (2017 TYP)	Design		2018/19	\$ 2.6M
7	20581	1Q480	SON	3.78/4.00	Reconstruct intersection of SR 37 and SR 121.	Mobility (2017 TYP)	Planning	Pre-Programming	2025/26	\$ 30M
8	20471	2Q200	SON	3.92/4.12	Extend 2 lane section on eastbound SR 37 and improvement railroad crossing.	Mobility (2017 TYP)	Planning	Pre-Programming	2023/24	\$ 7.0M
9	11302	1Q400	SOL	0.0/11.2	Pavement from Sonoma /Solano County Line to Sage Street Undercrossing	Pavement (2017 TYP)	Planning	Pre-PIR	2024/25	\$ 8.2M
10	17969	0P760	SOL	VAR	Install Rectangular Rapid Flashing Beacons on Route 37, 80 & 780 at various location.	Safety (2017 TYP)	Planning	Pre-Programming	2022/23	\$ 1.1M
11	20603		SOL	6.0/7.3	Raise highway from 1.3 miles west of Railroad Avenue to Railroad Avenue.	Major Damage (2017 TYP)	Planning	Pre-PIR	2026/27	\$ 25M
12	20899		SOL	6.7/11.73	Install Ramp Metering on westbound SR 37 from Walnut Avenue Interchange to Route 80 . Install TOS on westbound/eastbound SR 37.	Mobility (2017 TYP)	Planning	Pre-PIR	2024/25	\$ 36M
13	20520		SOL	R6.85/R7.31	Improve westbound SR 37 lane merge near SR 37 /Walnut Avenue Interchange.	Mobility (2017 TYP)	Planning	Pre-PIR	2024/25	\$ 5.0M
14	21055	0P330	SOL	9.8	Reconstruct joint seals and bearing pads at the Route 29 separation and at Ulatis Creek.	Major Damage (2017 TYP)	Director's Order		2017/18	\$ 0.7M
15	20392		SOL	10.5/12.0	Replace Box Beam Structures from Fairgrounds Drive to Columbus Parkway.	Other (2017 TYP)	Planning	Pre-PIR	2025/26	\$ 2.7M
16	LOCAL	1Q760	SON/SOL	3.76/R6.24; R0.0/R7.38	Traffic Operations and Sea Level Rise Improvements from SR 121/SR 37 Junction to the Mare Island Interchange.		Planning	Pre-Programming		Interim: \$ 85M ~ \$125M Ultimate: \$ 3.0B ~ \$3.9B

