

State Route 37 Town Hall

September 26, 2019

6:30 PM





Presentation Outline

SR 37 Novato to Black Point

- 1. Completed Improvements**
- 2. Near term Improvements
(before Winter 2019/20)**
- 3. Segment A1 Improvements**

SR 37 Existing Corridor



Completed Improvements

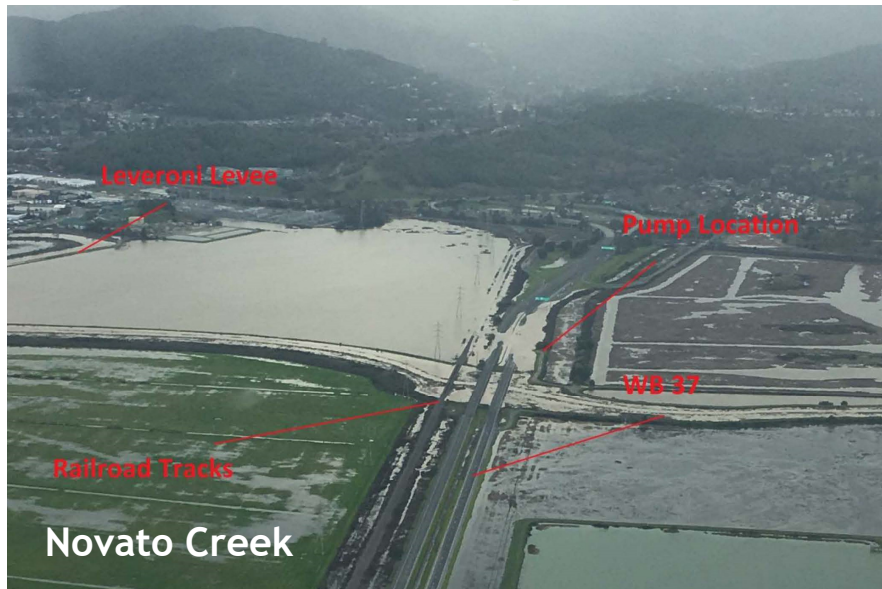
Spring 2017 - Opened to Traffic in 14 days

- ▶ Raised pavement 1.5 to 2 feet for 1200 feet in both directions west of Novato Creek
- ▶ Constructed 1500 feet concrete barrier flood wall along eastbound shoulder
- ▶ Added drainage improvements
- ▶ Restored levee in 2 locations within State right of way

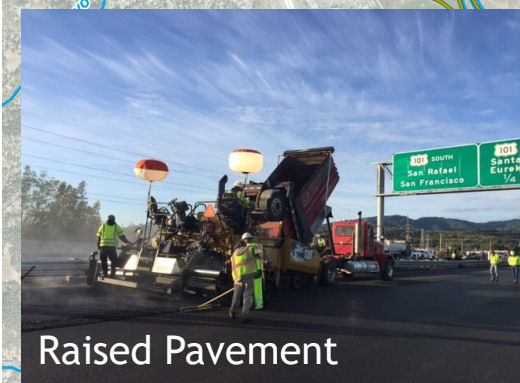
Spring 2019 - Opened to Traffic in 5 days

- ▶ Constructed temporary concrete and soil dam to pump water out
- ▶ Paved low spots in westbound roadway up to 8 inches for 3200 feet east of Novato Creek

2017 Flooding caused by Levee Failure



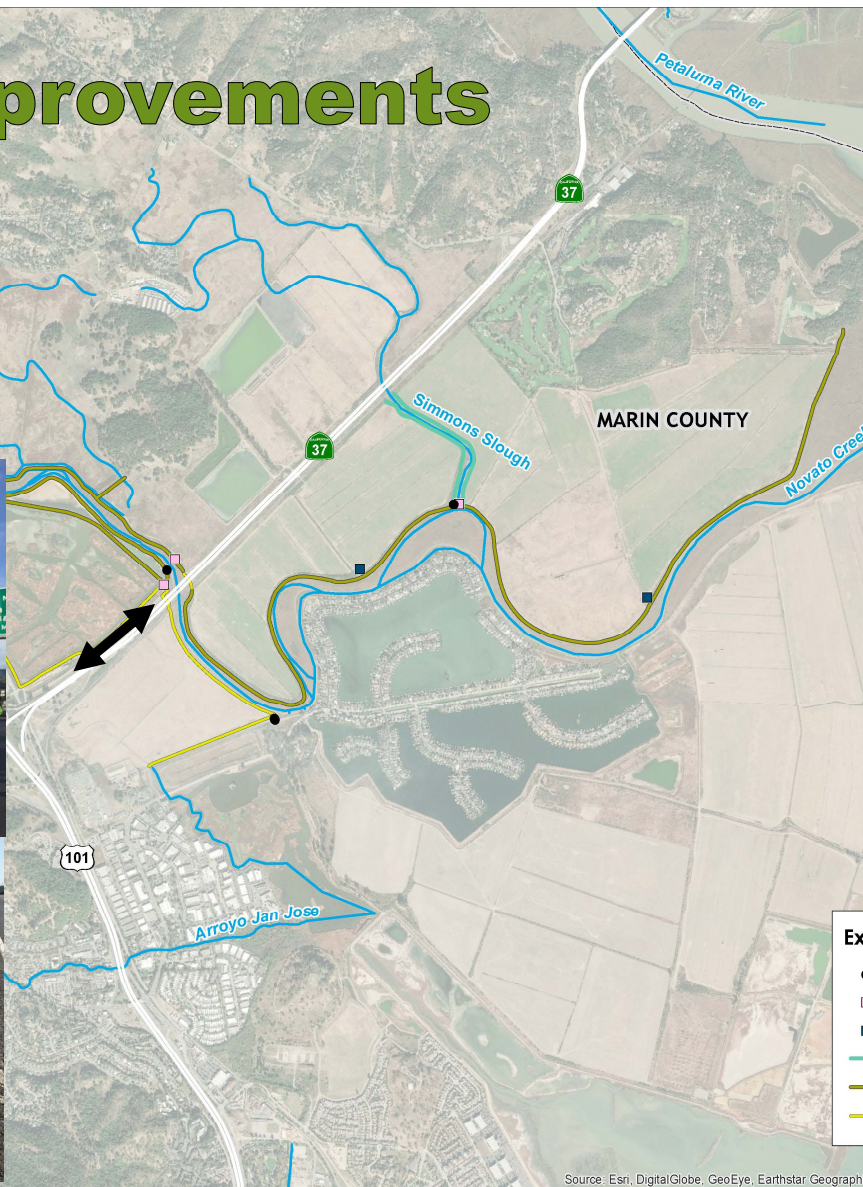
Completed Improvements 2017 Spring



Raised Pavement



Restored Levee



Construct Floodwalls

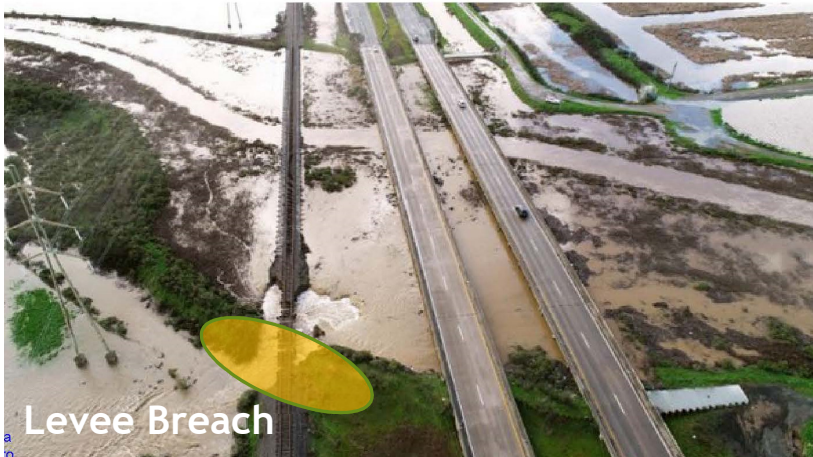


Added
Drainage Improvements

Existing Marin County Flood Control Features

- Tidegate
- Pump Station, District-Owned
- Pump Station, NSD-Owned
- Berm
- Levee, District-Managed
- Levee, Non FC

2019 Flooding caused by Levee Failure

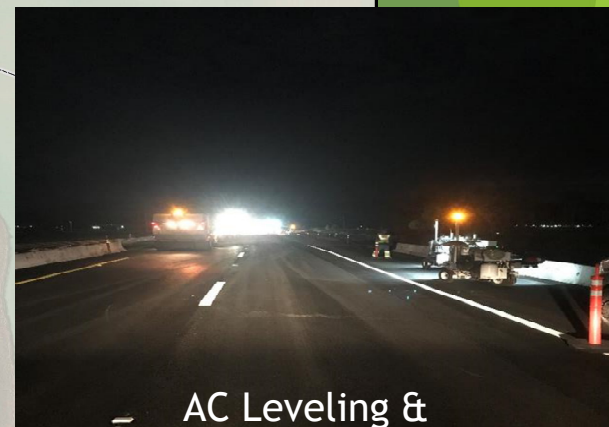
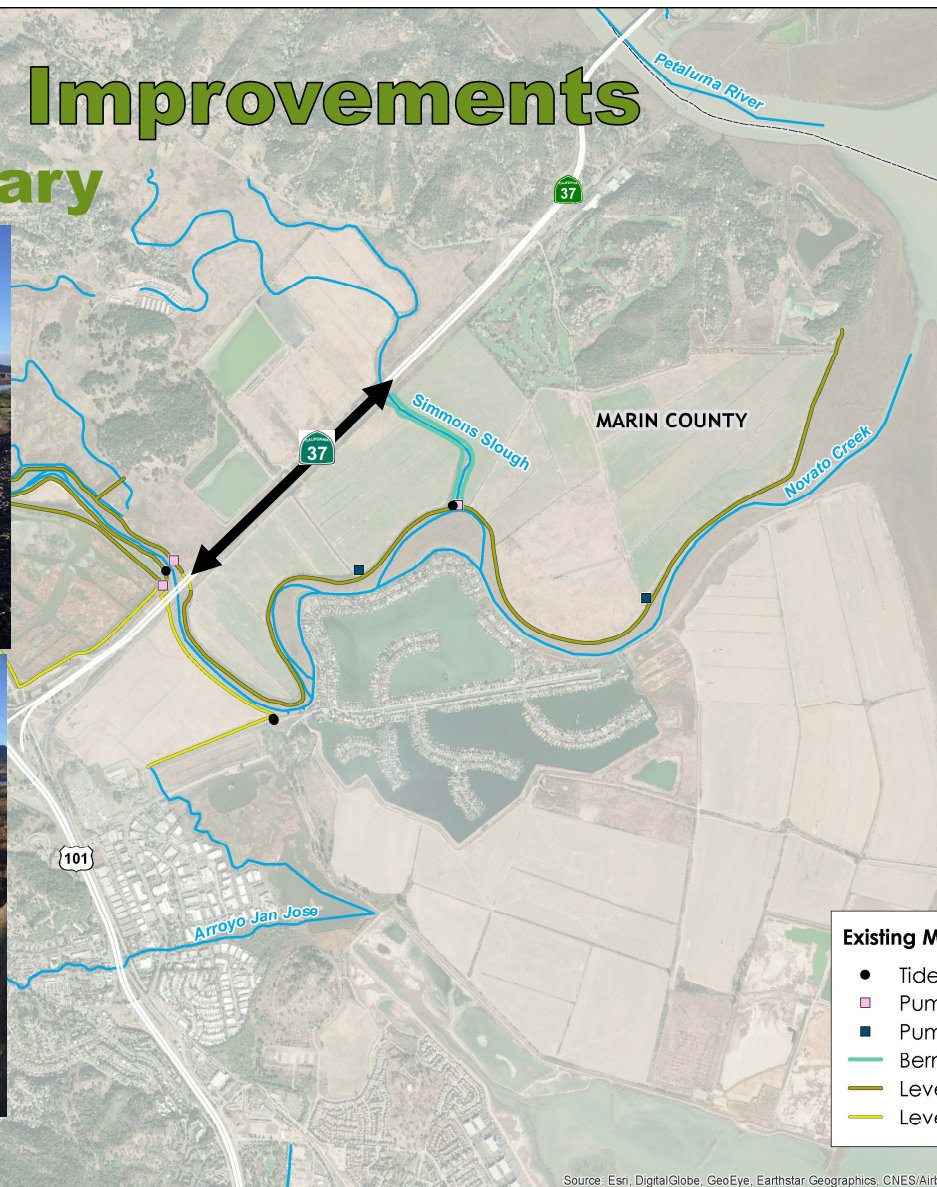


Completed Improvements

2019 February



Access Road &
Levee Repair By others



AC Leveling &
Temporary Floodwall



Near term improvements

Complete by December 2019

- ▶ Install additional drainage improvements
- ▶ Raise westbound pavement up to 1 foot for 3500 feet east of Novato Creek Bridge
- ▶ Install temporary floodwall (rubber bladder) on eastbound 37 at the Marsh Drive on-ramp
- ▶ Deploy tractor based pump

Near term improvements

Before Winter 2019/20 Planned Construction

Raise Westbound pavement up to 1 foot

Install Drainage Improvements

Existing Marin County Flood Control Features

- Tidegate
- Pump Station, District-Owned
- Pump Station, NSD-Owned
- Berm
- Levee, District-Managed
- Levee, Non FC

Caltrans D4
Office of System & Regional Planning
GIS Branch

Source: Esri, DigitalGlobe, GeoEye, Earthstar Geographics, CNES/Airbus DS, USDA, USGS, AeroGRID, IGN, and the GIS User Community
Rte37_MRN_Flood_Prevention_Existing_20190917

Near term improvements

Before Winter 2019/20 Planned Maintenance Efforts



Segment A1 Improvements

- ▶ Project Initiation Report (PIR) was approved May 2019 to address flooding and projected Sea Level Rise
- ▶ \$10 million programmed to fund environmental studies and project approval
- ▶ Interim Improvements
 - ▶ Roadway & Bank Protection and Drainage Improvement
 - ▶ Raising Pavement Elevation
 - ▶ Environmental approval expected early 2023
- ▶ Ultimate Improvements (Projected Sea Level Rise Year 2100)
 - ▶ Two viable alternatives are being considered
 - ▶ Both alternatives raise elevation of highway to address projected Sea Level Rise

Segment A1 Interim Improvements

Example Strategies

Roadway & Bank Protection



Drainage Improvement



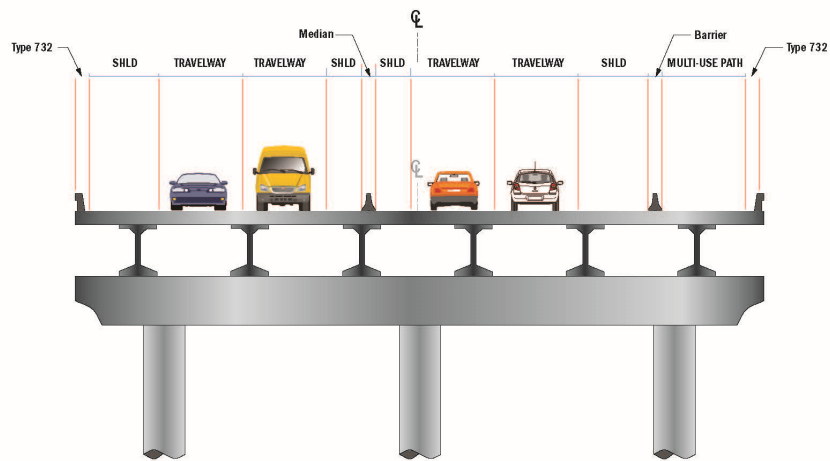
Raising Pavement Elevation



Segment A1 Ultimate Improvements

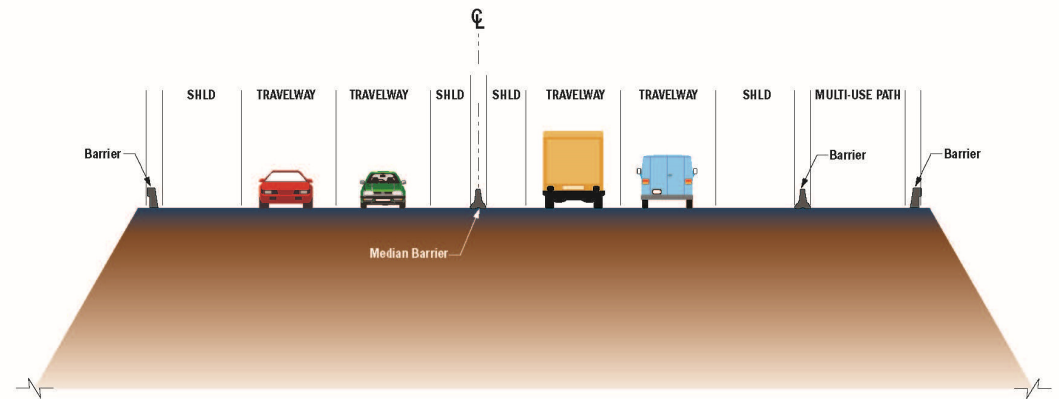
Two Viable Alternatives

ALTERNATIVE A1: TYPICAL CAUSEWAY SECTION



MRN - 37

ALTERNATIVE A2: TYPICAL EMBANKMENT SECTION



MRN - 37

End of the Presentation

