

STATE ROUTE 37 RESILIENT CORRIDOR PROGRAM

*Integrating transportation, ecology, and
sea level rise adaptation into a more resilient SR 37*



September 26, 2019

Image: San Pablo Bay National Wildlife Refuge, USFWS

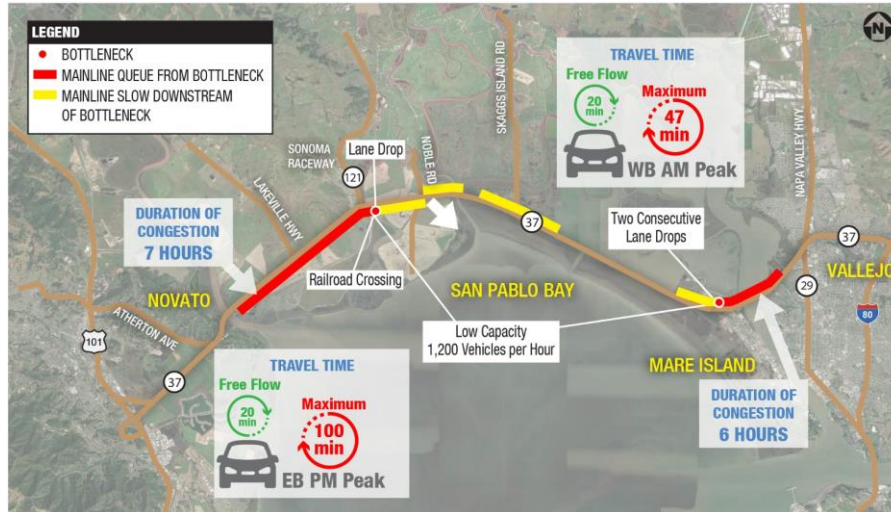


RESILIENTSR37

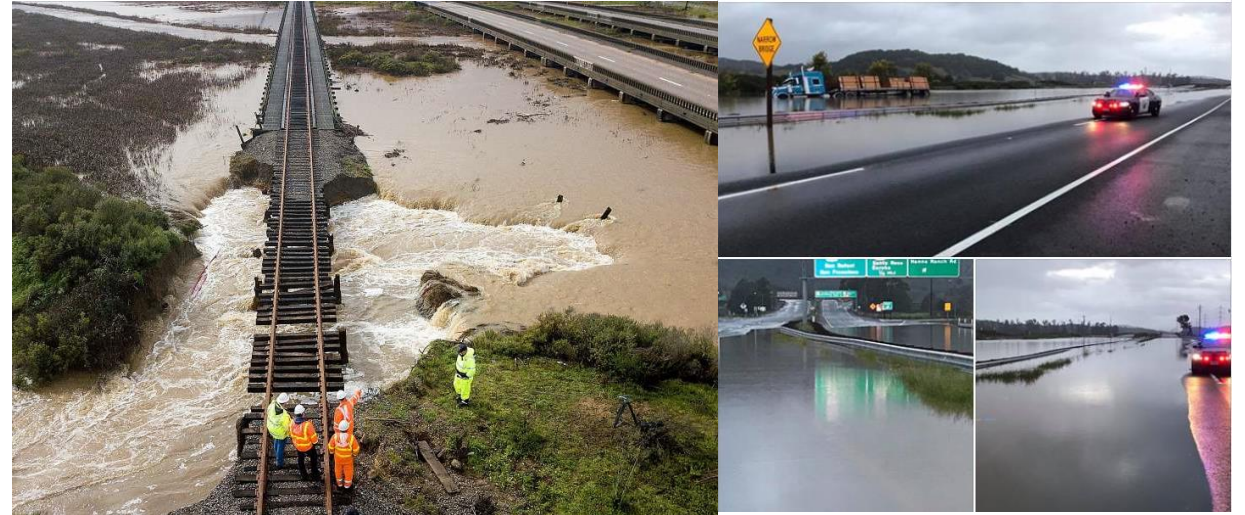
RIISING TO THE CHALLENGE



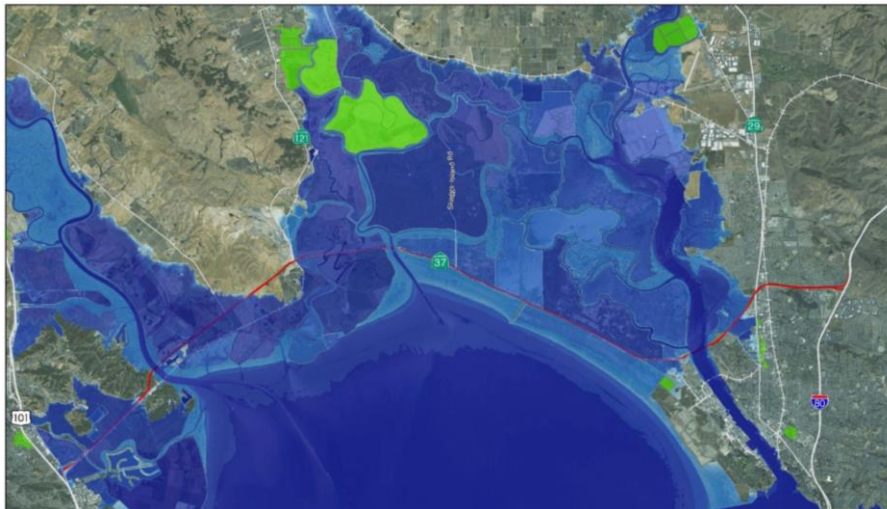
Congestion



Flooding



Sea Level Rise

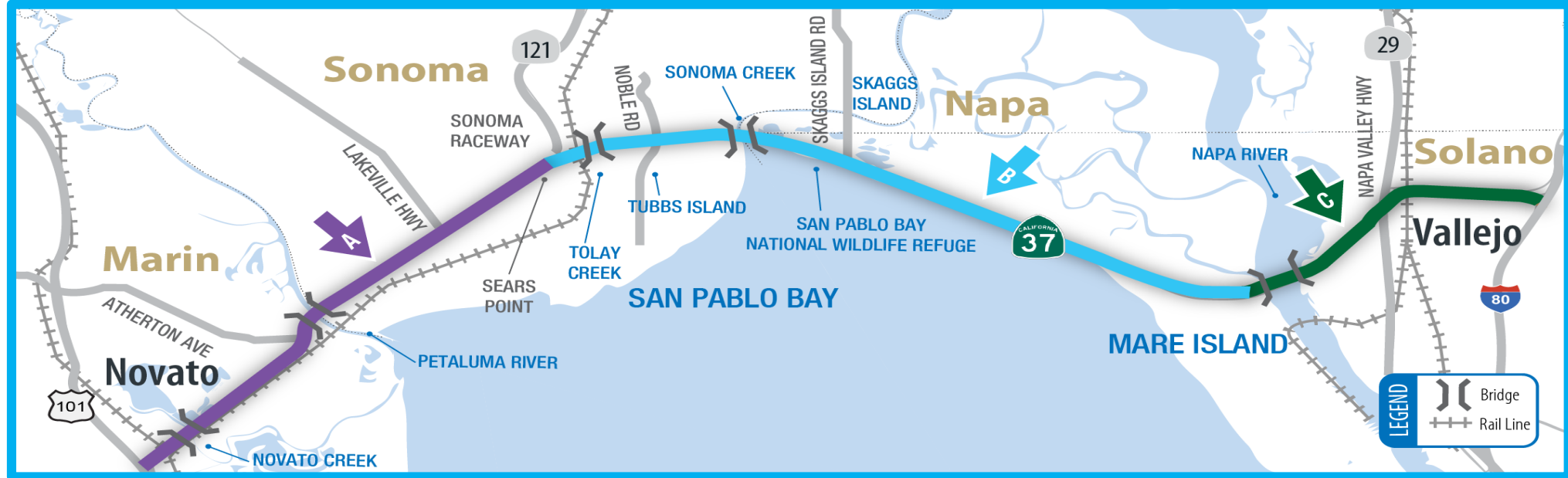


Ecology



RESILIENTSR37

OUR VISION → MULTI-MODAL AND MULTI-BENEFIT PROJECTS



Sea Level
Rise



Ecological
Restoration &
Conservation



Multimodal
Corridor



Access to
Baylands



Equity

RESILIENTSR37



BREAK THE PROJECT DELIVERY PARADIGM



Design Alternative Assessments



Interim and Ultimate Fixes



Integrate,
Don't Mitigate



Early Outreach



RESILIENTSR37

INTERIM CONGESTION RELIEF PROJECT: SR 121 TO MARE ISLAND



Existing 2-Lane Segment B

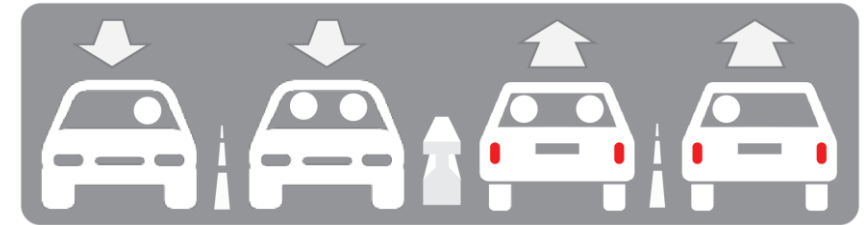


Option 1: 3-Lane Contra-Flow
with Moveable Median Barriers



Golden Gate Bridge Example

Option 2: 4-Lane Highway
(requires mitigation for bike access)



Richmond-San Rafael Bridge Example

Cost Range: \$100M to \$150M

Status: Environmental Review Underway

RESILIENTSR37

8TH TOLL BRIDGE



SR 37: Sears Point - Mare Island

RESILIENTSR37

RESILIENT SR 37 PROGRAM — PHASED IMPLEMENTATION

CONCURRENT PROJECT DEVELOPMENT. DELIVER EARLY COMMUNITY BENEFITS.



Environmental - Design - Construction

- Flood Protection Project (US 101 — Lakeville Hwy)
- Congestion Relief Project (SR 121 — Mare Island)
- Early Ecological Enhancements
- Transit With Emerging Technology

Early Benefits



Transition

- SR 37 Corridor SLR Adaptation Project (I-80 — US 101)
- Bike/Pedestrian/Public Access
- Transit With Tomorrow's Technology

RESILIENTSR37



Today

2025

2040

2050

RESILIENTSR37