



Improvements to the Approaches to the Richmond San Rafael Bridge

November 21, 2019

Access Routes to the Richmond San Rafael Bridge



Two Marin Connector Route Options



Exit US-101 at East Sir Francis Drake Boulevard

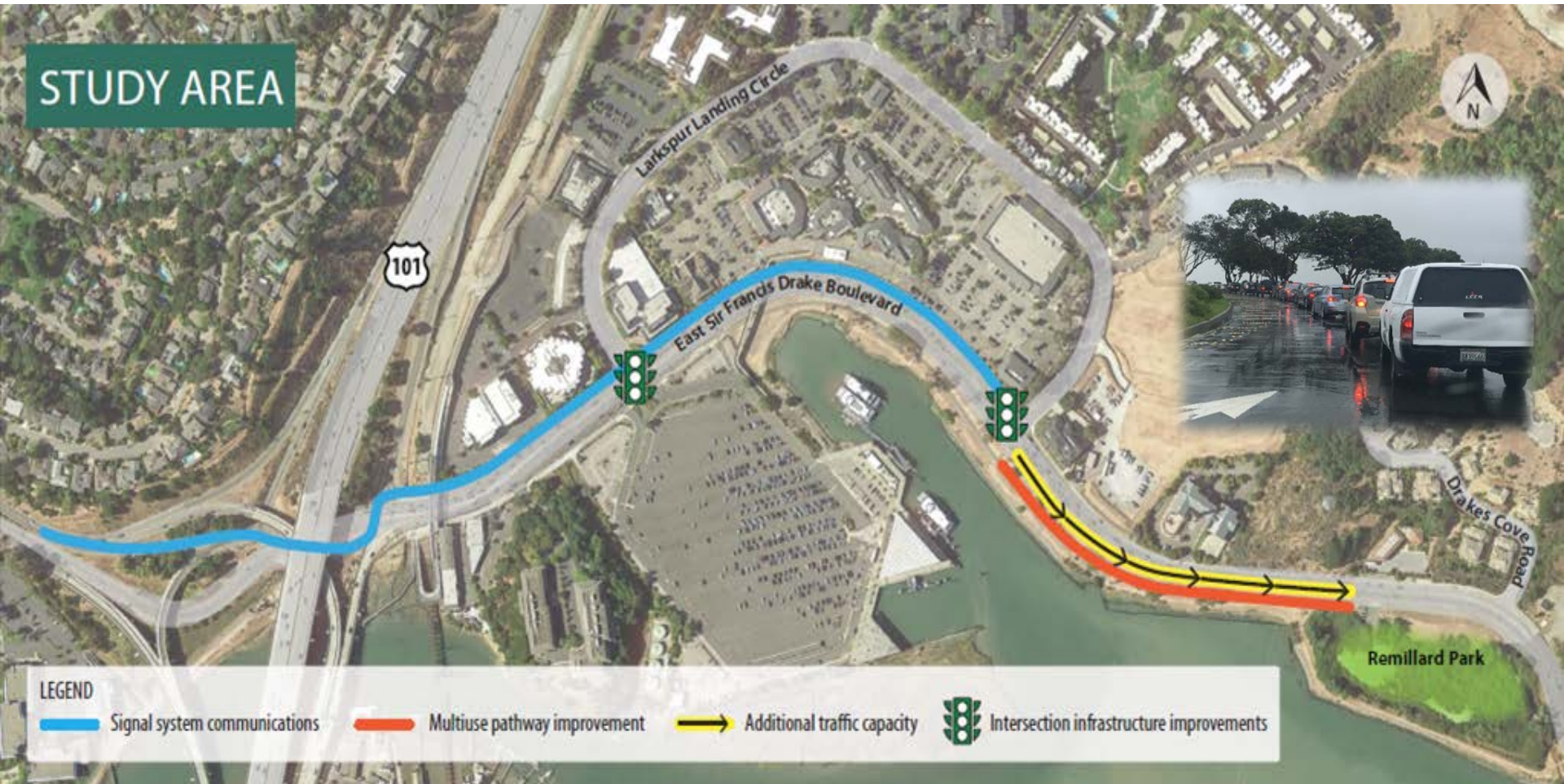


Exit US-101 at Bellam Boulevard

Bellam Boulevard



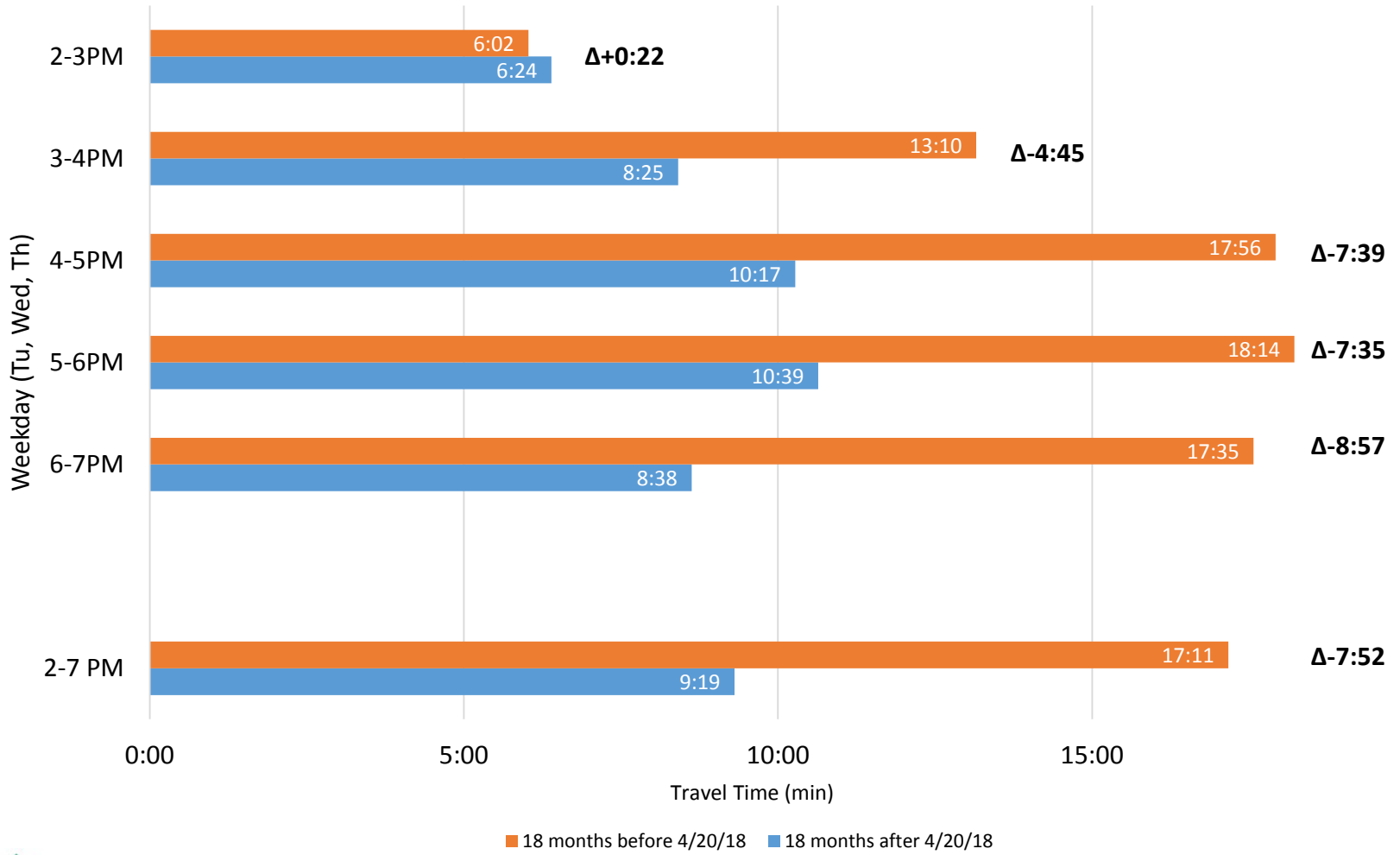
East Sir Francis Drake Blvd Traffic Improvements (Highway 101 to Drakes Cove)



Travel Time: Tamalpais Interchange to I-580 On-Ramp



Travel Time: Tamalpais Interchange to I-580 On-Ramp



Proposed Bicycle Access Improvements

- Add Barrier Separated Two-Way Bike Path on the SFD Westbound Overcrossing from the Francisco Boulevard East Access Point to the Andersen Drive Intersection.
- Class IV Bikeway, No Pedestrian Facilities
- Two Year Pilot Program

Add Concrete Barrier on the SFD Off-Ramp to Create a Class IV Bikeway



Add Concrete Barrier on the SFD Off-Ramp to Create a Class IV Bikeway



EXISTING PEDESTRIAN AND BICYCLE ROUTES IN THE VICINITY OF THE RICHMOND SAN RAFAEL BRIDGE





Item 9 - SUPPLEMENTAL



Questions

