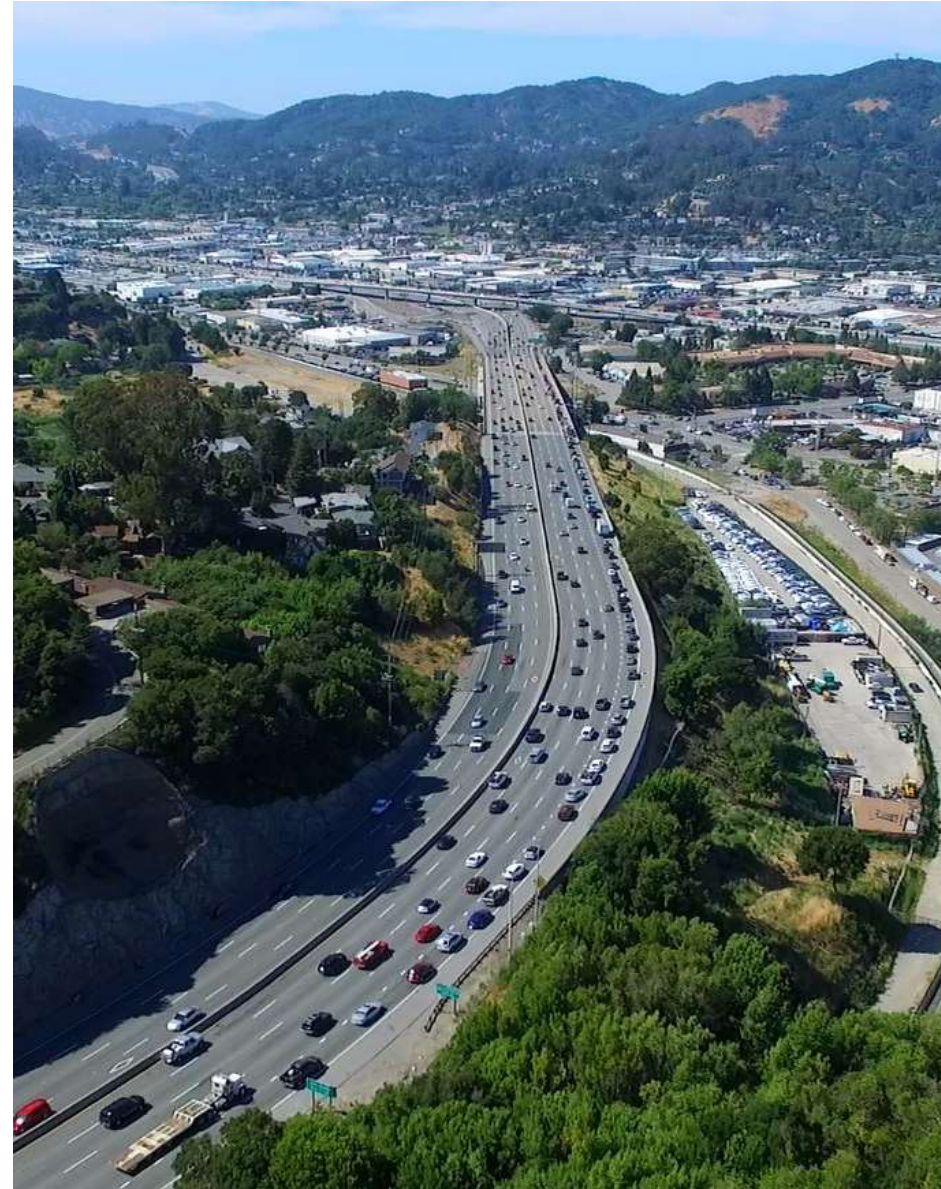




Northbound US-101 to Eastbound I-580 Direct Connector

Stakeholder Working Group #6
May 18, 2021



ZOOM Protocols & Meeting Guidelines

Zoom Meeting Protocols

- Everyone will be put on **Mute** to reduce background sounds. Meeting Host will unmute you when it is your turn to speak.
- During Presentation
 - If you have **comments about the project**, please hold them until discussion or public comment.
 - We will pause for clarifying questions before the alternatives discussion.
- During Discussion
 - We will open it to general conversation whenever possible. Stakeholder Working Group members can **Raise Hand** to get in the queue.
- During Public Comment
 - Public participants can **Raise Hand** to provide comments.

Meeting Guidelines

- Please be concise, this is a challenging format for discussion
- Be honest and constructive, build on the ideas of others

Agenda for Today's Meeting

1. Overview of Today's Agenda and Goals
2. SWG Introductions
3. Recap of SWG #5 and Alternatives Update – Connie and Chadi
4. Alternatives Discussion – Charles, Connie and Chadi
 - Introduction and Discussion Approach
 - Alternatives Feedback and Discussion
5. Public Comment
6. Next Steps and Timeline

SWG Introductions

Stakeholder Working Group

DJ Allison	Bike & Pedestrian	San Rafael Bike/Ped Adv. Comm.
Michele Barni	Community	Pt. San Quentin Village HOA
Omar Carrera	Community	Canal Alliance
Julie Cervetto	Business	Larkspur Chamber of Commerce
Jim Draper, Richard Bernstein	Community	Fed. of San Rafael Neighborhoods
Air Gallegos	Commuter	East Bay to/from San Rafael
Kevin Hagerty	Community	League of Women Voters
Jon Horinek	Community	College of Marin
Linda Jackson	Environmental	Sustainable San Rafael
Wendi Kallins	Environmental	Sustainable Marin
Becky Kittredge	Commuter	East Bay to/from Larkspur
Douglas Mundo	Community	Multicultural Center of Marin
Dave Pedroli	Community	San Rafael City Schools
Stephanie Plante	Business	East San Rafael Businesses
Kate Powers	Environmental	Marin Conservation League
Jim Rosenfield, Libby Schenkel, Elaine Lin	Business	Country Mart, Larkspur Landing
Betsy Swenerton	Community	Bret Harte Community Assoc
Dave Troup	Transit Rider	Rides GGT through project area
Joanne Webster	Business	San Rafael Chamber of Commerce
Warren Wells, Tarrell Kullaway	Bike & Pedestrian	Marin County Bicycle Coalition

TAM 101-580 Team

Transportation Authority Marin

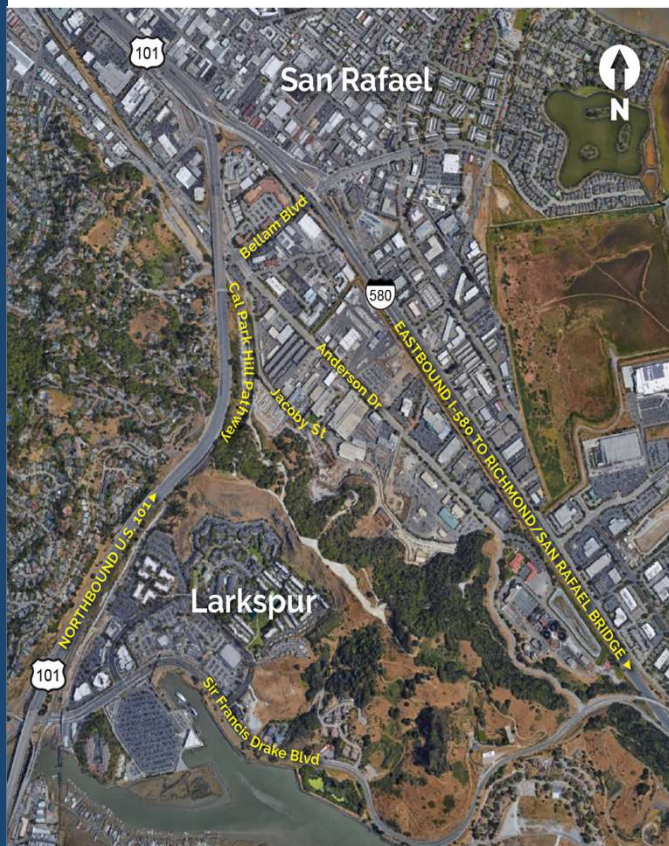
- Anne Richman, Executive Director
- Dan Cherrier, Principal Project Delivery Manager
- Connie Fremier, Project Manager
- Molly Graham, Public Outreach Coordinator

Consulting Team

- Chadi Chazbek, Project Manager, Kimley-Horn
- Sean Mayer, Deputy Project Manager, Kimley-Horn
- Charles Gardiner, Facilitator, Catalyst Group
- Linadria Porter, Outreach Manager, Catalyst Group

Recap & Alternatives Update

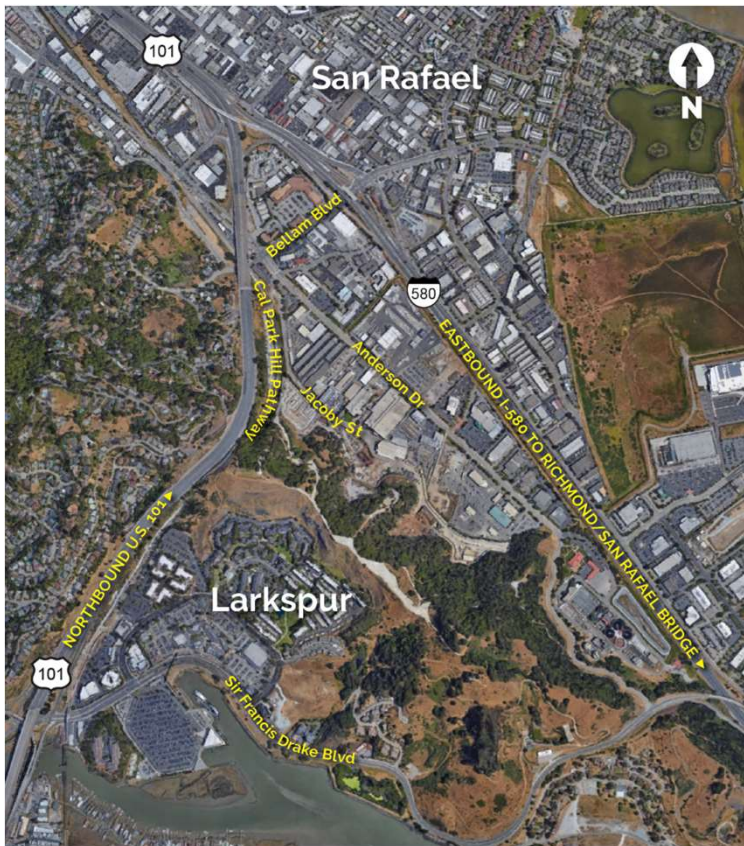
Proposed Project



- **Build a new freeway-to-freeway connection** from Northbound US 101 to eastbound I-580
- **Improve bicycle, pedestrian, and transit access** primarily along Bellam Blvd
- **Replace existing two-span EB 580 bridge** over Bellam with a single span bridge
- **Construct auxiliary lane on EB I-580** from the new connector to the Richmond-San Rafael Bridge

Marin NB 101 to EB 580 Direct Connector

Project Goals and Objectives



- Build a new freeway-to-freeway connection between NB US 101 and EB I-580 to improve connectivity and traffic flow for local and regional traffic
- Separate regional pass-through traffic from local traffic and reduce local traffic congestion
- Enhance bicycle and pedestrian network and local access within the project area
- Promote equity for all users, particularly members of the under-represented communities within the project area
- Project should not preclude construction of future WB 580 to SB 101 Connector

Alternatives Under Consideration



Local Project Improvements in San Rafael

Bellam Corridor

- Remove regional traffic from the Bellam off-ramp intersection
- Replace I-580 EB Bridge and create additional space for bike/ped improvements (\$11M)
- Bellam Boulevard improvements*
 - Implement safer and more accessible bike and pedestrian facilities along Bellam (\$7M)
 - Complete the bike and pedestrian connection to Cal Park Path
 - Evaluate improvements along Andersen north of Bellam to provide better access to Davidson MS and downtown San Rafael
 - Incorporate placemaking, arts, and beautification elements throughout the corridor as feasible
- Potentially replace I-580 WB SFD off-ramp exit bridge and make SFD/Andersen intersection safer for bike/ped access and improve intersection operation (\$19M)

*Designs to be developed with the community during the environmental phase

Consistency with Future Planning Efforts

- Direct Connector Project would not preclude future additional improvements along I-580 corridor
 - Project needs to be consistent with the RM 3 funding legislation and TAM's Measure AA voter-approved language
- Team will be coordinating with City of San Rafael on its Community Based Transportation Plan, which could evaluate additional circulation needs
- Priority Development Area planning may be funded in the future

Alternatives Handbook

Summarizes Alternatives and Available Comparison Information



- Existing Conditions
- Proposed Project
- Project Goals and Objectives
- Project Considerations
- Alternatives Under Consideration
 - Plans/Profiles
 - Renderings
- Alternatives Comparison Tables
- Project Timeline/Schedule

SWG Questions and Clarifications

Alternatives Discussion

SWG Member Discussion

Discussion Approach

- SWG priorities for the project
- SWG recommendations regarding alternatives to drop
- SWG input on pros and cons of each alternative

SWG Member Discussion

Question 1

What are your priorities for the project?

- SWG members will receive a survey link via chat
- Members of the public can email responses to Marin101-580@tam.ca.gov

Important Project Considerations

- Design speed
- Traffic & congestion
- Environmental impacts
 - Air quality & GHG emissions
 - Noise
 - Habitat and SF Bay
 - Visual impacts
- Equity
- Sea level rise considerations
- Costs and funding
- Property impacts
- Economic impacts & benefits
- Neighborhood connectivity
- Bike/pedestrian/transit access

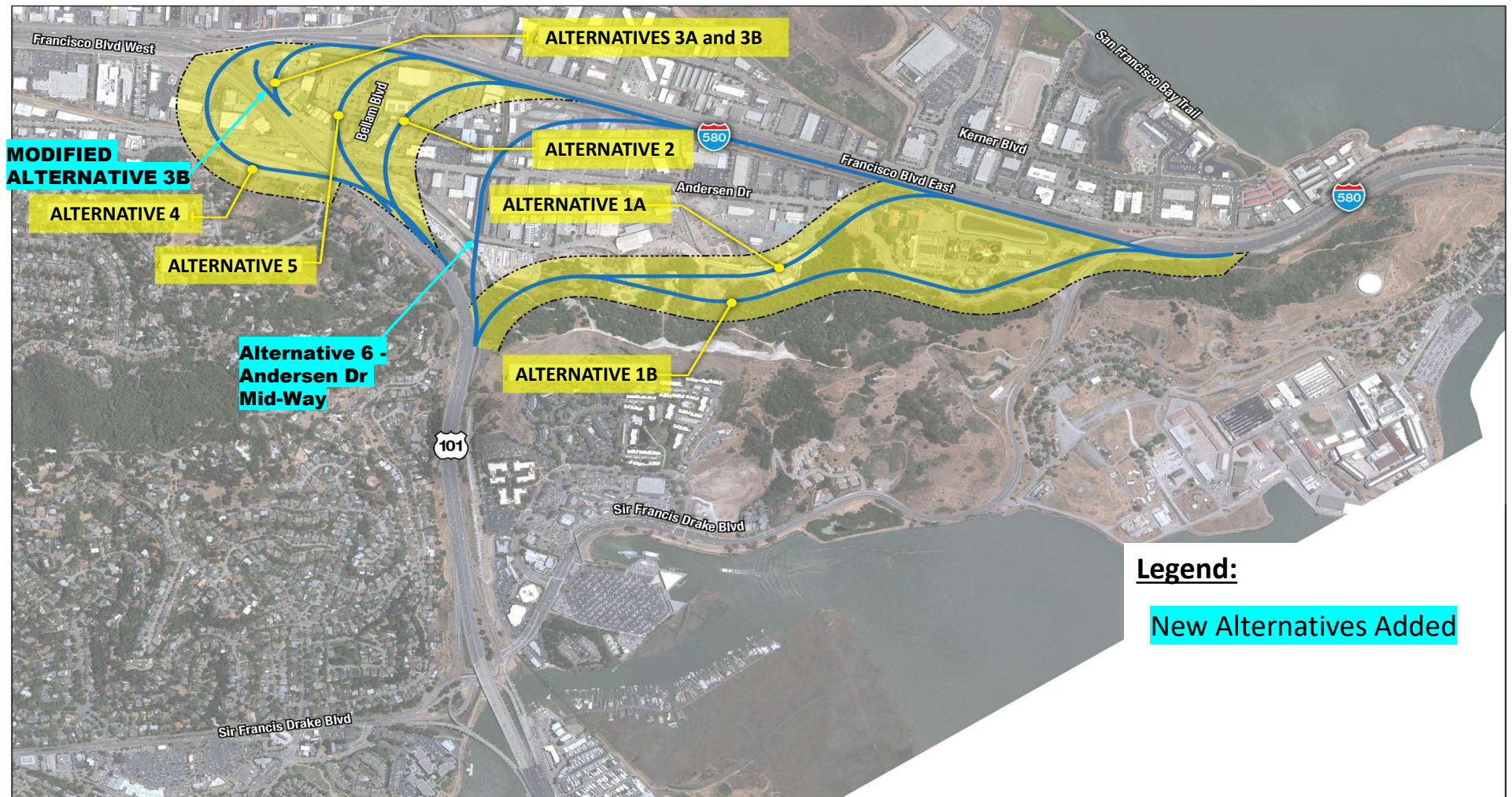
SWG Member Discussion

Question 2

Which alternatives do you recommend dropping from further consideration?

- SWG members will receive a survey link via chat
- Members of the public can email responses to Marin101-580@tam.ca.gov

Alternatives Under Consideration



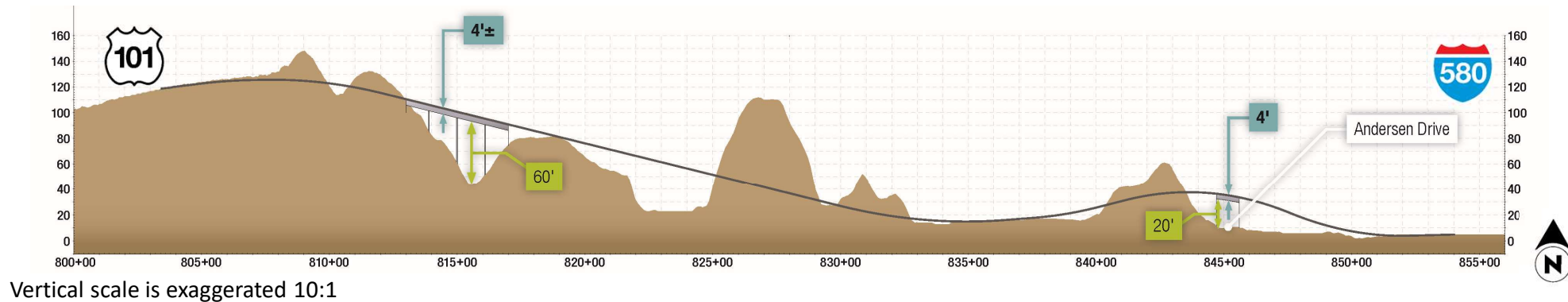
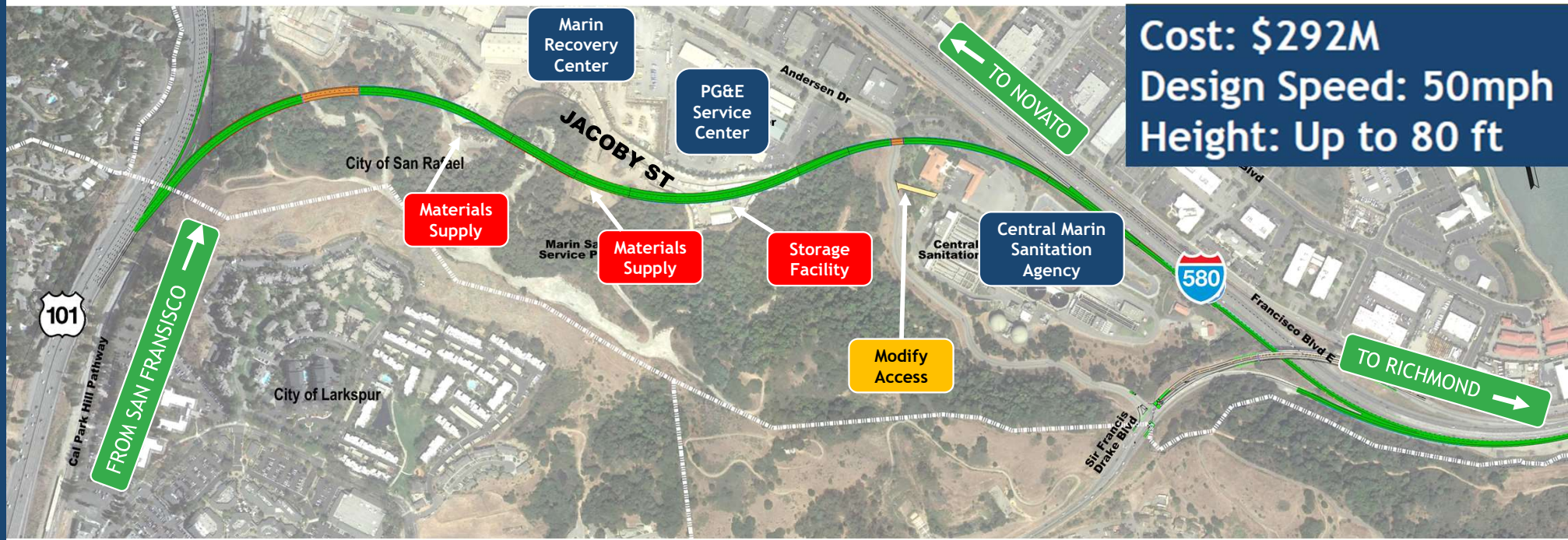
SWG Member Discussion

Question 3

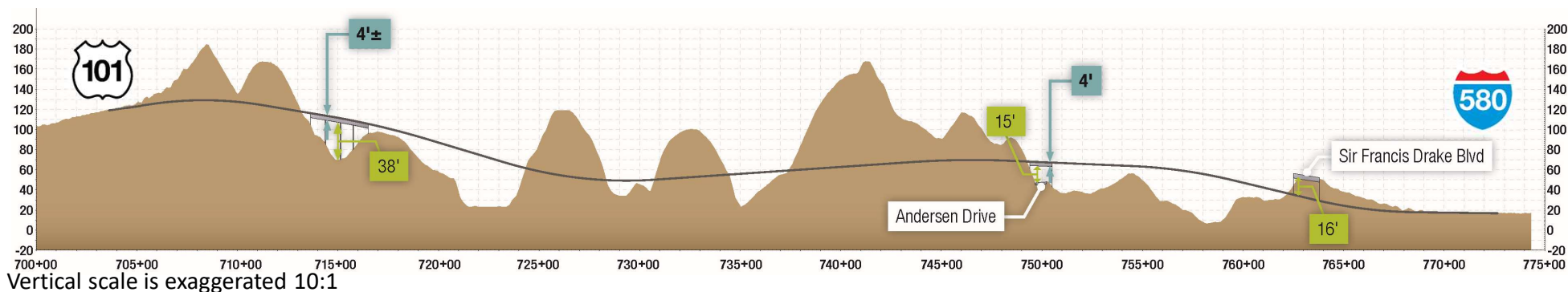
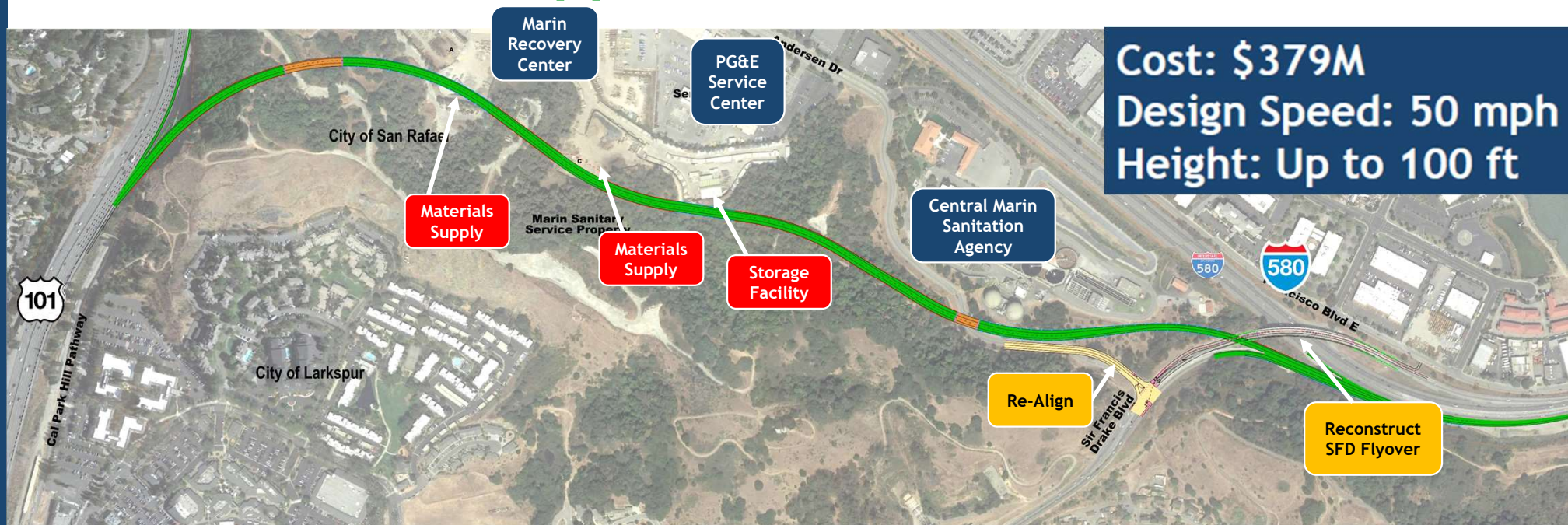
What are your reasons for dropping or keeping an alternative?

- SWG members will receive a survey link via chat
- Members of the public can email responses to Marin101-580@tam.ca.gov

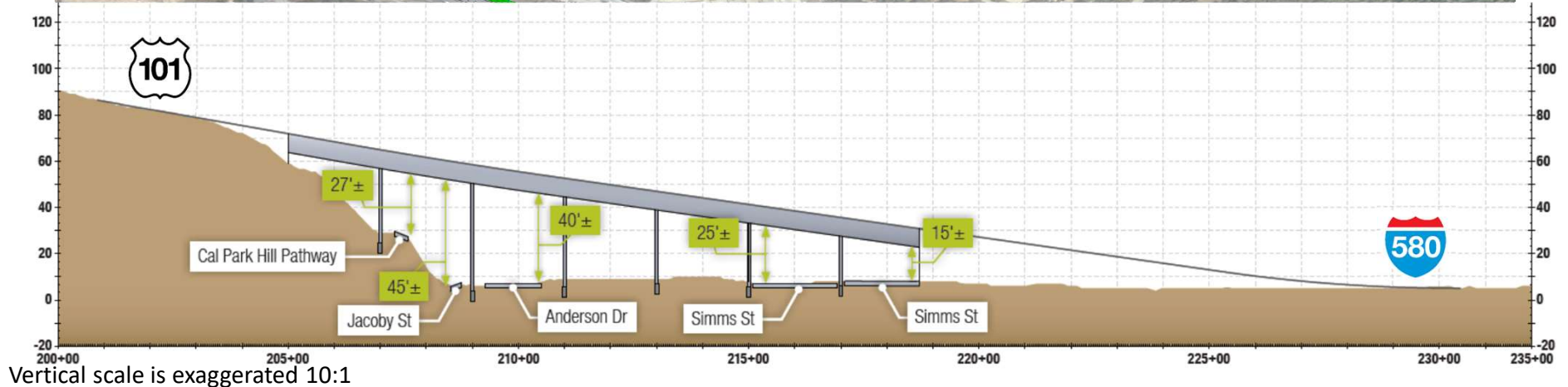
Alternative 1A - Lower Hillside



Alternative 1B - Upper Hillside



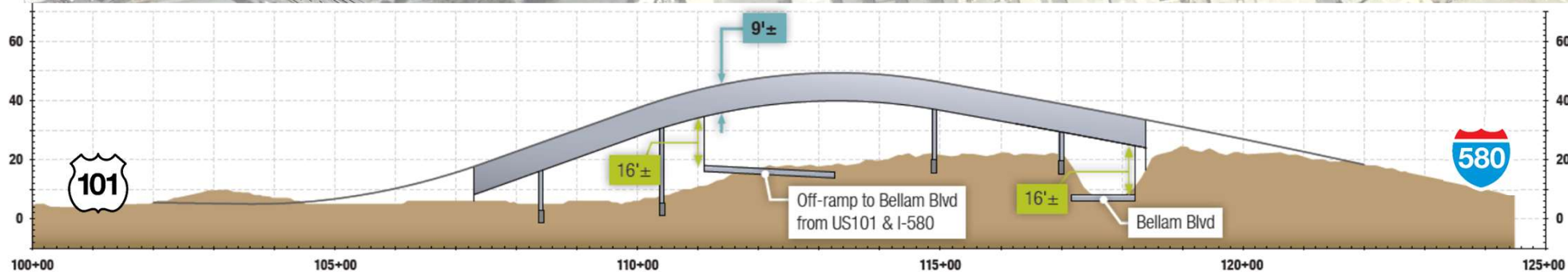
Alternative 2 - Simms St



Alternative 3A - Low Speed A

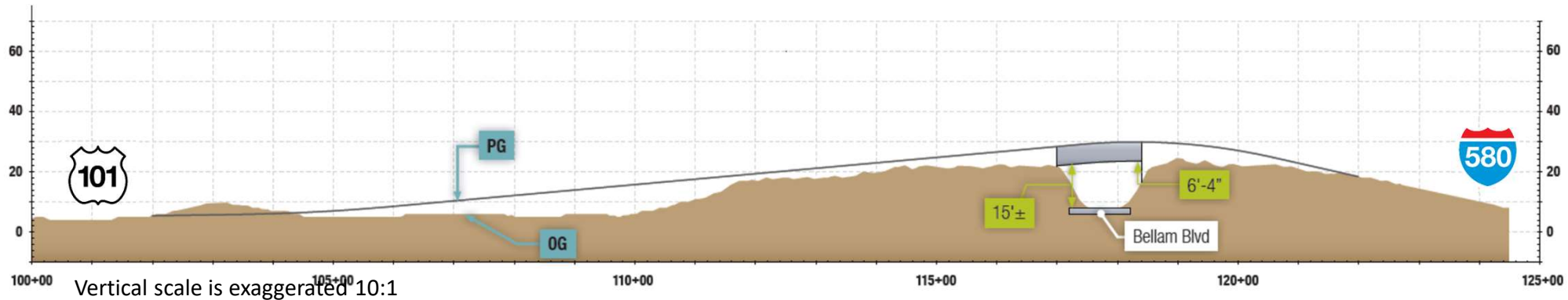


Cost: \$138M
Design Speed: 35 mph
Height: Up to 25 ft



Vertical scale is exaggerated 10:1

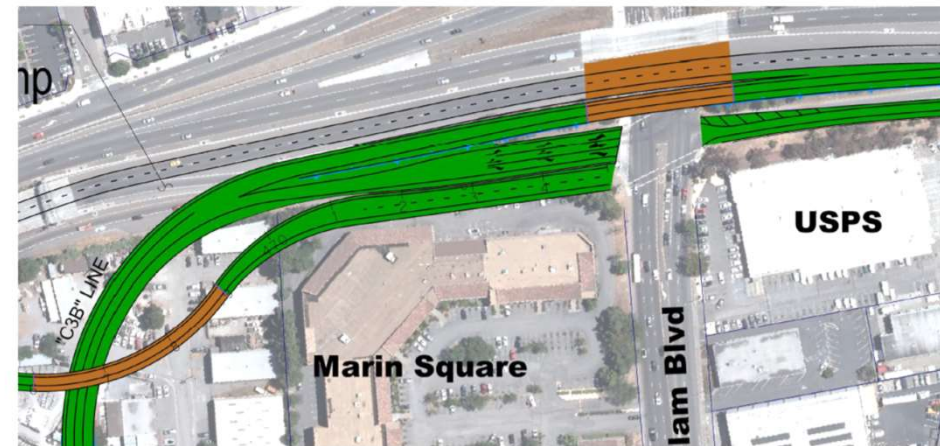
Alternative 3B - Low Speed B



Modified Alternative 3B with New Bellam Exit



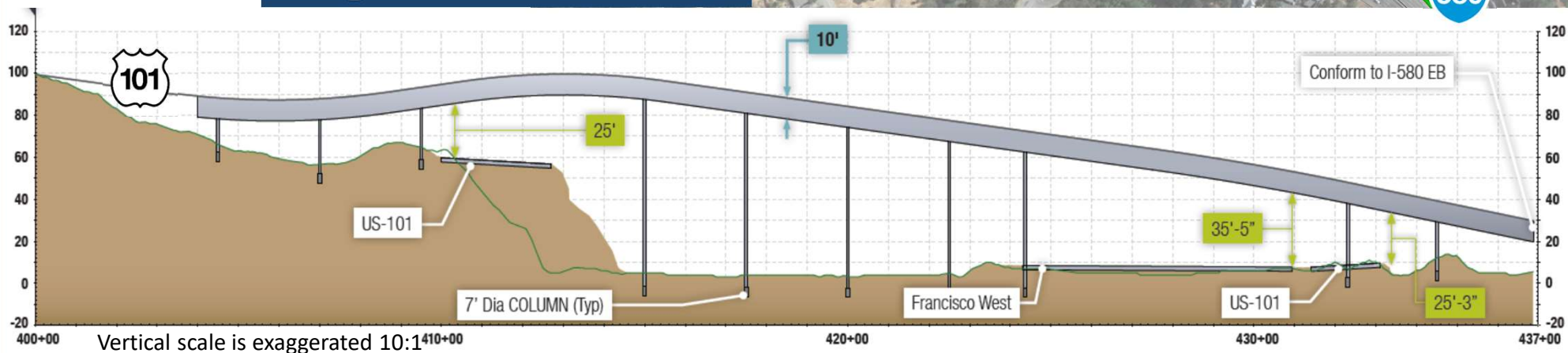
Cost: \$139M +
Design Speed: 35 mph
Height: Up to 22 ft



Alternative 4 Swing Out

Bellam
traffic exits
here

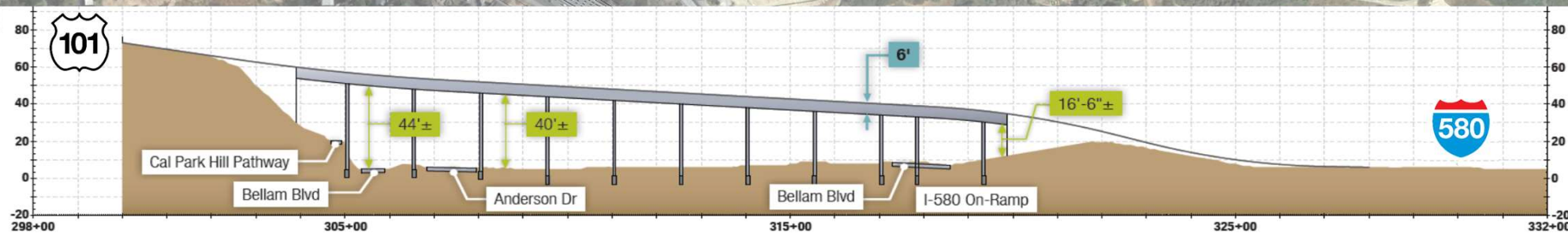
Cost: \$225M
Design Speed: 35 mph
Height: 90 to 100 ft



Alternative 5 - Marin Square

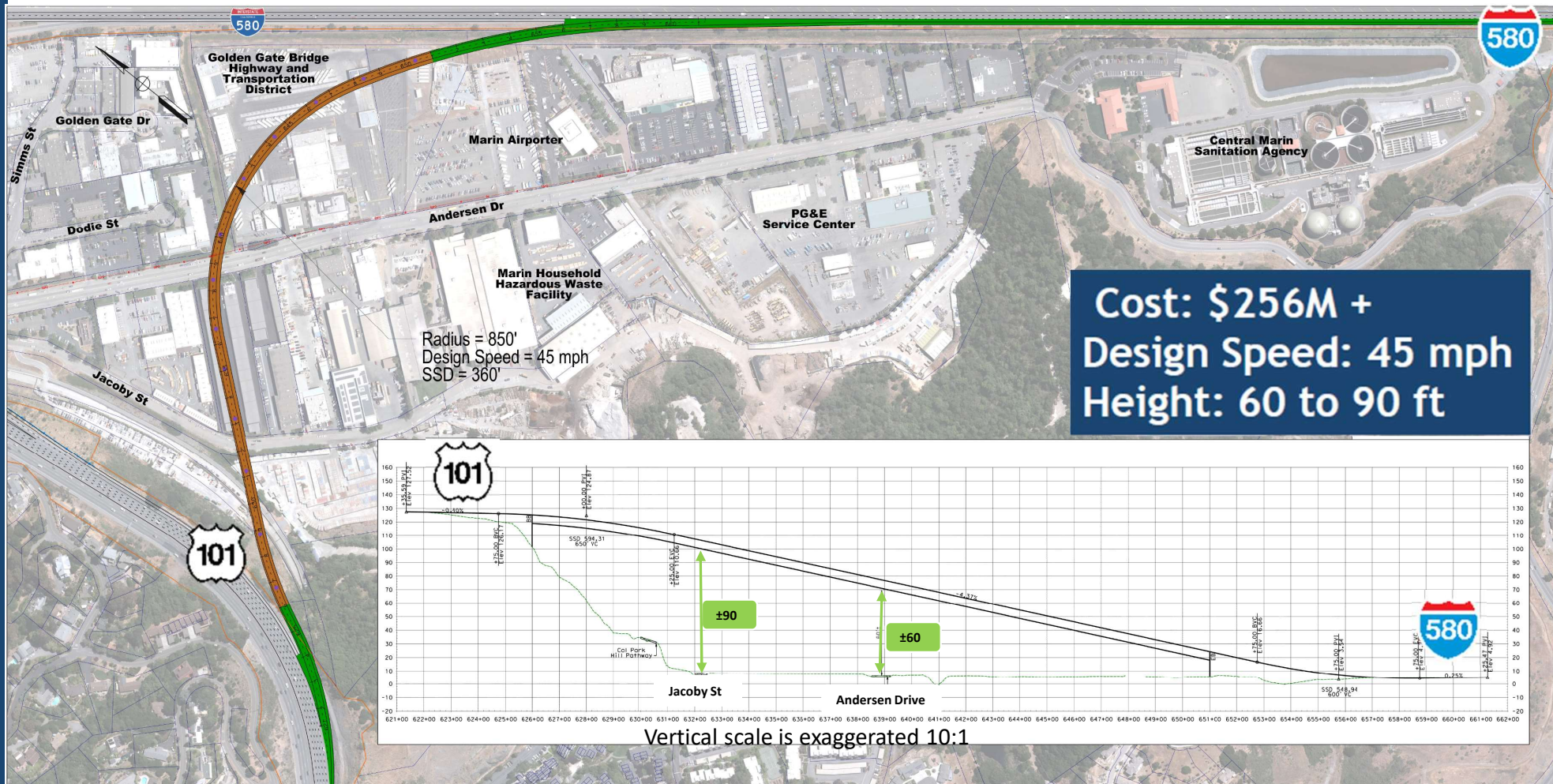


Cost: \$189M
Design Speed: 40 mph
Height: up to 50 ft



Vertical scale is exaggerated 10:1

Alternative 6 - Andersen Dr Mid-Way



Public Comment

Public Comment

Comments from Members of the Public

- Raise hand if you have a comment
 - Host will call on you and unmute you
 - Please keep your comments to 3 minutes
-
1. What are your highest priorities for the project?
 2. Which alternatives would you drop from further consideration?
 3. What are your reasons for keeping or dropping an alternative?

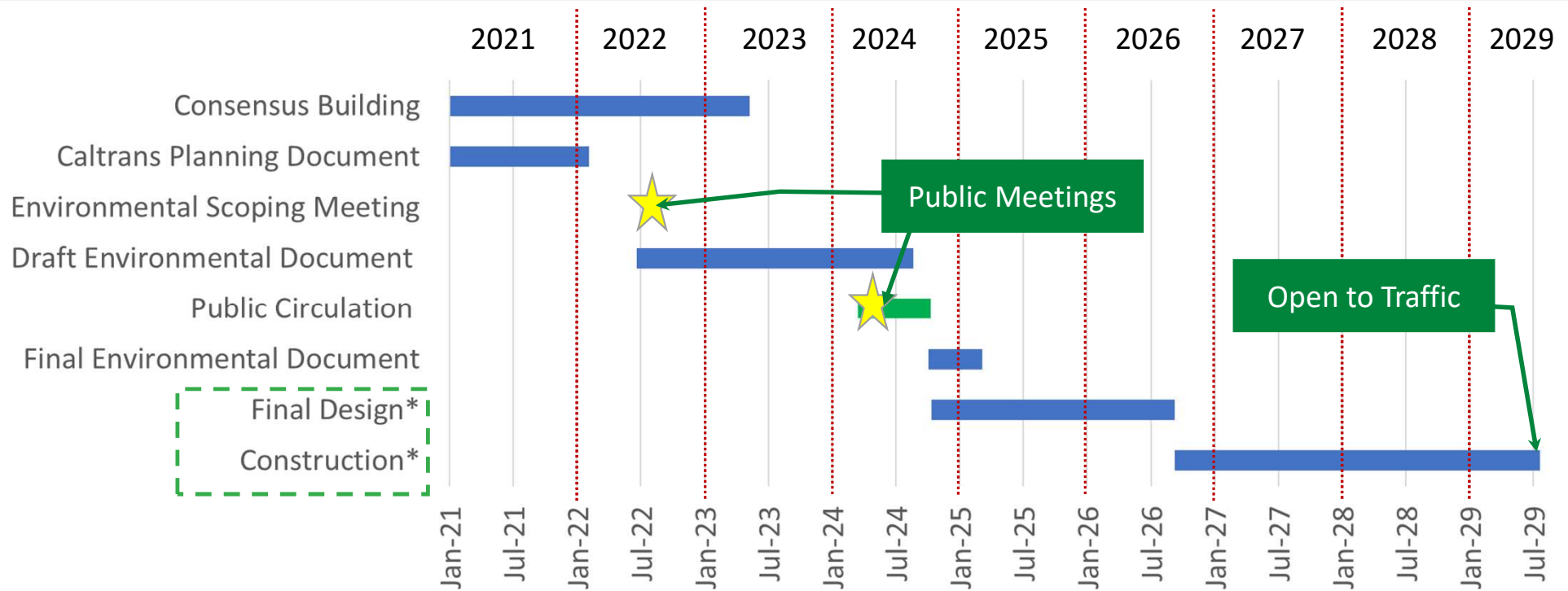
Next Steps

Next Steps and Timeline

Team Activities

- Continue coordination with city leadership and technical advisory committee
- Develop recommendations for Executive Steering Committee, Ad Hoc Committee, and TAM Board
- Prepare Project Initiation Document for Caltrans review
- Continue to meet with organizations and groups for information and input
- Initiate neighborhood education and capacity building

Targeted Project Schedule

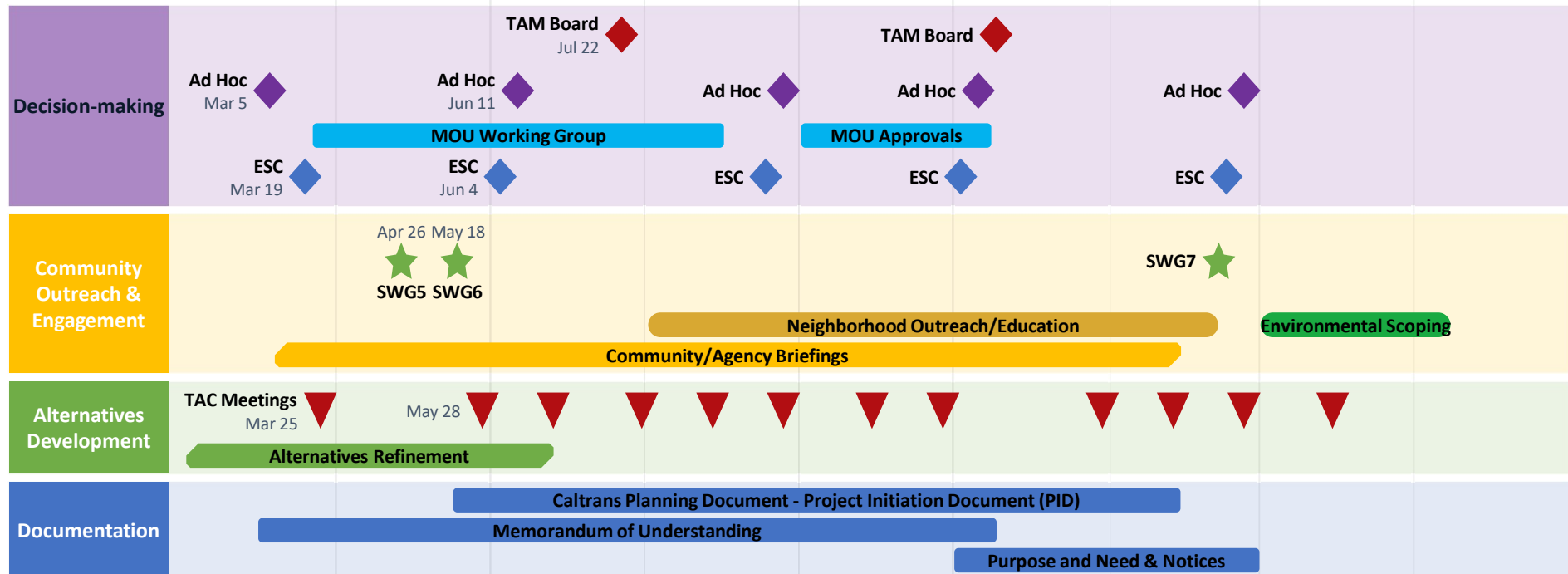


* Pending Available Funding

TAM 101-580 Near-term Planning Roadmap

2021 Feb Apr Jun Aug Oct Dec Feb Apr Jun 2022

Today



SWG Member Discussion

Clarifying Questions

- Next steps and near-term timeline

Contact Information

- Send questions and comments:
 - Molly Graham, Marin101-580@tam.ca.gov
- Project website:
 - www.Marin101-580.com

Thank You for Your Participation