



COUNTYWIDE TRANSPORTATION PLAN WORKSHOP
TRANSPORTATION AUTHORITY OF MARIN
BOARD OF COMMISSIONERS

APRIL 25, 2024
4:00 P.M.

900 Fifth Avenue
Suite 100
San Rafael
California 94901

MARIN WILDFIRE PREVENTION AUTHORITY BOARD ROOM
1600 LOS GAMOS DRIVE, ROOM 335
SAN RAFAEL, CALIFORNIA

Phone: 415-226-0815
Fax: 415-226-0816

www.tam.ca.gov

AGENDA

Belvedere
Nancy Kemnitzer

1. Chair's Welcome/Roll Call

Corte Madera
Eli Beckman

2. Countywide Transportation Plan Workshop (Discussion) – Attachment

Fairfax
Chance Cutrano

3. Open time for public expression, up to two minutes per speaker, on items not on the agenda that are within the subject matter of the agency's jurisdiction. (While members of the public are welcome to address the Board, under the Brown Act, Board members may not deliberate or take action on items not on the agenda, and generally may only listen.)

Larkspur
Gabe Paulson

Mill Valley
Urban Carmel

Novato
Rachel Farac

How to provide public comment (limited to 2 minutes or less):

Ross
P. Beach Kuhl

Before the workshop: Please email your comments to info@tam.ca.gov, no later than 5:00 p.m. Wednesday, April 24, 2024, to facilitate timely distribution to Board members. Please include the agenda item number you are addressing and your name and address. Your comments will be forwarded to the TAM Board members and will be placed into the public record.

San Anselmo
Brian Colbert

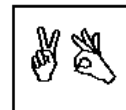
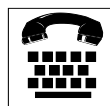
San Rafael
Kate Colin

During the workshop: The Board Chair will recognize persons from the audience who wish to address the Board during public open time or on a particular agenda item at the time that item is considered by the Board.

Sausalito
Melissa Blaustein

Tiburon
Alice Fredericks

County of Marin
Mary Sackett
Katie Rice
Stephanie Moulton-Peters
Dennis Rodoni
Eric Lucan



Late agenda material can be inspected in TAM's office between the hours of 8:00 a.m. and 5:00 p.m. The TAM Office is located at 900 Fifth Avenue, Suite, 100, San Rafael.

The meeting facilities are accessible to persons with disabilities. Requests for special accommodations (assisted listening device, sign language interpreters, etc.) should be directed to Jennifer Doucette, 415-226-0820 or email: jdoucette@tam.ca.gov no later than 5 days before the meeting date.

THIS PAGE LEFT BLANK INTENTIONALLY



**DATE:** April 25, 2024

**TO:** Transportation Authority of Marin Board of Commissioners

**FROM:** Anne Richman, Executive Director *Anne Richman*  
Derek McGill, Director of Planning

**SUBJECT:** Countywide Transportation Plan Board Workshop (Discussion), Agenda Item No. 2

---

## RECOMMENDATION

Discussion item only. The TAM Board provides feedback on the goals and strategies considered in the Countywide Transportation Plan (CTP).

## BACKGROUND

In 2023, TAM staff began work on the development of Marin County's first CTP and a countywide Community Based Transportation Plan (CBTP). Since the kickoff, staff have presented multiple elements of the CTP/CBTP including:

- Outreach and engagement plan; September 2023
- Initial CTP Board workshop focused on the vision for the CTP and major thematical elements; October 2023
- Draft Vision and an equity definition; March 2024.

The development of the CTP/CBTP is expected to continue over the course of this year, culminating in an adopted CTP/CBTP by the end of 2024.

As the CTP works to build consensus and provide a shared direction for Marin's transportation system, the CTP will develop a set of overarching strategies, specific policies, and targeted projects/programs to implement the shared short-term (10-year) and long-term (25-year) vision for our transportation system. The CTP/CBTP is expected to guide TAM's policy-making, and advance safety, equity, climate resiliency, transit recovery and priority, and transportation/land use integration in the county.

## DISCUSSION/ANALYSIS

Building on the Vision and Equity Definition presented to the TAM Board last month, the CTP Board workshop offers the TAM Board members and the public a chance to discuss two major elements of the CTP, the goals and strategies for the county's transportation system.

The draft vision statement presented at last month's TAM Board meeting sets the overall focus for the transportation system in Marin County. The vision statement, **advancing safe, equitable and resilient transportation, together**, charts the course for the development of the CTP.

In order to support implementation of the vision, three draft goals have been developed to expand on the major themes and articulate the desired outcome for the transportation system. These goals have been developed and reviewed by the Equity Working Group, Technical Advisory Committee and CTP Ad-Hoc Committee. The goals are as follows:

- **Accessible, Affordable, and Equitable System.** Provide reliable, affordable, multimodal choices for people of all ages, abilities, and income levels.
- **Safe and Complete Multimodal Network.** Grow Marin's pedestrian, bicycle, bus, ferry, rail, and road network in ways that improve safety, efficiency, and connectivity.
- **Partner to Achieve a Sustainable, Innovative, and Resilient Future.** Actively partner with public agencies, community organizations, schools, and the private sector to implement transportation strategies that support climate resiliency, the environment, housing and economic development throughout Marin's communities.

Achieving the vision and goals will take a mix of projects, programs, policies, partnerships and resources, some existing and some not currently available. At its core, the CTP will advance transportation strategies, allowing existing and future needs to be advanced over the 25-year plan horizon. These transportation strategies aim to achieve plan goals and reflect identified and/or emerging transportation needs identified through previous local, regional, state and federal plans, local calls for projects, committee discussions and public input. Overall, 15 strategies have been developed and are categorized by local, countywide/regional, or system management focus.

The CTP workshop will review the goals and dive into these strategies, including many of the following questions:

- Are the goals and strategies correct? Are we missing any goals or strategies?
- How to align each strategy with the goals articulated above?
- What policies and resources are needed to implement each strategy?
- Who needs to be at the table for successful implementation?

Staff look forward to a lively conversation around the future of the transportation system in Marin, and what actions can advance planning into practice.

## **FISCAL CONSIDERATION**

There are no fiscal impacts associated with this presentation.

## **NEXT STEPS**

Based on the input received, staff will return to the TAM Board for a discussion on the development of the draft CTP.

## **ATTACHMENTS**

Attachment A – Staff Presentation (includes workshop outline)

Attachment B – Executive Summary of CTP Context

# TAM Countywide Transportation Plan & Community Based Transportation Plan

**TAM Board of Commissioners  
April 25, 2024 WORKSHOP**

# Agenda

---

1. CTP & CBTP Overview
2. TAM Vision Background
3. CTP Vision & Equity Definition Refresh
4. Discussion Sessions
  - a. Draft CTP Goals
  - b. Draft CTP Strategies (Small Group Discussion)
  - c. Report out on Small Group Discussion
5. Workshop Summary/Next Steps
6. Public Comments



# CTP/CBTP Overview

---

- ✓ **Identify emerging areas and future transportation needs**
- ✓ **Broaden understanding of community transportation goals**
- ✓ **Advance CBTP process**
- ✓ **Convene partner agencies and build consensus**
- ✓ **Strengthen partnerships needed to deliver the plan**
- ✓ **Align local, county planning with regional and state guidance where feasible**
- ✓ **Strengthen Marin's position in competitive regional, state, and federal funding**

## **Outcomes of CTP & CBTP**

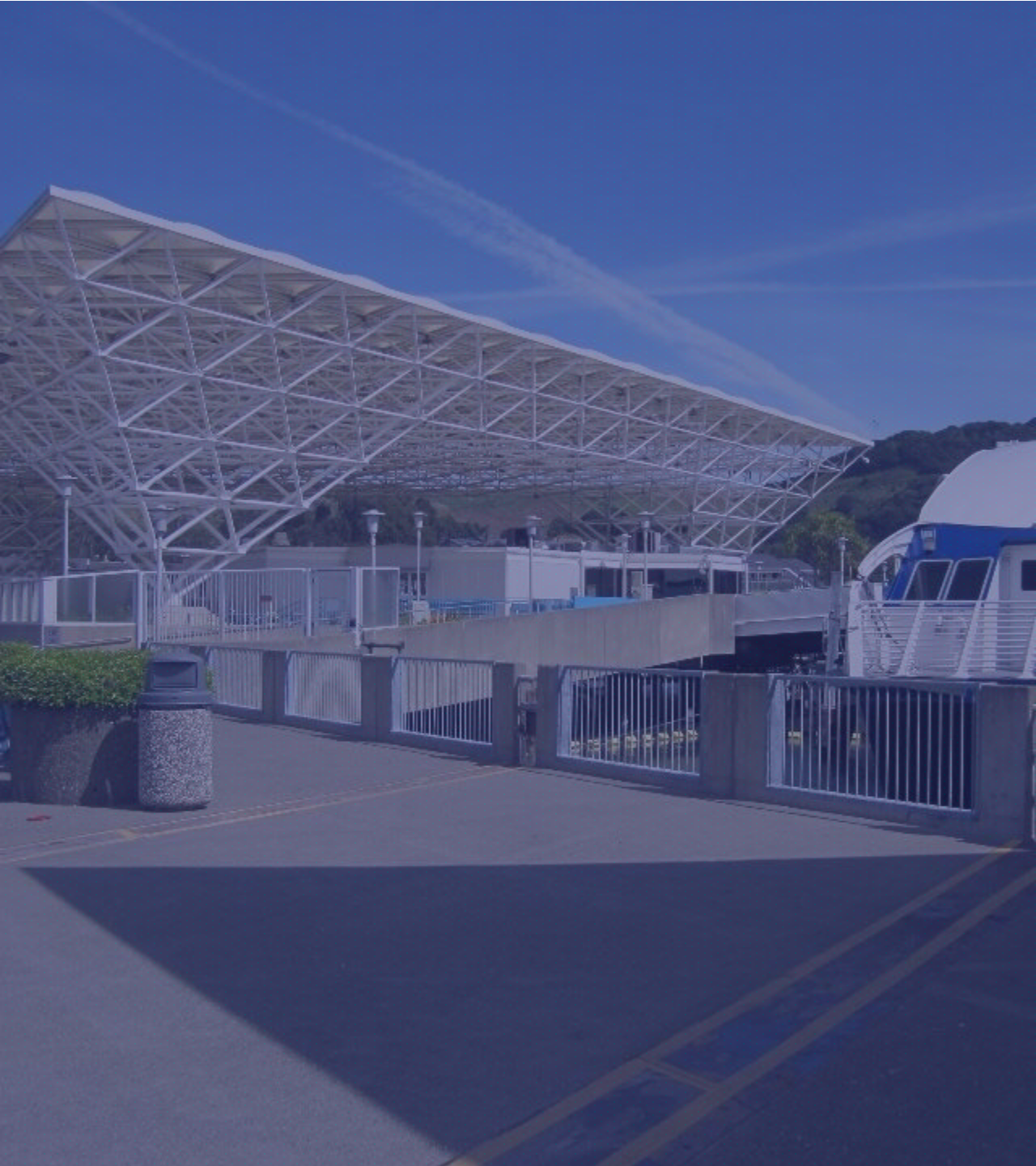
---



# CTP Framework

---

POLICY ELEMENT	DESCRIPTION
VISION	<ul style="list-style-type: none"> <li>• Concise statement of desired future</li> <li>• Provides outline of overall goals</li> </ul>
GOALS	<ul style="list-style-type: none"> <li>• General direction-setter</li> <li>• Expression of community values</li> <li>• Generally, not quantifiable or time-dependent</li> </ul>
STRATEGIES or PROGRAMS	<ul style="list-style-type: none"> <li>• Specific, clear statements that guide decision-making</li> <li>• Helps implement the plan vision</li> </ul>
PERFORMANCE MEASURES	<ul style="list-style-type: none"> <li>• Indicators to assess how well plan goals are being met and gauge progress toward realizing the vision</li> </ul>



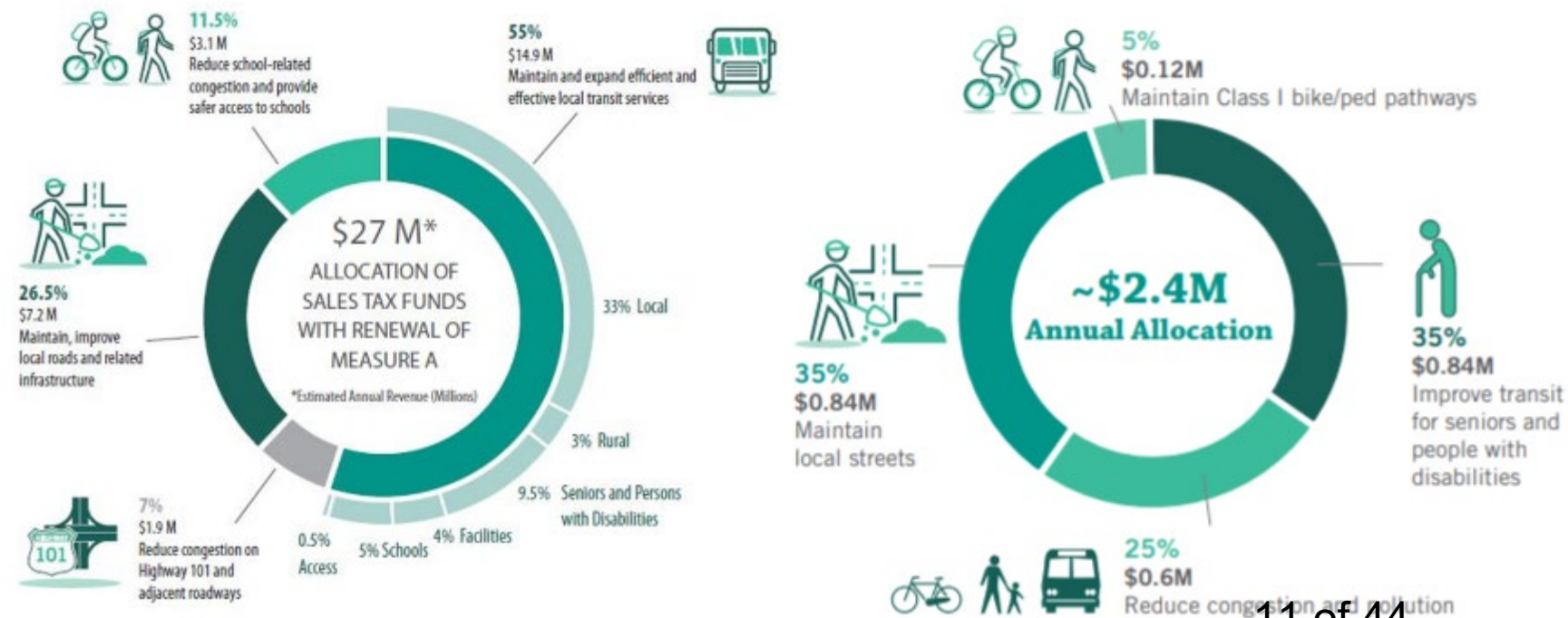
# TAM Vision Background

Since 2004, Marin has held a consistent vision for Transportation:

- balanced approach towards multi-modal investments
- focused on operations and maintenance of the system (fix it first)
- strong local support for transit & safe routes to schools
- limited/focused highway improvements

Incremental changes to visions include Equity and GHG reduction

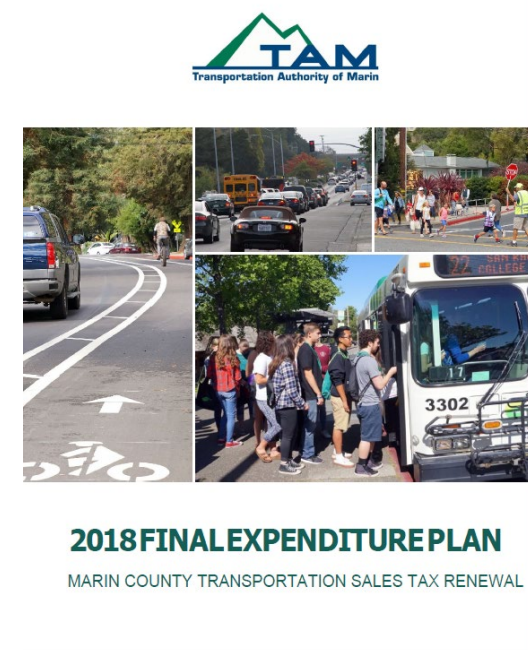
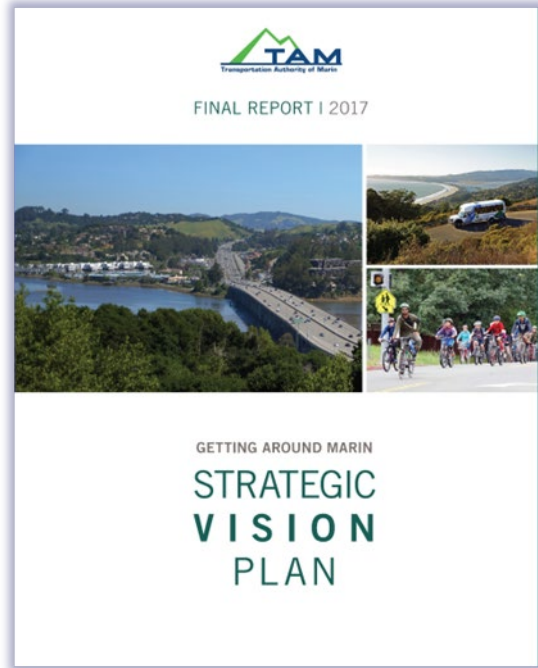
# TAM's Vision History



# Multimodal Vision in Action



# CTP Context



**CAPTI**  
Climate Action Plan for  
Transportation Infrastructure

California  
Transportation  
Plan 2050

February 2021

CTP 2050



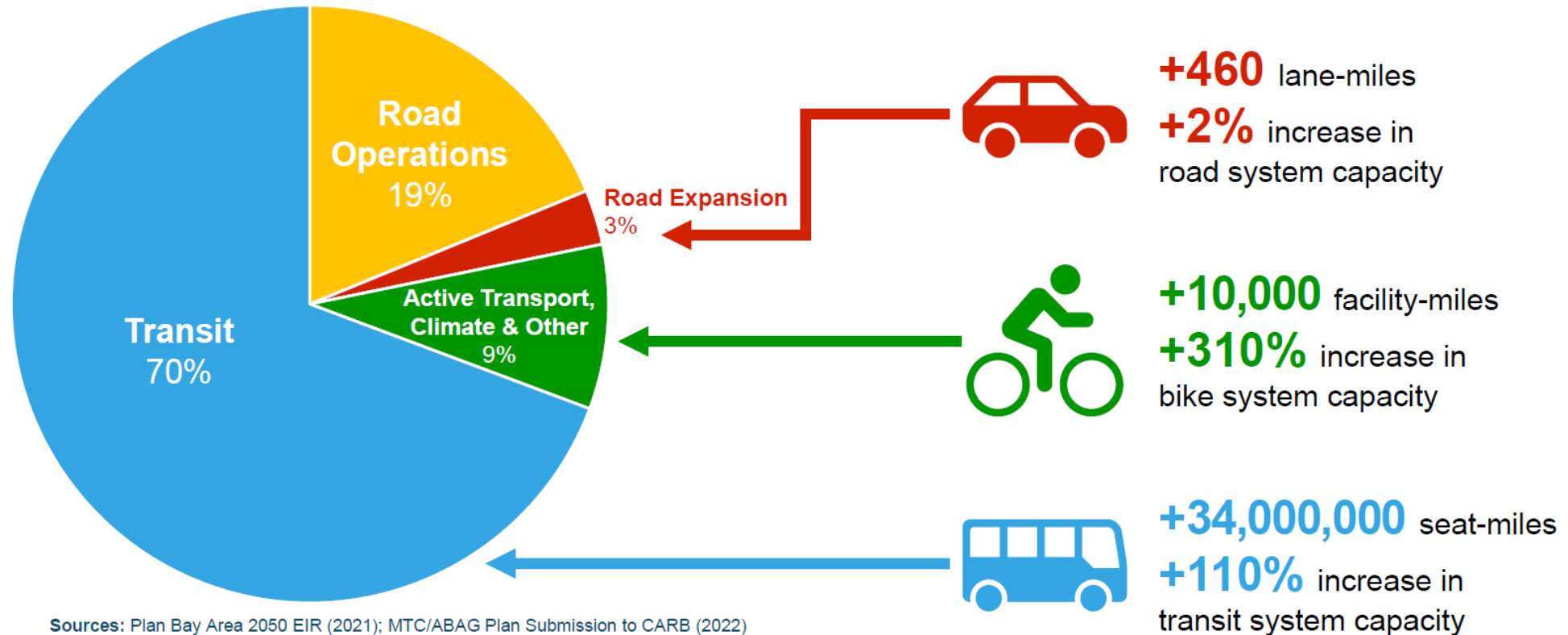
# Oct 2023 - CTP Board Workshop Recap

---

- Workshop focus - CTP Themes & Vision
- High Priority Themes
  - Schools and Local Travel Needs
  - Provide Safe Streets for all (tied)
  - Transit Ridership Growth (tied)
  - Close Gaps in the Network
- Other Priority Themes
  - Reduce GHG emissions
  - Adapt Network to Climate Change
- Board direction to refine vision statement
- Strong alignment with previous Board direction, but key differences, too

# MTC/Regional Investment Perspective

Compared to decades past, road expansion projects represent a small share of forecasted transportation spending through 2050.



Sources: Plan Bay Area 2050 EIR (2021); MTC/ABAG Plan Submission to CARB (2022)

Note: reflects Transportation Element, plus Environment Element strategies funded with transportation monies



# CTP 2050 Vision Statement & Equity Definition Refresh





Optimal  
Expand  
Frequent  
Reliable  
Future-proof

Comfort  
Evacuations  
Flooding  
Safer Streets

Engage  
Accessible  
Invest  
Repair

# Advancing safe, equitable, and sustainable transportation together.

Adapt  
Maintain  
Resilient

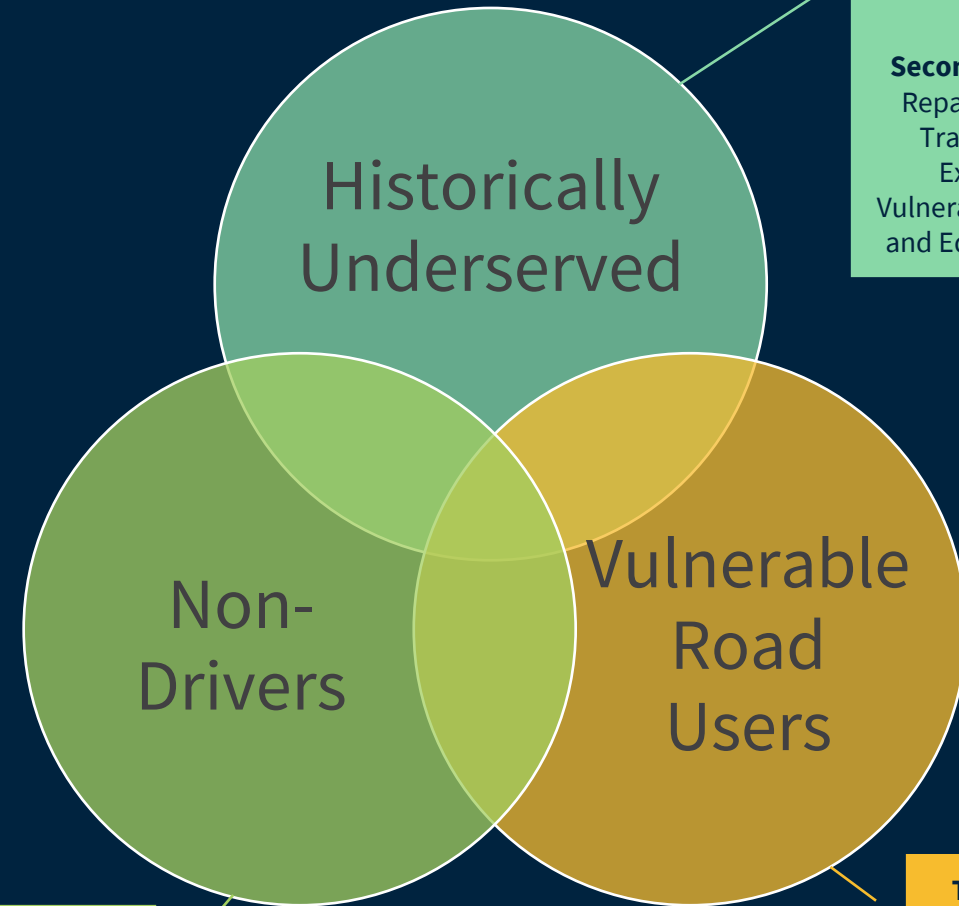
Walk  
Bike  
Bus  
Ferry  
Rail  
Roads  
Highways  
Emergent Technologies

Local agencies  
Transit providers  
Community partners  
MTC/ABAG  
Caltrans  
CCC/BCDC  
MWPA  
MCE

Engage  
Accessible  
Repair  
Invest

# equitable,

*Transportation equity is achieved through proactive and community-centered removal of travel barriers and transportation-related disparities for historically and systemically marginalized and excluded groups.*



**Top Disparity/Barrier:**  
Access

**Secondary:** State of Good Repair, Roadway Safety, Traffic and Emissions Exposure, Climate Vulnerability, User Outreach and Education, Travel Cost

**Top Disparity/Barrier:**  
Non-Driving Access

**Secondary:**  
Roadway Safety

**Top Disparity/Barrier:**  
Roadway Safety

**Secondary:** Security and Comfort, Traffic and Emissions Exposure

### Historically Underserved Communities

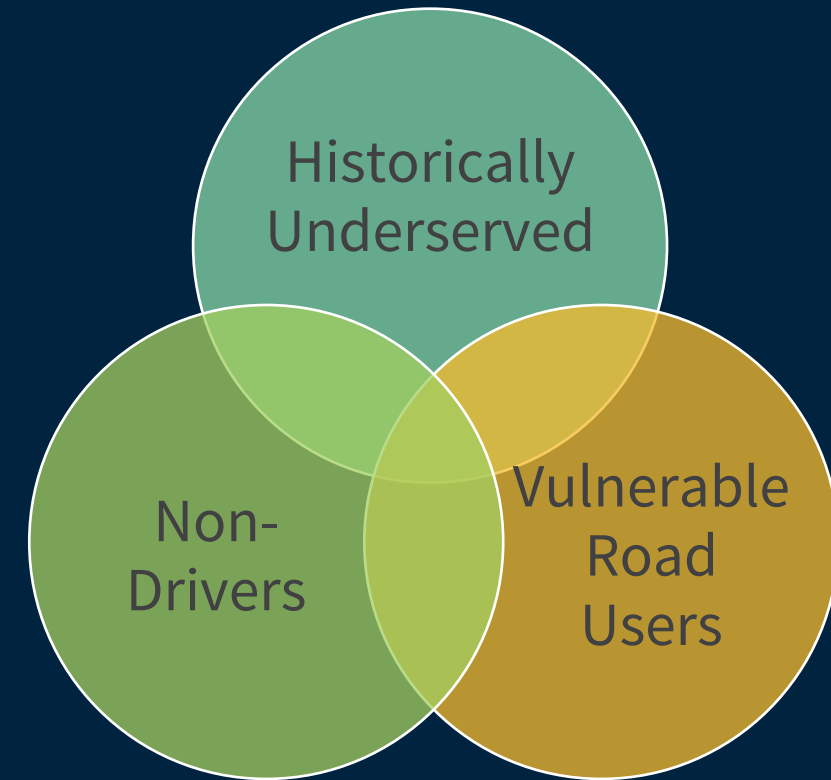
- MTC Equity Priority Communities (geographic)
- Low-income residents and workers
- Black, Hispanic, Indigenous, Asian population, incl. non-English speakers
- People with disabilities
- Rural residents and workers

### Vulnerable Road Users

- Seniors 65+
- Youth <15
- People with disabilities
- Unhoused individuals
- Bicyclists and pedestrians

### Non-Drivers

- Legal reasons (<16, undocumented residents, DL suspension)
- Financial or physical reasons (some people with disabilities or very low-incomes)
- Choice or comfort reasons (aging seniors, youth, other reasons)



**These populations are not static, and the goal is that, over time, these lists and maybe even entire categories can be addressed through changes to the transportation system.**



# What we have been hearing

# Engagement Process & Overview

---

- ✓ Two coordinated tracks: stakeholder engagement and public outreach
- ✓ Data-driven process
- ✓ Fit the right strategy with the right groups at the right time & meet the public where they are
- ✓ Focus on Equity Priority Communities
- ✓ Align with MTC's CTP and CBTP guidance

# Engagement Activities

---

- ✓ Three Focus Groups Completed
  - Environmental/Bike Coalitions
  - Business Community
  - West Marin Focus Group
  
- ✓ CTP Roadshow
  - Presentations to local groups
  - Citizens' Oversight Committee
  
- ✓ Online Survey Launch in May
  - Focused on Strategies and Priorities
  
- ✓ Upcoming Localized Pop-Up Events
  - Accessible high traffic locations
  - Variety of interactive elements (i.e., Feedback walls, Live polls, Activities for kids)
  
- ✓ Upcoming Focus Group – Senior and Disabled Populations

# Specific Needs Identified

---

## Local Transportation Needs

- Safety Improvements
- School Transportation Services
- Coordinated Signal Improvements & Vehicle Pre-emption
- Regional Bikeway Network

## Regional Connections

- Richmond San Rafael Bridge Connections
- State Route 37 & Rail Line

## Climate and Mobility

- ZEV infrastructure and Transition Plans
- Travel Education

## Transit

- Increase Access to:
  - Priority Housing sites
  - West Marin & National Parks
  - SR-37 Bus Service Connection in Marin
  - Southern Marin Transit Hub
- Transit Priority (speed and reliability)
- Consolidation of Regional Transit Stops

Many others too!

# Discussion Sessions





# Overview of Discussion Sessions

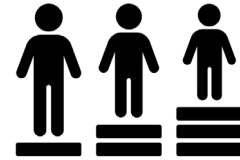
---

- **Session 1 – CTP Goals**
  - General Discussion on Goals
  - Do these goals resonate with you?
  - Do they align with locally adopted goals, plans or policies?
  - Are we missing major themes?
- **Session 2 – CTP Strategies**
  - Breakout groups of 3-4 Commissioners
  - Support team of consultant/staff will have example templates
  - Small groups will select 1-2 of the strategies in each category to discuss
  - Commissioners will report out on small group discussions

# Discussion Session – Draft CTP Goals



# Advancing safe, equitable, and sustainable transportation together.

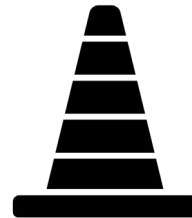


Created by Adrien Coquet  
from Noun Project

## Accessible, Affordable, and Equitable System

Provide reliable, affordable, multimodal choices for people of all ages, abilities, and income levels

---



Created by sentya irma  
from Noun Project

## Safe and Complete Multimodal Network

Grow Marin's pedestrian, bicycle, bus, ferry, rail, and road network in ways that improve safety, efficiency, and connectivity.

---

## Partner to Achieve a Sustainable, Innovative, and Resilient Future

Actively partner with public agencies, community organizations, schools, and the private sector to implement transportation strategies that supports climate resiliency, the environment, housing and economic development throughout Marin's communities. 27 of 44



Created by Diego Naive  
from Noun Project

# Draft CTP Goals

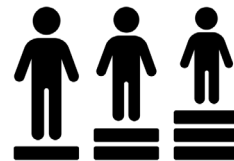
---

## Discussion Questions:

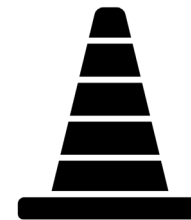
- Do these three goals resonate with you?
- Do they align with locally adopted goals, plans or policies?
- Are we missing major themes?

# Draft CTP Goals

---



Created by Adrien Coquet  
from Noun Project



Created by sentya irma  
from Noun Project



Created by Diego Naive  
from Noun Project

# Discussion Session – Draft CTP Strategies



# Discussion Session: Small Groups

---

- ✓ Break into groups of 3-4 Commissioners
- ✓ Small groups will select 1-2 of the strategies in each category to discuss
- ✓ Questions for each strategy:
  - ✓ What policies would support the strategy?
  - ✓ What is needed to ensure each strategy meets the CTP goals?
  - ✓ What should be considered to maximize outcomes?
  - ✓ What partners are needed for success?
- ✓ Choose a Commissioner to report out at end

# Draft CTP Strategies – Local Focus



Created by Carla Porcancula  
from Noun Project



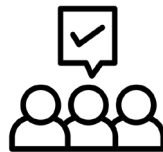
Created by parkim  
from Noun Project



Created by Jms. Jlsen  
from Noun Project



Created by Cuzato  
from Noun Project



Created by metami septiana  
from Noun Project

## STRATEGIES WITH LOCAL FOCUS (typically locally planned and implemented)

**Fix It First** – operate and maintain existing streets, transit systems, and the regional pedestrian and bikeway network.

**Safe System Approach** – implement the new national Safe System for road users, safer vehicles, safer speeds, safer roads, and post-crash care to reach the zero deaths vision.

**Safe School Travel** – coordinate and support active transportation and/or bus options for schools.

**Walkable Communities** – a connected, accessible, and high-quality active transportation environment within a half-mile of SMART stations, transit hubs, activity centers, and commercial districts.

**Community Identified Investments** – community-informed investments in transportation accessibility, affordability, and comfort for historically and systemically marginalized and excluded groups.

# Draft CTP Strategies – County or Regional Focus



Created by aindri muttakin  
from Noun Project



Created by Alex Bychkov  
from Noun Project



Created by Adrien Coquet  
from Noun Project



Created by ARSO  
from Noun Project



Created by Ruth Miller  
from Noun Project

## STRATEGIES WITH COUNTY OR REGIONAL NETWORK FOCUS (typically multi-jurisdictional)

**High Quality Transit** – a coordinated, convenient, reliable, and accessible transit system.

**Complete Active Transportation Network** – a continuous primary bikeway network of pedestrian and bicycle facilities linking activity centers.

**Regional Connectivity** – a coordinated system of regional freeway, bridge, rail, and ferry connections and travel options to surrounding counties.

**Connected & Complete Community Corridors** – Reconnecting communities with complete streets and safe crossings that include context-sensitive, community-informed solutions for US-101, major and minor arterials, and major hubs.

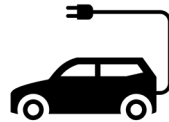
**Flexible Ride Programs** – public and private ride services for seniors, people with disabilities, and other non-drivers, including services for intra-county medical trips.



# Draft CTP Strategies – System Focus



Created by Kyuhong Kim  
from Noun Project



Created by art supriharyati  
from Noun Project



Created by gnomonarts  
from Noun Project



Created by early miran  
from Noun Project



Created by Adrien Couvet  
from Noun Project

## STRATEGIES WITH SYSTEM MANAGEMENT FOCUS (typically multi-agency, high level of partnering)

**Commute Alternatives and Travel Education** – ongoing travel marketing, public communication/outreach, and education campaigns to generate awareness and comfort using county travel options, modal networks, and financial assistance programs.

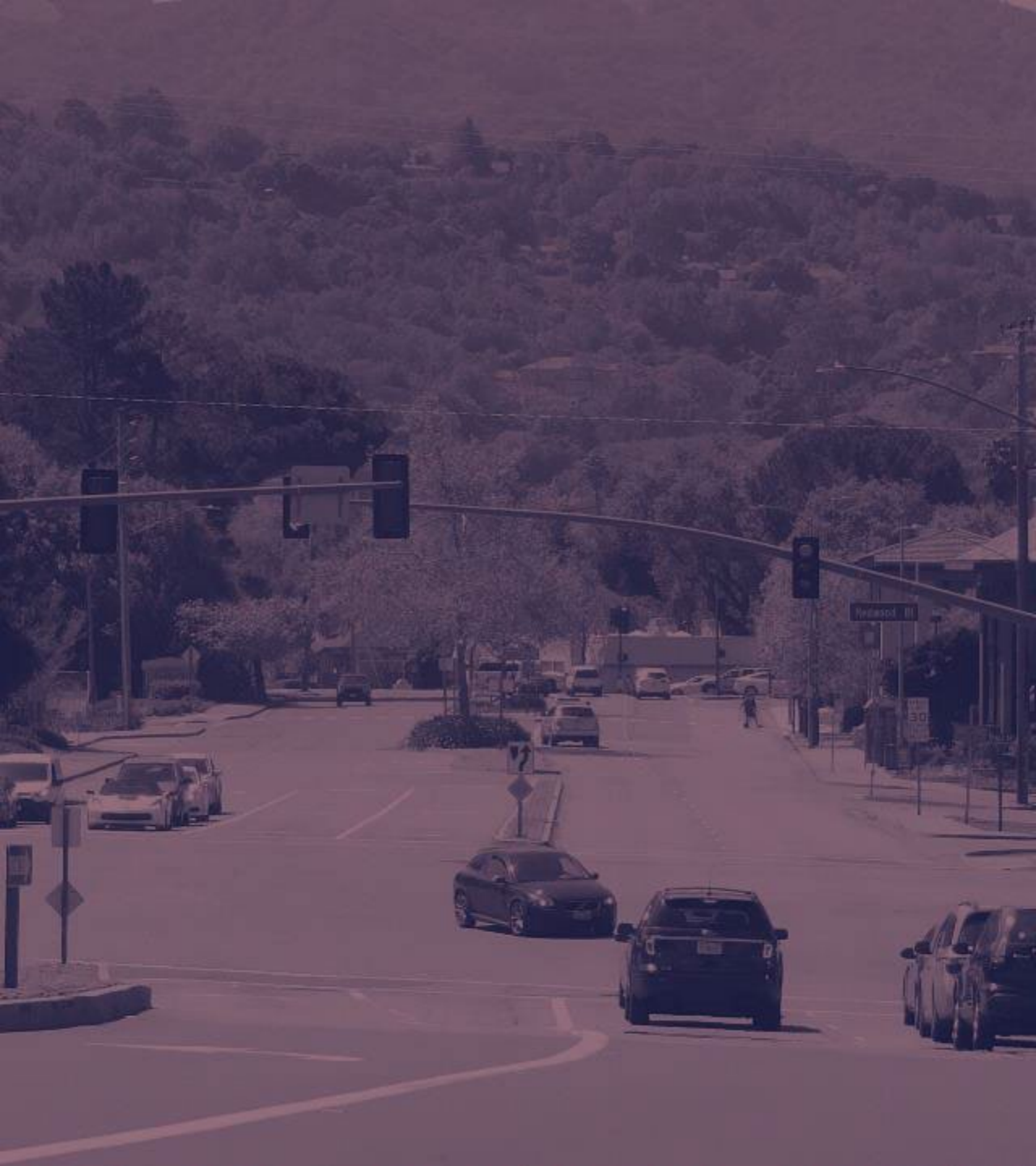
**Zero Emission Vehicles** – supporting greenhouse gas emission reductions through light duty zero emission vehicles via a coordinated network of transportation charging/fueling technology, and coordination on public agencies fleet vehicle replacement for light and medium duty vehicles.

**Adaptation to Climate Change** – address the effects of sea level rise, flooding, wildfires, heat, and other climate-induced events on the transportation system.

**Visitor Travel Management** – mode shift and communication strategies to improve the visitor experience and reduce the effects of visitor traffic and parking.

**Transportation Data & System Management** – develop a county travel data approach to monitor travel patterns and changes to the network, and support management of new technologies including the introduction of connected and autonomous vehicles.

# Workshop Summary/Next Steps



# CTP Schedule

- ✓ One more Board workshop planned
- ✓ Draft CTP late summer
- ✓ Final CTP – Fall 2024

OCT 23	NOV – DEC 23	JAN – FEB 24	MAR- JUN 24	JUL- SEP 24	OCT- NOV 24
Purpose & Context	Vision	Needs Assessment	CTP Strategies	Draft CTP	Final CTP

# Upcoming Board Workshop

---

## Workshop 1: Vision & Strategies (October 2023)

- ✓ CTP Context
- ✓ Board Visioning Discussion

## Workshop 2: Goals & Strategies (April 2024)

- ✓ Review CTP Vision & Equity Definition
- ✓ Draft CTP Goals & Strategies
- ✓ How to Advance Strategies

## **Workshop 3: Priorities & Implementation (July 2024)**

- ✓ **Priorities & Implementation**
- ✓ **Key Elements of Draft CTP and CBTP**



# Public Comment

---

THIS PAGE LEFT BLANK INTENTIONALLY

# MARIN CTP CONTEXT – EXECUTIVE SUMMARY

JANUARY 2024

## Purpose of Marin Countywide Transportation Plan (CTP)

The purpose of the CTP is to define a strategic, long-term vision that builds consensus and provides a shared direction for Marin County's transportation system in alignment with broader social, economic, and environmental goals in the county, region, and state. The CTP will set the course for the development, delivery, and operation of a multimodal transportation network that effectively serves all members of the Marin County community.

Analysis and recommendations included in the CTP will be guided by an outreach process that prioritizes dialogue and collaboration with Marin County residents and other stakeholders. A combination of in-person and digital outreach efforts will provide multiple opportunities for people to learn about the planning process, ask questions, and share their transportation priorities, feedback, concerns, and ideas.

## Purpose of CTP Context

CTP Context is the first of three working documents designed to support the development of the first Marin Countywide Transportation Plan (CTP) and Community Based Transportation Plan (CBTP). The purpose of this document is to provide a foundational description of the policy context and transportation system for Marin County. This includes a discussion of changes in local, regional, state, and federal policies and travel that have occurred since adoption of the 2017 Strategic Vision Plan (SVP).

## Relationship of CTP to State and Regional Plans

The CTP process is a collaborative effort with the county, towns/cities, transit operators, regional and state partners, and other stakeholders to align and reflect local, regional, and state policies and priorities. Delivering and funding transportation improvements requires strong partnerships with regional, state, and federal partners, and identifying areas of alignment with Metropolitan Transportation Commission (MTC) policies strengthens regional/state/federal grant funding competitiveness.

MTC has developed CTP Guidelines<sup>1</sup> to support a "common planning framework" between CTPs, Plan Bay Area's and the state's transportation, climate, and equity goals. State law established an inter-dependent relationship between CTPs and the regional transportation plan (RTP) developed as Plan Bay Area. Public participation is a fundamental requirement, as is advancing equity through investments and policies that improve mobility options for residents of Equity Priority Communities (EPC) and other historically disadvantaged populations included in Community-based Transportation Plans (CBTPs).

## Overview of Relevant Transportation Plans

---

<sup>1</sup> <https://mtc.ca.gov/digital-library/6781-guidelines-countywide-transportation-plans>

# MARIN CTP CONTEXT – EXECUTIVE SUMMARY

JANUARY 2024

## California Air Resources Board (CARB) 2022 Scoping Plan

The 2022 **Scoping Plan for Achieving Carbon Neutrality** (2022 Scoping Plan) lays out a path to achieve carbon neutrality by 2045 and reduce greenhouse gas (GHG) emissions by 85 percent below 1990 levels no later than 2045, as directed by AB 1279. The emission reduction targets set by AB 1279 in 2022 are greater than those established by AB 32 and SB 32<sup>2</sup>. In the transportation sector, the Scoping Plan includes targets to **reduce VMT by 25 percent below 2019 levels by 2030 and 30 percent by 2045**; ensure all new medium and heavy-duty truck sales are zero emission by 2040, and 100 percent of passenger and other locomotive sales are zero emission models by 2030. The VMT reduction target of 25-30 percent is greater than the 15 percent reduction target identified in the prior scoping plan.

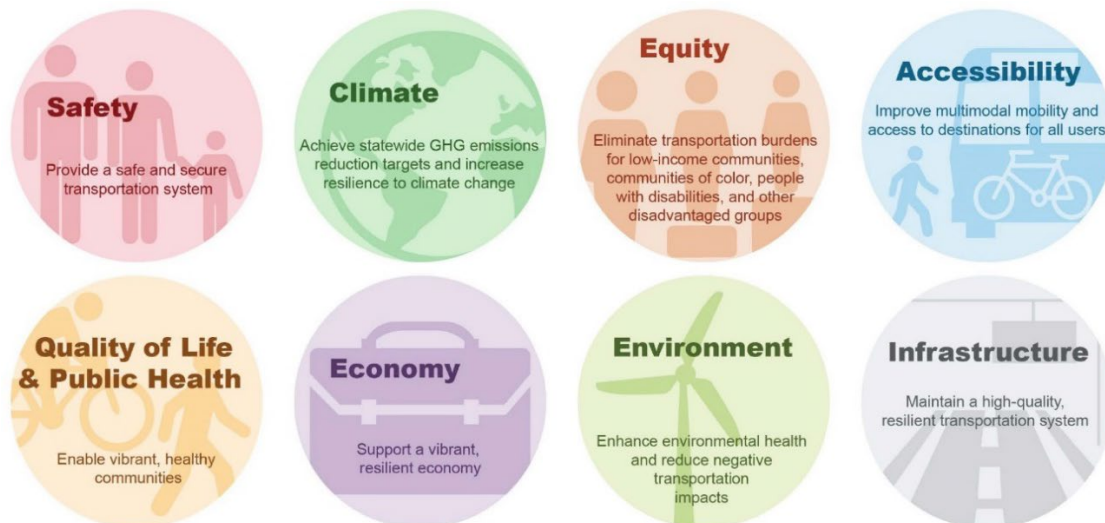
## California Transportation Plan (CTP) 2050

The California Transportation Plan (CTP 2050), completed by Caltrans in February 2021, is a “long-range policy plan that provides a collective vision and a set of goals, policies and recommendations to help guide transportation decisions and investments in the 21<sup>st</sup> Century that meet our multimodal mobility needs and reduce greenhouse gas emissions.”

### The CTP 2050 Vision

*“California’s safe, resilient, and universally accessible transportation system supports vibrant communities, advances racial and economic justice, and improves public and environmental health.”*

The following CTP 2050 climate goals include achieving statewide GHG emission reduction targets and increasing resilience to climate change.



<sup>2</sup> AB 32 (2006) originally set a target of reducing emissions to 1990 levels by 2020. After the state met this goal, SB 32 strengthened the state’s GHG reduction target to at least 40% below 1990 levels by 2020. The state committed to greater targets with AB 1279 that directs the state to be carbon neutral by 2045.



# MARIN CTP CONTEXT – EXECUTIVE SUMMARY

JANUARY 2024

## California Climate Action Plan for Transportation Infrastructure (CAPTI)

The California State Transportation Agency (CalSTA) completed CAPTI in 2021 because the transportation sector is the largest contributor of California’s GHG emissions. CAPTI implements the above eight goals of the California Transportation Plan 2050 (CTP 2050). The vision for the Action Plan is to outline a holistic framework that aligns the state’s transportation infrastructure investments with the state’s climate, health, and social equity goals, while also maintaining the commitment made in Senate Bill (SB) 1 to a fix-it-first approach to transportation.

## Plan Bay Area 2050 (PBA 2050)

PBA 2050 is a 30-year regional plan for the nine county Bay Area with a horizon year of 2050 that was adopted in 2021. The **guiding principles of the plan are to make the region more affordable, connected, diverse, healthy, and vibrant. Equity and resilience are both woven** throughout the plan. Plan Bay Area is required under SB 375 to demonstrate GHG reduction through integrated transportation and land use planning. PBA 2050 is required to demonstrate a 19% GHG reduction through low carbon transportation and land use investments. PBA 2050 also recognizes that these investments need to work together to achieve affordable and inclusive communities.

## Marin County Strategic Vision Plan

The 2017 Strategic Vision Plan (SVP) was the culmination of three years of outreach and deliberation that refined the 2003 Vision Plan for Marin County.

***“TAM’s vision is to have an efficient and effective transportation system, one that enhances our scenic environment, provides equity for all of our users (including our vulnerable populations), and grows our economy for our residents, visitors, and workforce.”***

***“The updated Vision supports the previous 2003 Vision Plan with the development of a multimodal transportation system and recognizes that providing incremental but substantial improvements to our transportation system will be more effective than one single project or program to address our challenges in how we get around. Without significant opportunities for substantial increases in roadway capacity, operational enhancements and managing demand through multimodal travel options will be effective in enhancing mobility, both on Highway 101 and on local connector roads.”***

The *Vision* is intended to reinforce and support TAM’s mission to support the economy, environmental health and safety, and ensure equity. The SVP provides a planning framework that seeks to accomplish the following outcomes.

- Contribute to economic vitality;
- Create a flexible system that responds to changing technology;

# MARIN CTP CONTEXT – EXECUTIVE SUMMARY

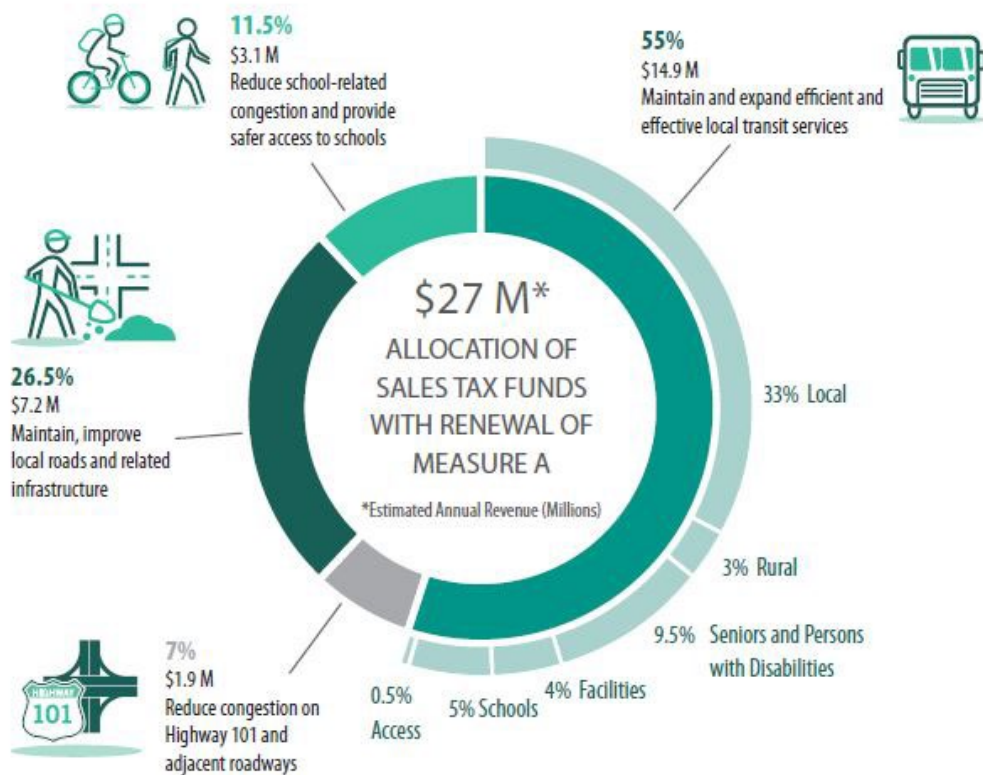
JANUARY 2024

- Develop an efficient and effective transportation system;
- Support a healthy environment and a healthy population;
- Achieve safer travel; and
- Enhance mobility and access for all.

The SVP is somewhat unique in that it is programmatic in nature, providing a combination of a clear vision and goals while providing the flexibility to identify programs and projects that evolve to meet changing needs and evolving transportation options.

## Marin Measures A/AA and B

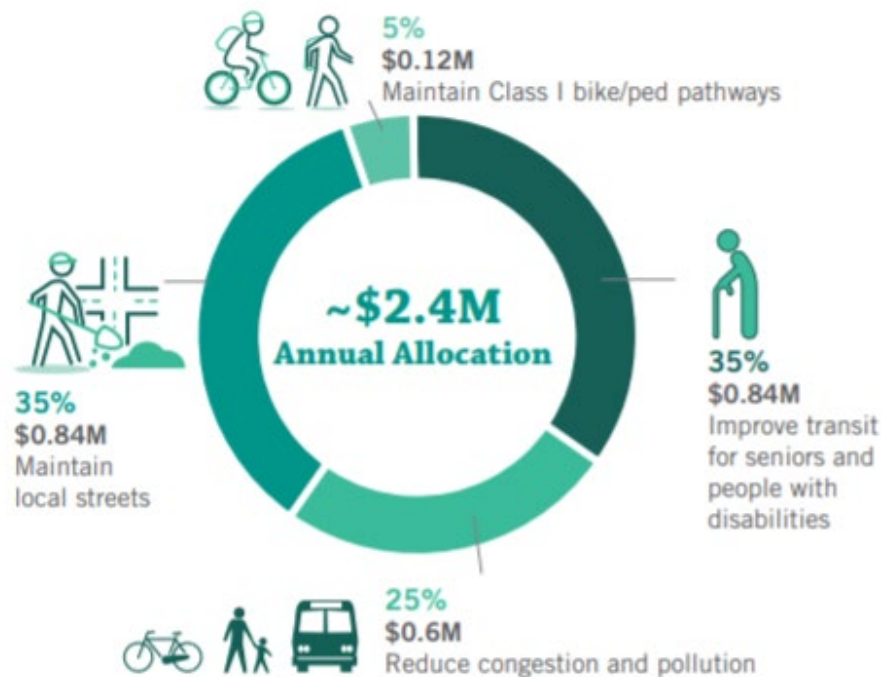
Measure A, the original measure that dedicated local sales tax revenues to transportation needs over a twenty-year period from 2005 to 2025, was approved by 71.2% of Marin voters in November 2004. Measure A was a major source of transportation funding in Marin County for 14 years and was set to expire on March 31, 2025. As an effort to renew Measure A, Measure AA was approved by 76.7% of Marin voters in November 2018 (effective as of April 2019) and extended the transportation sales tax for another 30 years to 2049. The following pie chart shows estimated annual Measure A/AA allocations.



# MARIN CTP CONTEXT – EXECUTIVE SUMMARY

JANUARY 2024

The Marin County Vehicle Registration Fee (VRF), approved by voters as Measure B in November 2010, dedicates an estimated \$2.3 million annually in VRF revenues to transportation projects and programs in Marin. The original Measure B Expenditure Plan directed staff to develop a Measure B Strategic Plan, which was adopted in July 2011. The Measure B Expenditure Plan underwent a review process in 2022. The review process commenced through the TAM Citizens' Oversight Committee (COC) meetings, along with engagement of various stakeholders to provide input and recommendations for suggested revisions. The review process concluded when the TAM Board adopted the Amended Measure B Expenditure Plan in February 2023. The following pie chart shows estimated annual Measure B allocations.



## Other Elements of CTP Context Document

CTP Context provides an overview of the following additional topics.

- Marin Transportation History (Section 1)
- TAM Accomplishments and Ongoing Programs & Projects (Section 1)
- Key State Legislation (Section 2)
- Marin County Plans (Section 2)
  - Measure A/AA Expenditure Plan
  - Measure B Expenditure Plan
  - Active Transportation Plans
  - Highway Projects
  - Community Based Transportation Plans (CBTPs)
  - Senior Mobility in Marin

# MARIN CTP CONTEXT – EXECUTIVE SUMMARY

JANUARY 2024

- Safe Routes to School (SR2S)
- Climate Vulnerability
- Safety
- Existing Conditions (Section 3)
  - Active Transportation
  - Congestion Hot Spots
  - Demographics
  - Public Transit
  - Safety
- Emerging Issues (Section 4)
  - Climate, Demographics, Equity, Finance/Funding, Land Use-Transportation Connectivity, Managed Highway Lanes, Safety, Travel Behavior Changes, Vehicle Technology
- Future Trends (Section 5)
  - Climate Change, Land Use Forecasts, and VMT Forecasts