



US-101/I-580 Multi-Modal and Local Access Improvement Project

Community Working Group
Meeting #3
July 1, 2025



ZOOM Protocols & Meeting Guidelines

Zoom Meeting Protocols

- Everyone will be put on Mute to reduce background sounds. Meeting Host will unmute you when it is your turn to speak.

During Presentations

- The team will organize and moderate clarifying questions about presentation content.
- Everyone: Use the Chat to Panelists feature to ask clarifying questions.
- If you have comments about the project, please hold them until discussion or public comment.

During Discussion

- Community Working Group members can **Raise Hand** to ask questions/make comments. We will open it to general conversation whenever possible.

During Public Comment

- Public participants can **Raise Hand** to provide comments.

Meeting Guidelines

- Please be concise, this is a challenging format for discussion
- Be honest and constructive, build on the ideas of others

Today's Meeting Agenda

- Welcome and Introductions
- Scoping Meeting Recap and Environmental Studies Status Update
- Preliminary Traffic Analysis Results
- Bellam Off-Ramp Widening Project Update
- Bellam Blvd Concepts Update
- Bellam Workshops Recap

Community Working Group

Interest	Member	Organization	Alternate
Bike & Pedestrian	Philip R. Mooney	San Rafael Bike/Ped Adv. Comm.	Barry Bergman
Bike & Pedestrian	Warren Wells	Marin County Bicycle Coalition	Tarrell Kullaway
Business	Jim Rosenfield	Country Mart, Larkspur Landing	Elaine Lin
Business	Richard Atwood	Larkspur	
Business	Stephanie Plante	East San Rafael Working Group	
Business	Karen Strolia	San Rafael Chamber of Commerce	
Community	Alex Vollmer	Spinnaker Point HOA	
Community	Dave Bonfilio	Baypoint Lagoons HOA	
Community	Dave Pedroli	San Rafael City Schools	
Community	Esmeralda Garcia	Multicultural Center of Marin	
Community	Jim Draper	Fed. of San Rafael Neighborhoods	Richard Bernstein
Community	Jon Horinek	College of Marin	
Community	Kevin Hagerty	League of Women Voters	
Community	Michele Barni	Point San Quentin Village HOA	
Community	Omar Carrera	Canal Alliance	
Commuter	Air Gallegos	East Bay-San Rafael	
Commuter	Vacant	East Bay-Southern Marin	
Environmental	Kate Powers	Marin Conservation League	
Environmental	Greg Brockbank	Sustainable San Rafael	Wendy Kallins
Transit Rider	Dave Troup	Rides GGT through project area	

Project Team

Transportation Authority Marin

- Anne Richman, Executive Director
- Dan Cherrier, Principal Project Delivery Manager
- Connie Fremier, Project Manager
- Molly Graham, Public Outreach Coordinator

Consulting Team

- Chadi Chazbek, Project Manager, Kimley-Horn
- Davy Huang, Project Engineer, Kimley-Horn
- Charles Gardiner, Facilitator, Catalyst Group
- Linadria Porter, Outreach Manager, Catalyst Group

Community Working Group Purpose

Provide Input and Guidance

- Support development of local improvements alternative
- Discuss environmental review issues and topics
- Comment on project alternatives benefits, impacts, preferences
- Work with others to identify the alternative that best meets the needs of the community and the region

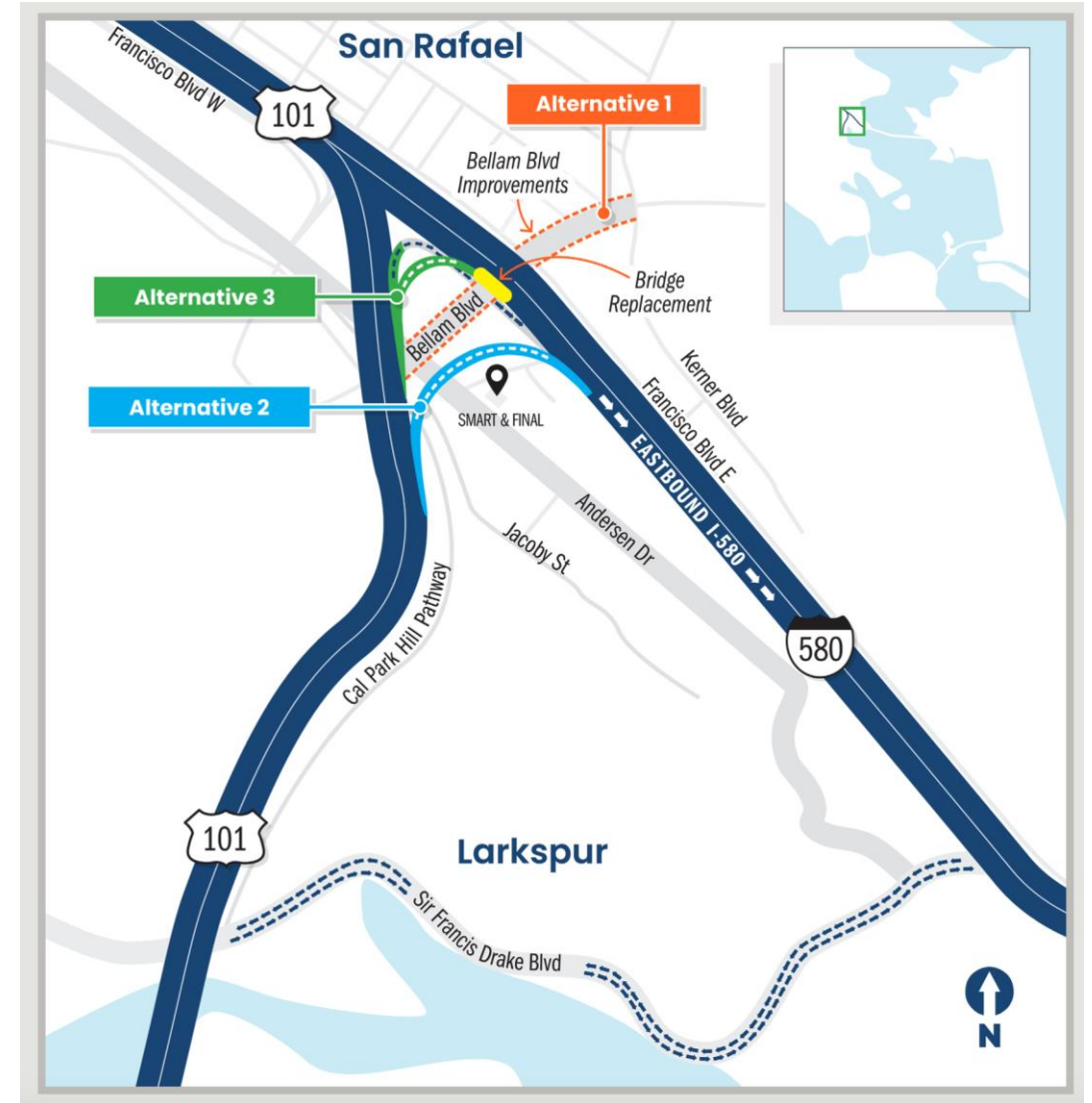
Be a Conduit with the Community

- Advise on community engagement approaches
- Inform your constituents of project issues and progress
- Notify community of opportunities to engage and comment
- Represent the issues and concerns of your community

Project Alternatives

3 Build Alternatives + 1 No-Build Alternative

- **Alternative 1:** Local street improvements on Bellam Boulevard
- **Alternative 2:** Connector between US 101 and I-580 along Simms Street + all improvements in Alternative 1
- **Alternative 3:** Connector near Bellam Blvd off-ramp + all improvements in Alternative 1
- **No-Build**



Scoping Meeting Recap and Environmental Studies Status Update

Environmental Scoping Meeting Summary

- Held October 1st , 2024 at 5:30 -7:30pm. Summary report is available on the Project Website
- Scoping comment period ran from September 27 to November 14, 2024

Summary of Comments

- Majority of responses received were positive and in support of the Project
- Comments received were mostly related to traffic congestion/conflicts, alternatives not considered, and safety

Environmental Phase Update

Design

- Coordinating with CT on approval of roadway geometrics
- Working on structures design for bridge structures

Environmental Technical Studies

- Fall and Spring Biological Surveys are completed for the larger study area.
- Archaeological and Historical properties research has begun
- Technical Studies in progress
- Draft EIR anticipated in Late 2026

Traffic Studies

- Received approval from Caltrans on the Traffic Forecasting memos and Existing Conditions Report
- Traffic analysis for the environmental review phase is ongoing

Traffic Analysis Results

Alternative 1

Option A – Roundabouts

Option B – Signalized Intersections

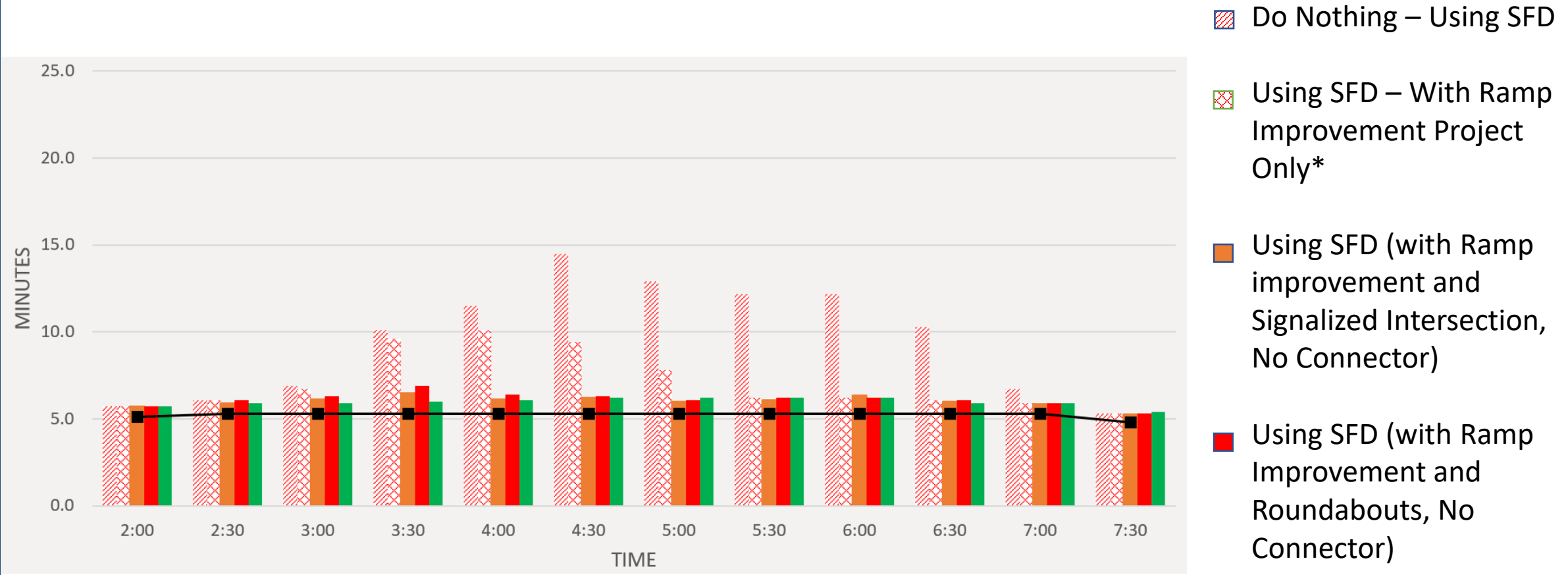
Project Area Travel Routes (NB US 101 to EB I-580)



■ Route 1: Sir Francis Drake Boulevard
 ■ Route 2: Bellam Boulevard
 ■ Route 3: Direct Connector
 ●●●●● Approximate Project Location (for illustrative purposes only)

To RSR Bridge - The Sir Francis Drake (SFD) Route

2035 Travel Times From Tamalpais Drive On-Ramp to RSR Bridge



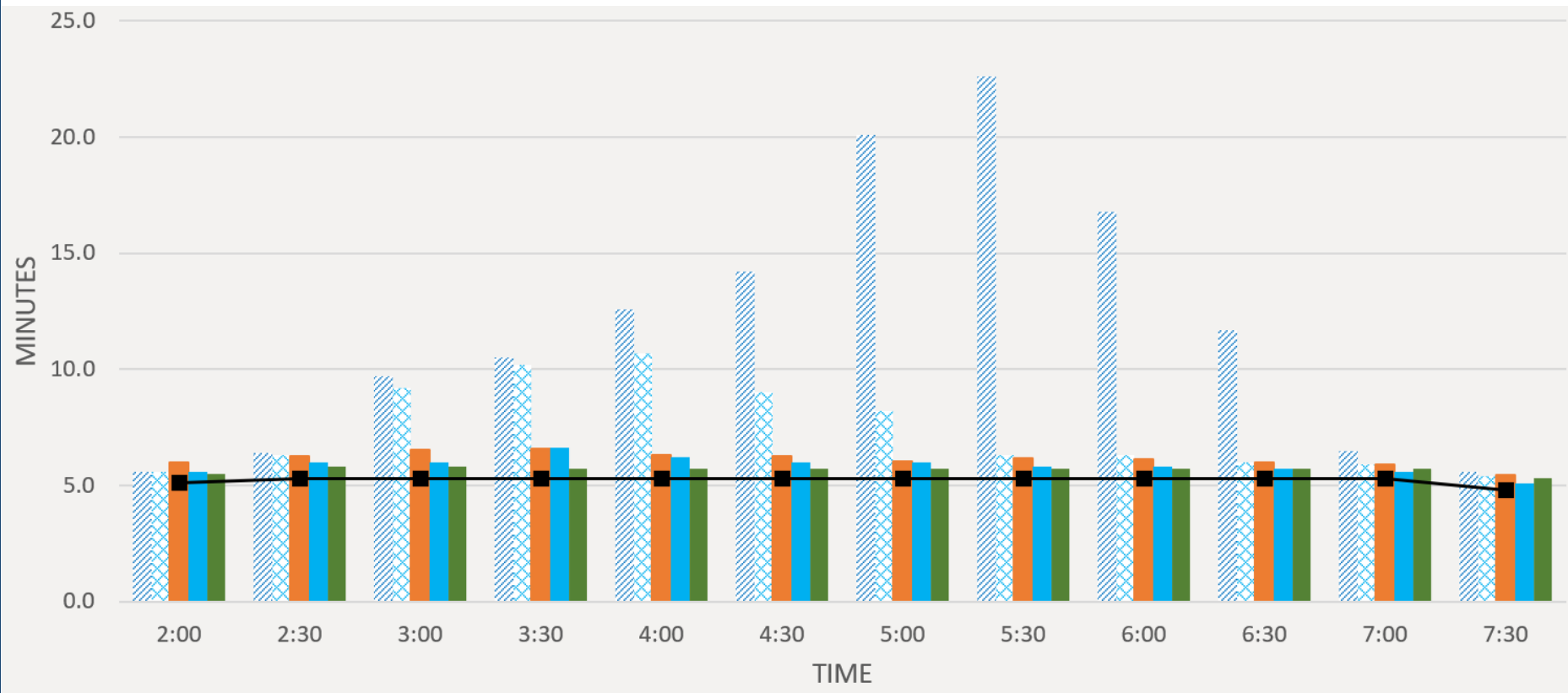
NB US 101 Tamalpais Drive On-Ramp to West End of RSR Bridge Through Sir Francis Drake Blvd
 Travel Distance = 3.5 miles

*Represents conditions following completion of Ramp Widening Project in Winter 2025

Using the Connector (With All Improvements)13

To RSR Bridge - The Bellam Route

2035 Travel Time From Tamalpais Drive On-Ramp to RSR Bridge

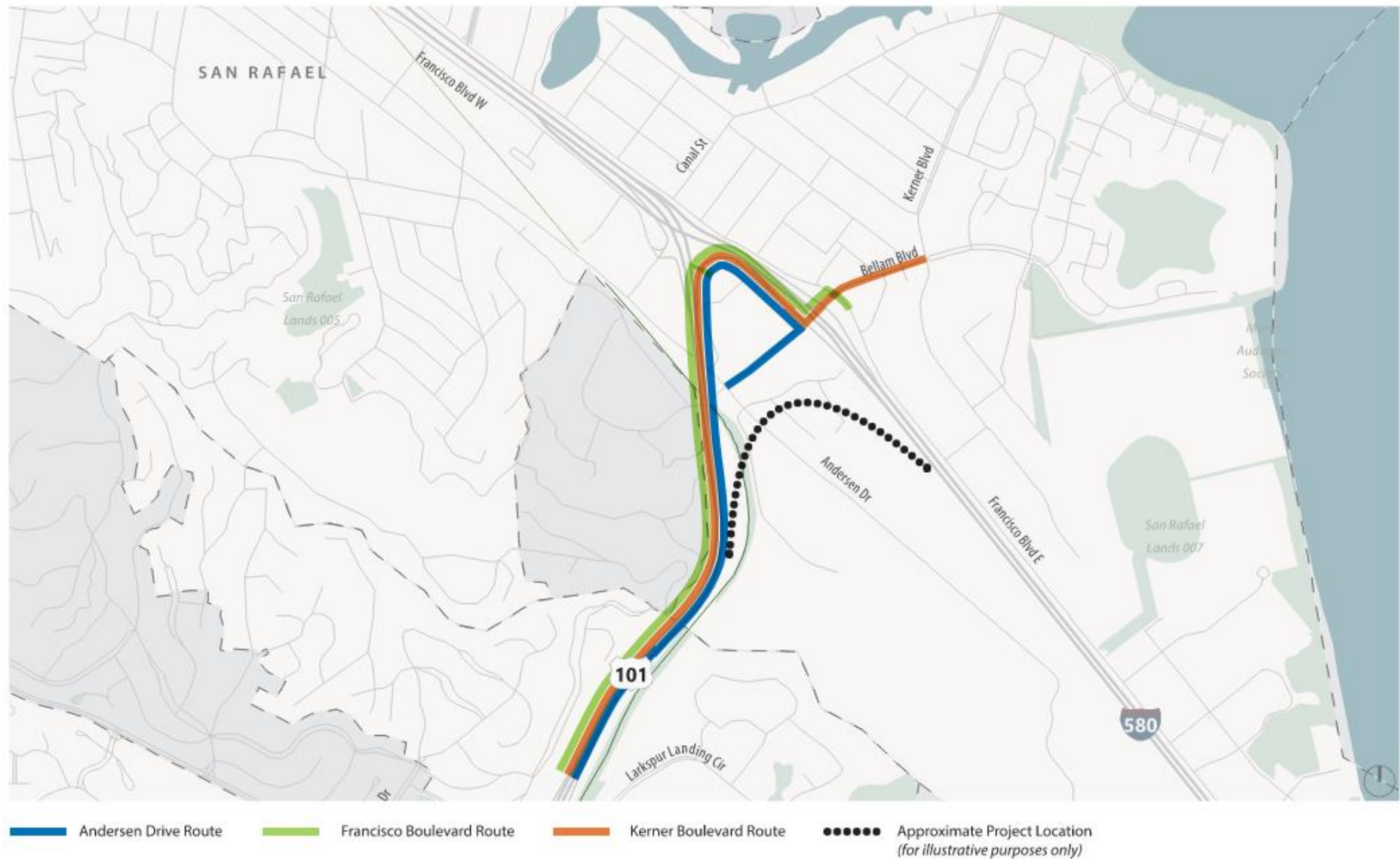


- Do Nothing – Using Bellam
- Using Bellam – With Ramp Improvement Project Only*
- Using Bellam (with Ramp improvement and Signalized Intersection, No Connector)
- Using Bellam (with Ramp Improvement and Roundabouts, No Connector)
- Using Bellam (with All Improvements)
- Using the Connector (With All Improvements)

NB US 101 Tamalpais Drive On-Ramp to West End of RSR Bridge Through Bellam
 Travel Distance = 4.7 miles

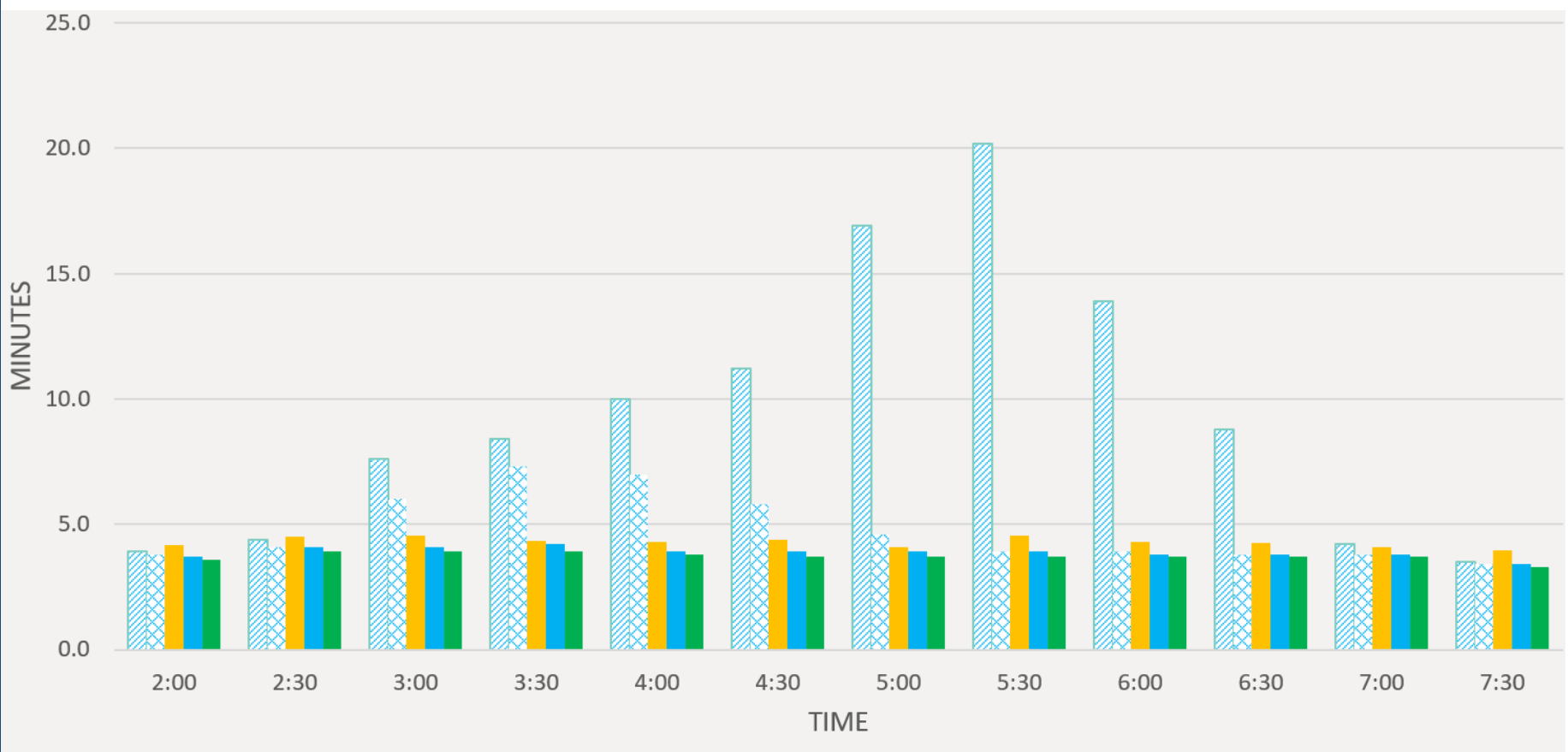
*Represents conditions following completion of Ramp Widening Project in Winter 2025

Project Area Travel Routes (NB US 101 to Kerner Blvd)



Bellam Blvd/Andersen Dr Destination

2035 Travel Time From Tamalpais Drive On-Ramp to Andersen/Bellam Intersection



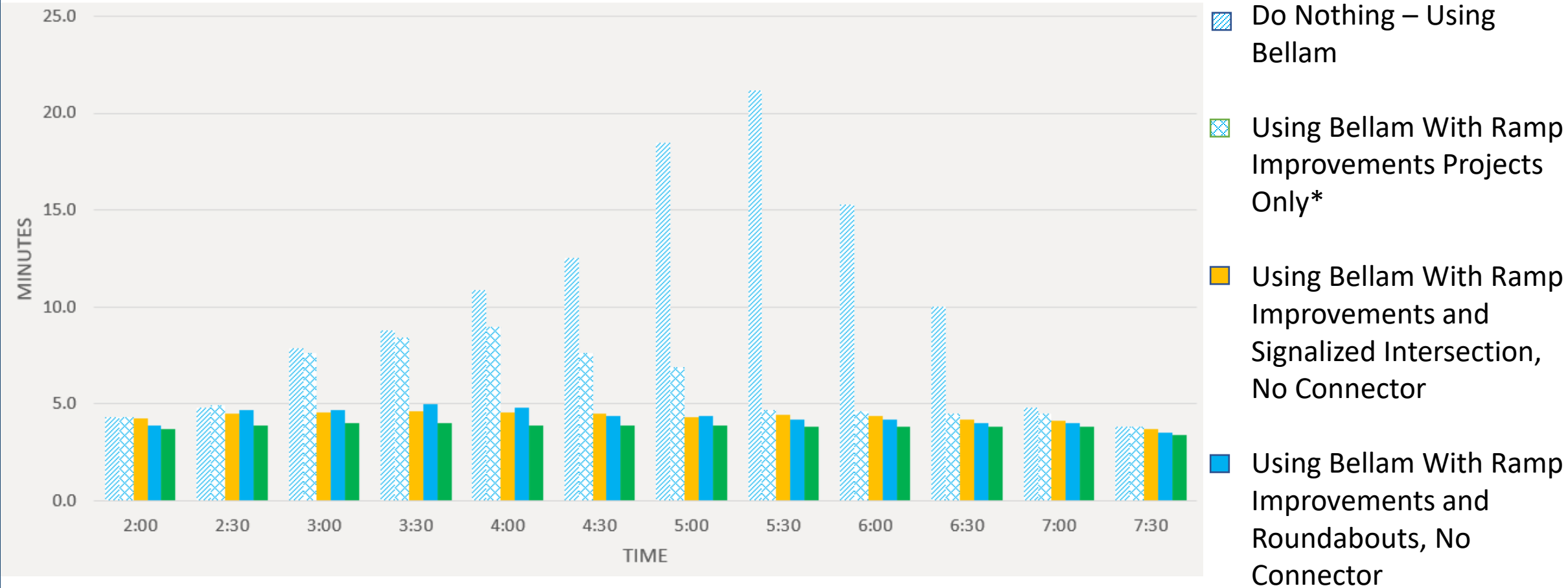
- Do Nothing – Using Bellam
- Using Bellam With Ramp Improvements Projects Only*
- Using Bellam With Ramp Improvements and Signalized Intersection, No Connector
- Using Bellam With Ramp Improvements and Roundabouts, No Connector
- Using Bellam, With All Improvements

NB US 101 Tamalpais Drive On-Ramp to Andersen Through Bellam -
 Travel Distance = 2.8 miles

*Represents conditions following completion of Ramp Widening Project in Winter 2025

Bellam Blvd/Francisco Blvd Destination

2035 Travel Time From Tamalpais Drive On-Ramp to Bellam/Francisco Intersection

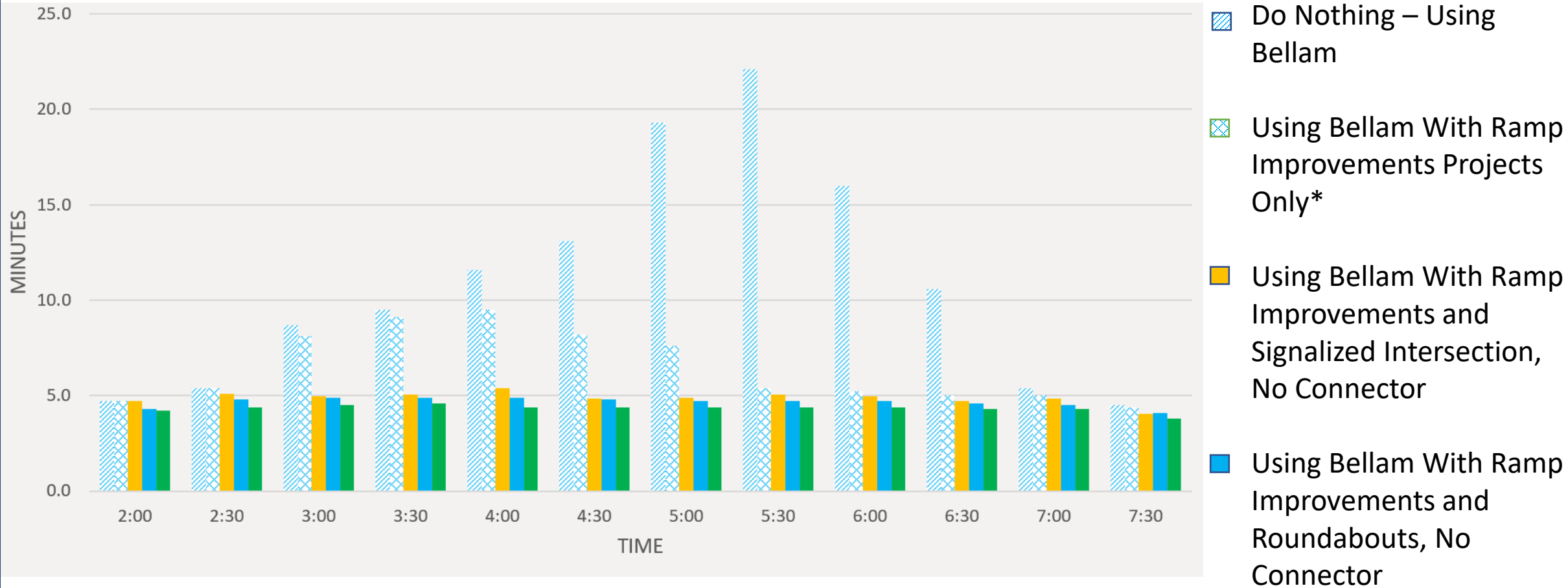


NB US 101 Tamalpais Drive On-Ramp to Francisco Blvd Through Bellam –
 Travel Distance = 2.7 miles

*Represents conditions following completion of Ramp Widening Project in Winter 2025

Bellam Blvd/Kerner Blvd Destination

2035 Travel Time From Tamalpais Drive On-Ramp to Bellam/Kerner Intersection



NB US 101 Tamalpais Drive On-Ramp to Kerner Blvd Through Bellam –
 Travel Distance = 2.9 miles

*Represents conditions following completion of Ramp Widening Project in Winter 2025

Travel Times Summary

Scenario	Peak Travel Time (PM)				
	To RSR Bridge Via Sir Francis Drake	To RSR Bridge via Bellam Blvd	To Andersen Drive via Bellam Blvd	To Francisco Blvd via Bellam Blvd	To Kerner Blvd via Bellam Blvd
No Build/No Ramp Improvements	14.5 Minutes	22.6 Minutes	20.2 Minutes	21.2 Minutes	22.1 Minutes
No Build with Ramp Improvements*	10.1 Minutes	10.7 Minutes	7.3 Minutes	9.0 Minutes	9.5 Minutes
No Build with Ramp Improvements and Signalized Intersections	6.5 Minutes	6.6 Minutes	4.6 Minutes	4.6 Minutes	5.4 Minutes
No Build with Ramp Improvements and Roundabouts	6.9 Minutes	6.6 Minutes	4.2 Minutes	5.0 Minutes	4.9 Minutes
With all Improvements (Connector + Local)	6.2 Minutes	5.8 Minutes	3.9 Minutes	4.0 Minutes	4.6 Minutes

*Represents conditions following completion of Ramp Widening Project in Winter 2025

2035 Project Area Travel Times (NB US 101 to EB I-580)

% Diversion of Total US 101 to RSR Bridge Traffic

PM Total (%)				
Scenario	Bellam	SFD	DC	Total
No Ramp Improvement/No Direct Connector/No Bellam Improvements	7%	93%	0%	100%
With Ramp Improvement/No Direct Connector/No Bellam Improvements	15%	85%	0%	100%
With Ramp Improvement/No Direct Connector/With Bellam Improvements	20%	80%	0%	100%
With Ramp Improvement/With Direct Connector/With Bellam Improvements	~0%	5%	95%	100%
Peak Period Volume (2:00 PM to 8:00 PM)	6,400 Vehicles			

Questions and Discussion from CWG

Bellam Blvd Off-Ramp Widening Project

Project Overview

- Project is intended to mitigate the traffic congestion on NB US 101 and EB I-580 at the Bellam Boulevard Off-ramp in San Rafael
- Adds a second lane to the off-ramp of Bellam Boulevard from NB US 101, separating the traffic turning left onto Bellam Boulevard from traffic turning right
- Additional improvements include concrete barrier, traffic signal modification, and storm drain improvements

Project is currently under construction

- Construction began March 2025
- Anticipated completion of construction in Winter 2025

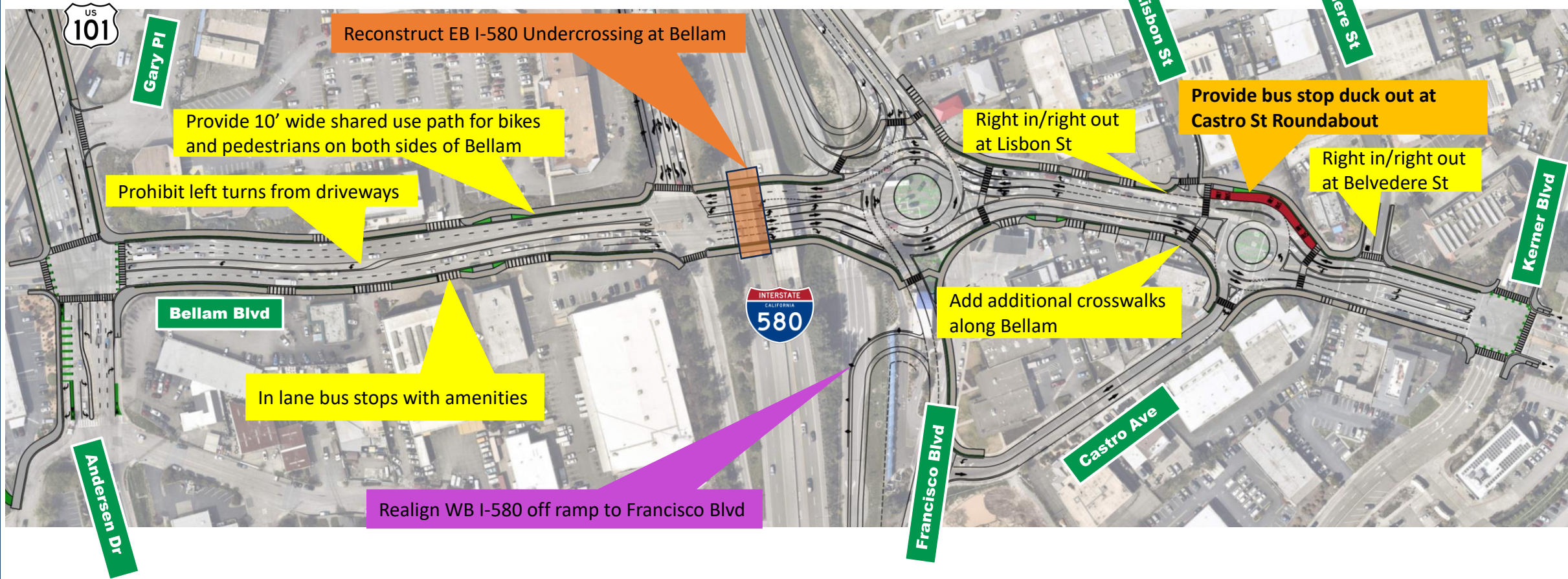


Bellam Blvd Concepts Update

Alternative 1 Bellam Blvd Bike and Pedestrian Access Improvements

Alternative 1 (Option A: Roundabouts)

Bellam Blvd

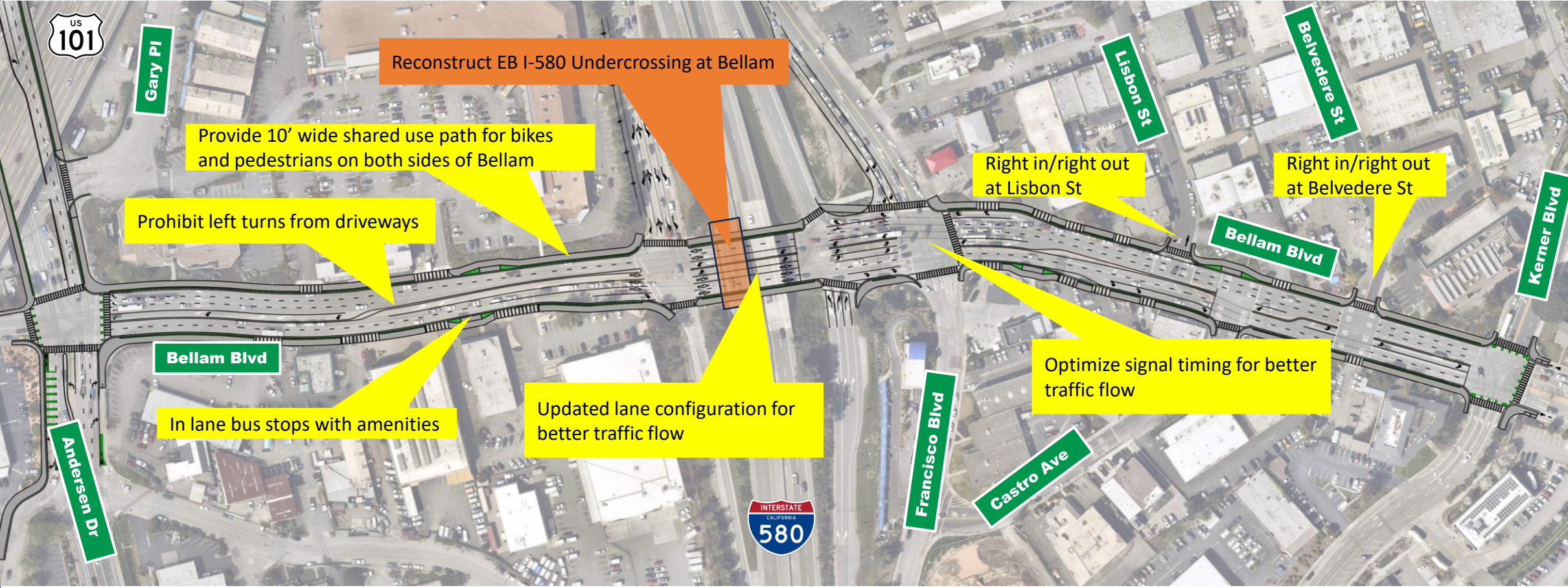


[Simulation Link](#)

Est Cost: \$20M - \$50M*
**In 2030 dollars*

Alternative 1 (Option B: Signalized Intersections)

Bellam Blvd



[Simulation Link](#)

Est Cost: \$20M - \$50M*
**In 2030 dollars*

Bellam Blvd Bike/Pedestrian Improvements

Bus Stops



NEW BUS SHELTER IN FRONT OF VALERO LOOKING TOWARDS CARDENAS



NEW BUS SHELTER AND PULL-OUT IN FRONT OF MORE FOR LESS



NEW BUS SHELTER IN FRONT OF VALERO FACING I-580 FREEWAY



NEW BUS SHELTER IN FRONT OF ROSS

Shared Use Path



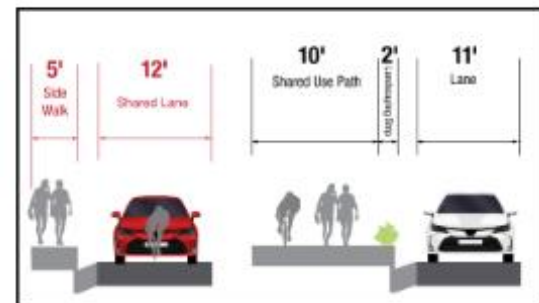
NEW PATH LOOKING TOWARD I-580 FREEWAY



NEW PATH LOOKING TOWARD I-580 FREEWAY



NEW PATH IN FRONT OF ROSS

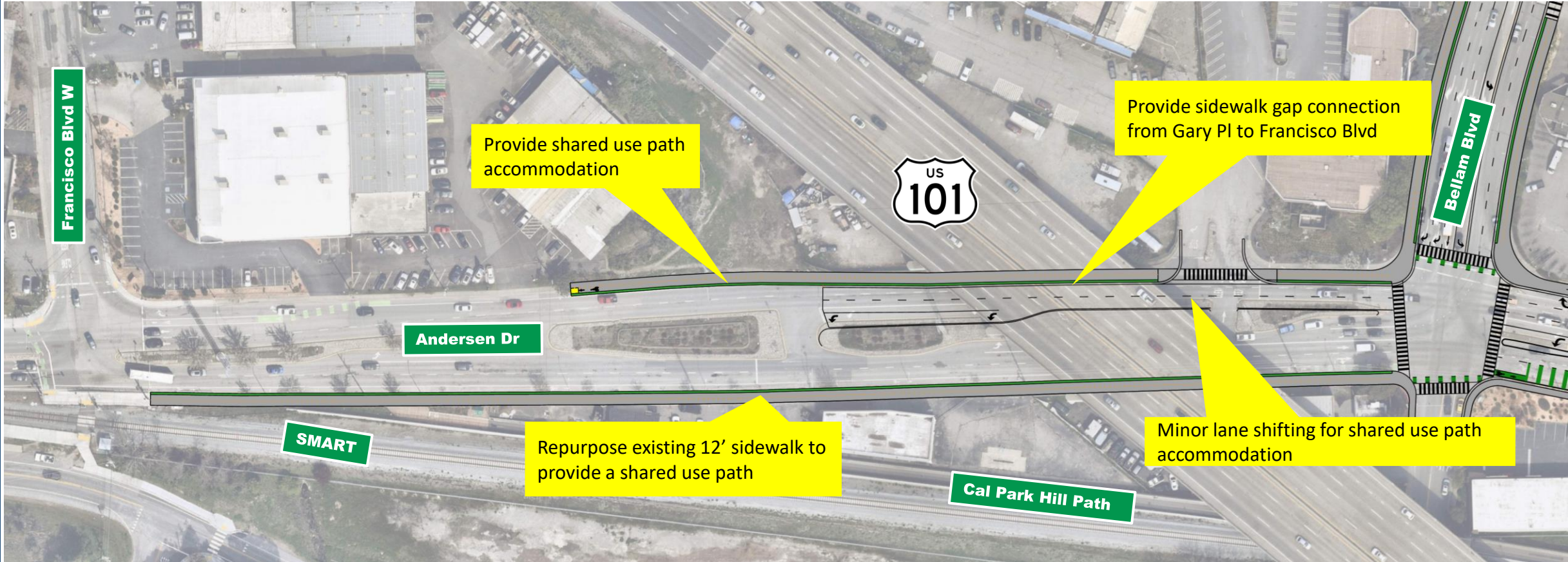


BEFORE AND AFTER PATH DESIGNS

Added Design Features Andersen Drive and Cal Park Path Bike and Pedestrian Access Improvements

Alternative 1 (Both Options)

Andersen Dr



Provide shared use path accommodation

Provide sidewalk gap connection from Gary Pl to Francisco Blvd

Andersen Dr

Repurpose existing 12' sidewalk to provide a shared use path

Minor lane shifting for shared use path accommodation

SMART

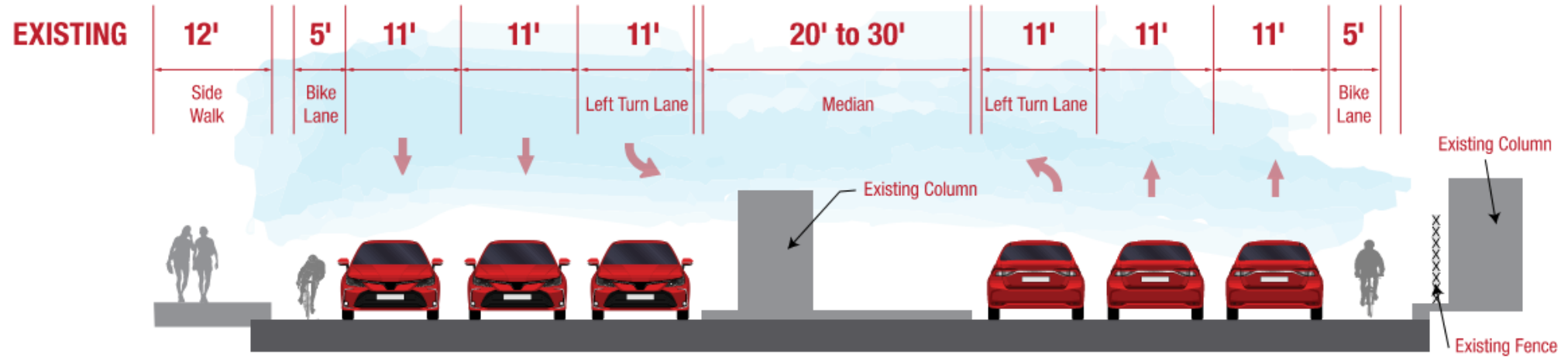
Cal Park Hill Path

Bellam Blvd

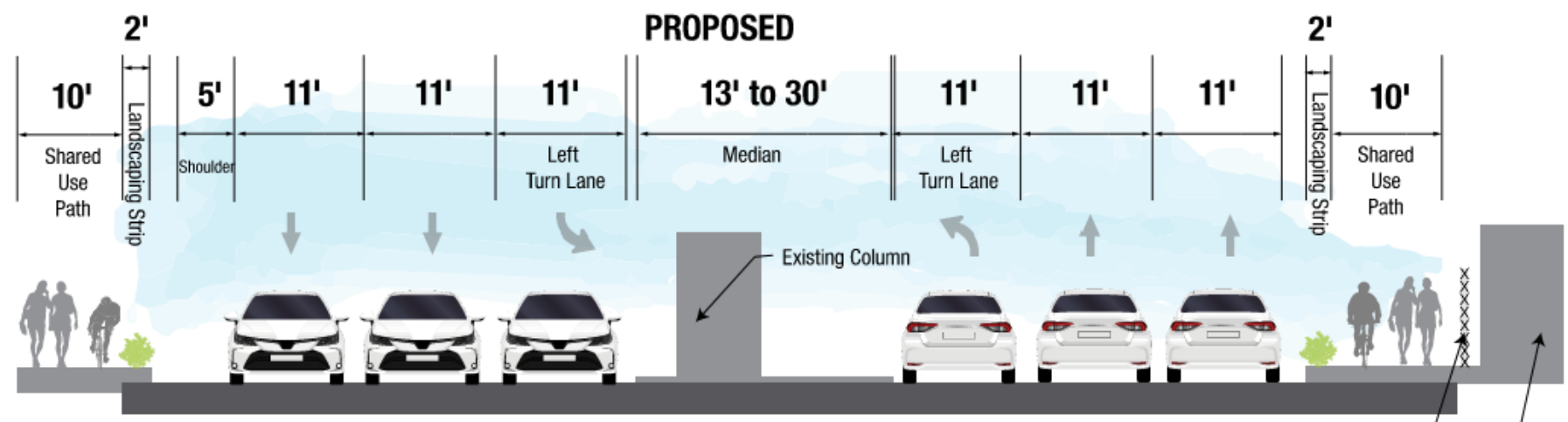


Alternative 1 (Both Options)

Andersen Dr under US 101



SECTION C-C

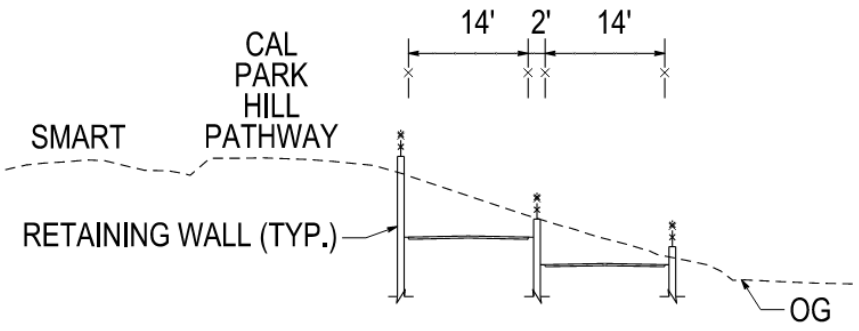
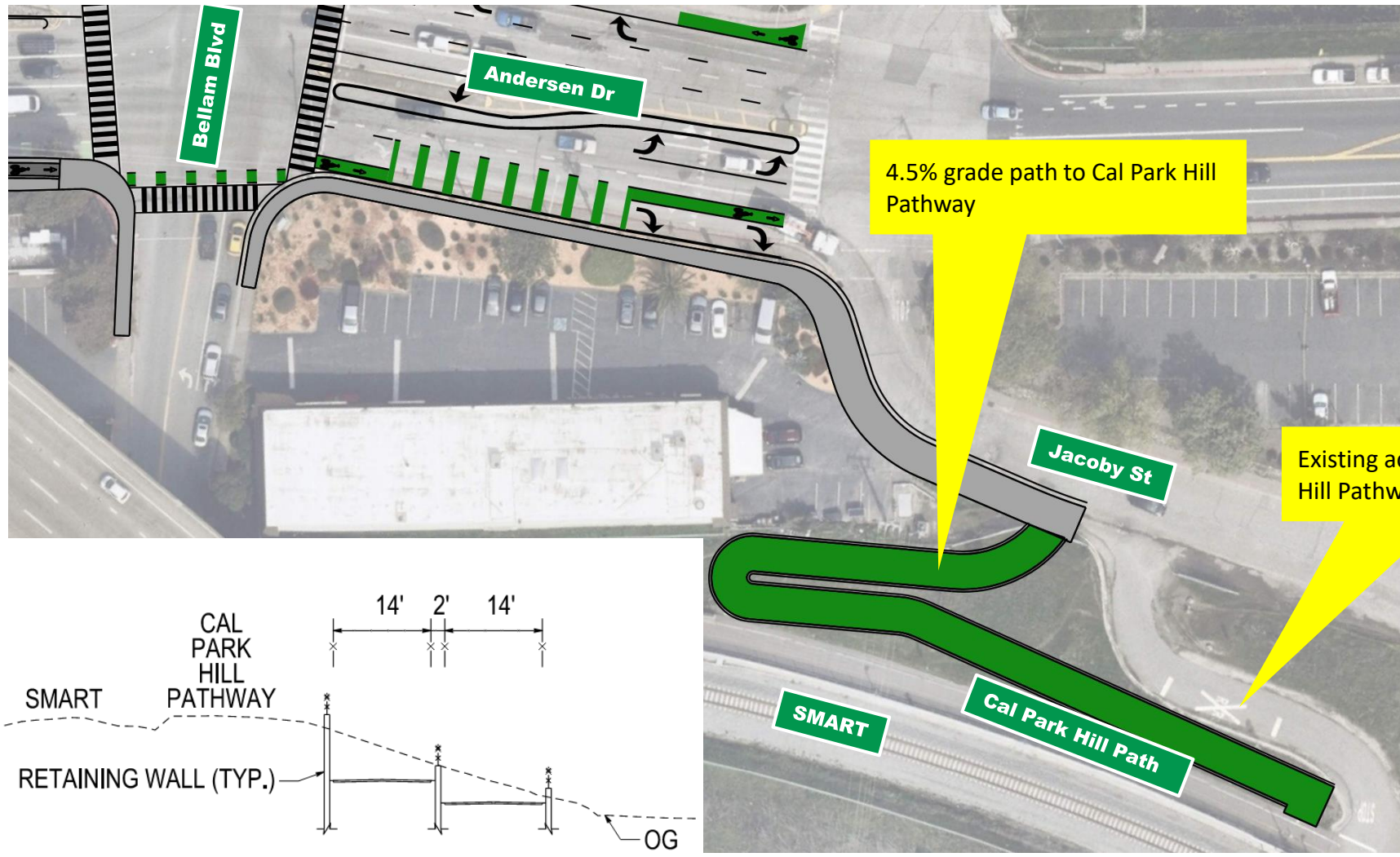


SECTION C-C

Existing Fence

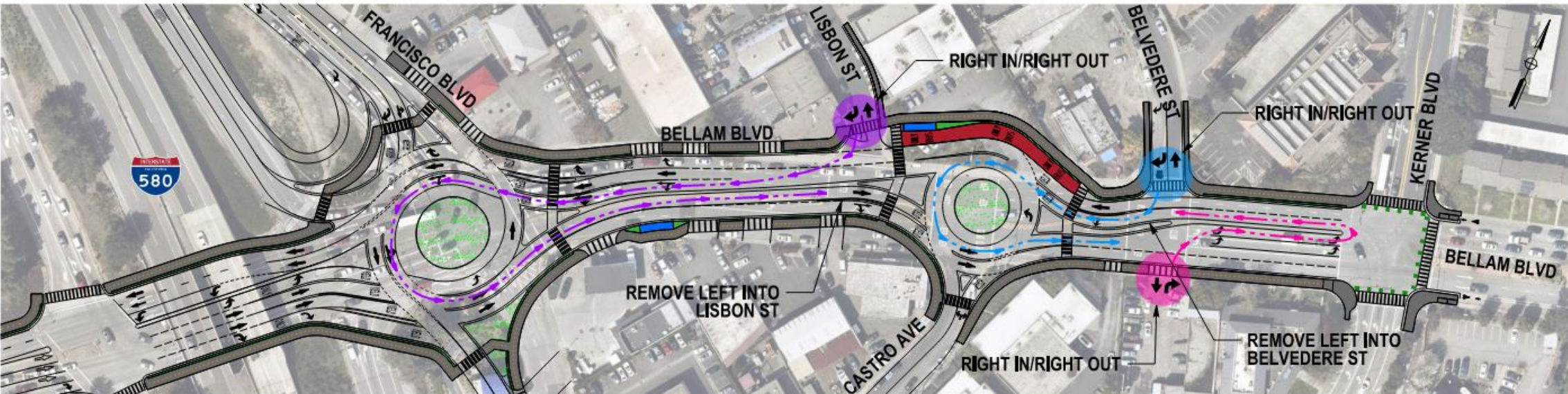
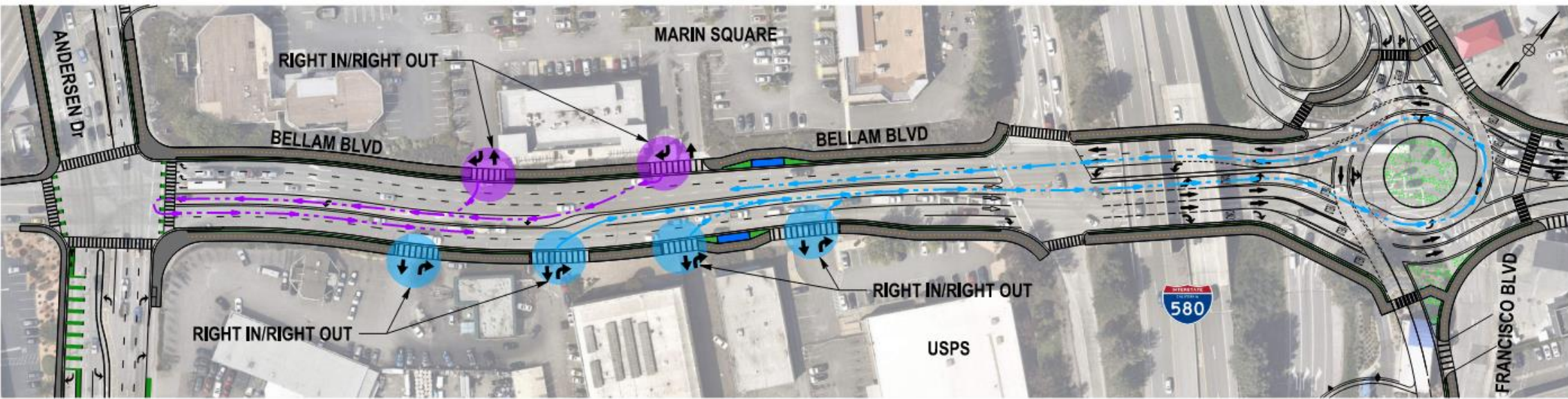
Existing Column

Alternative 1 (Both Options) Jacoby St Path Connector

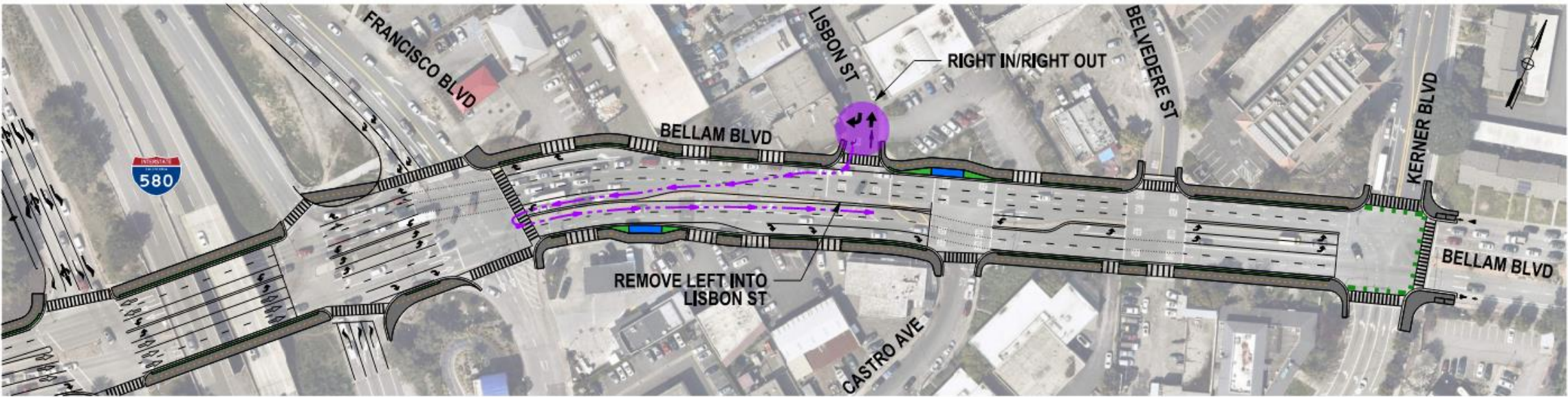
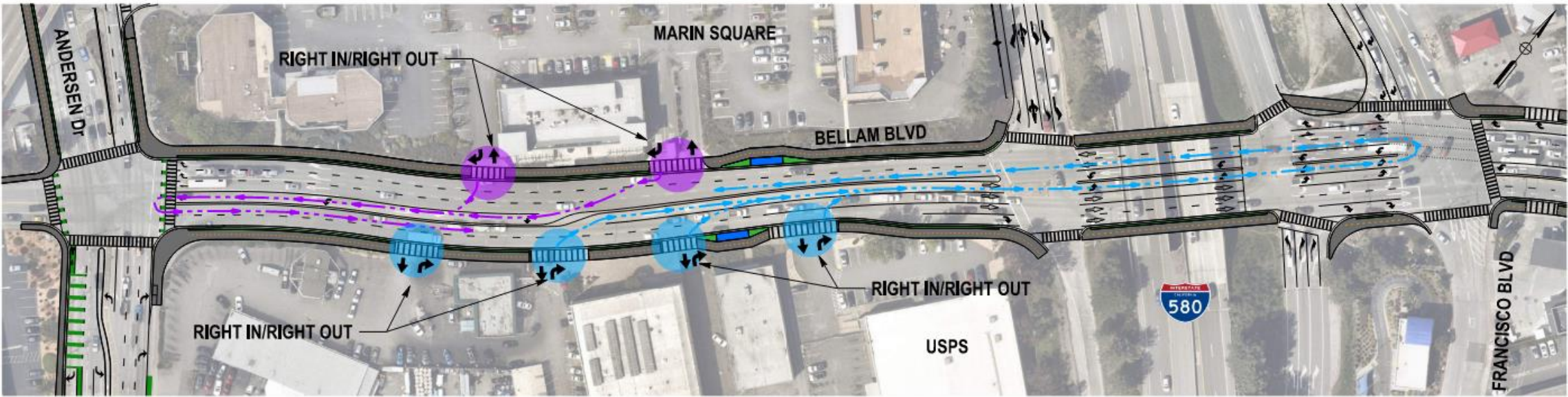


Bellam Blvd Driveway Access Modifications

Bellam Blvd Access Modifications (Alt 1A)



Bellam Blvd Access Modifications (Alt 1B)



Bellam Options – Status Evaluation

Roundabout Option Evaluation

- Evaluating impacts from the roundabouts option, including right of way and business access/egress impacts

Signalized Intersections Option Evaluation

- “Cluster signals” idea need Caltrans approval
- Without “Cluster Signals”, it may be hard to demonstrate traffic operations benefit for local **and** regional traffic

Options to consider

- Combination of both Options A and B. Roundabout at one intersection and signalized intersection improvement at the other

Bellam Blvd Workshop Summary

Workshop #1

- May 29 (English) and July 13 (Spanish)
- Estimated 225 participants
- Discussed congestion problems along freeway and Bellam Blvd

Workshop #2

- October 19 (Spanish) and November 14 (English)
- Estimated 175 participants
- Primary focus on Bellam Blvd and feedback on options

Workshop #3 (Spanish)

- May 3 (Spanish)
- Estimated 180 participants
- Presented updated Bellam Blvd Options, including transit and improved bicycle and pedestrian facilities

All Spanish workshops in collaboration with Canal Alliance and Multicultural Center of Marin



Bellam Blvd Workshop Summary

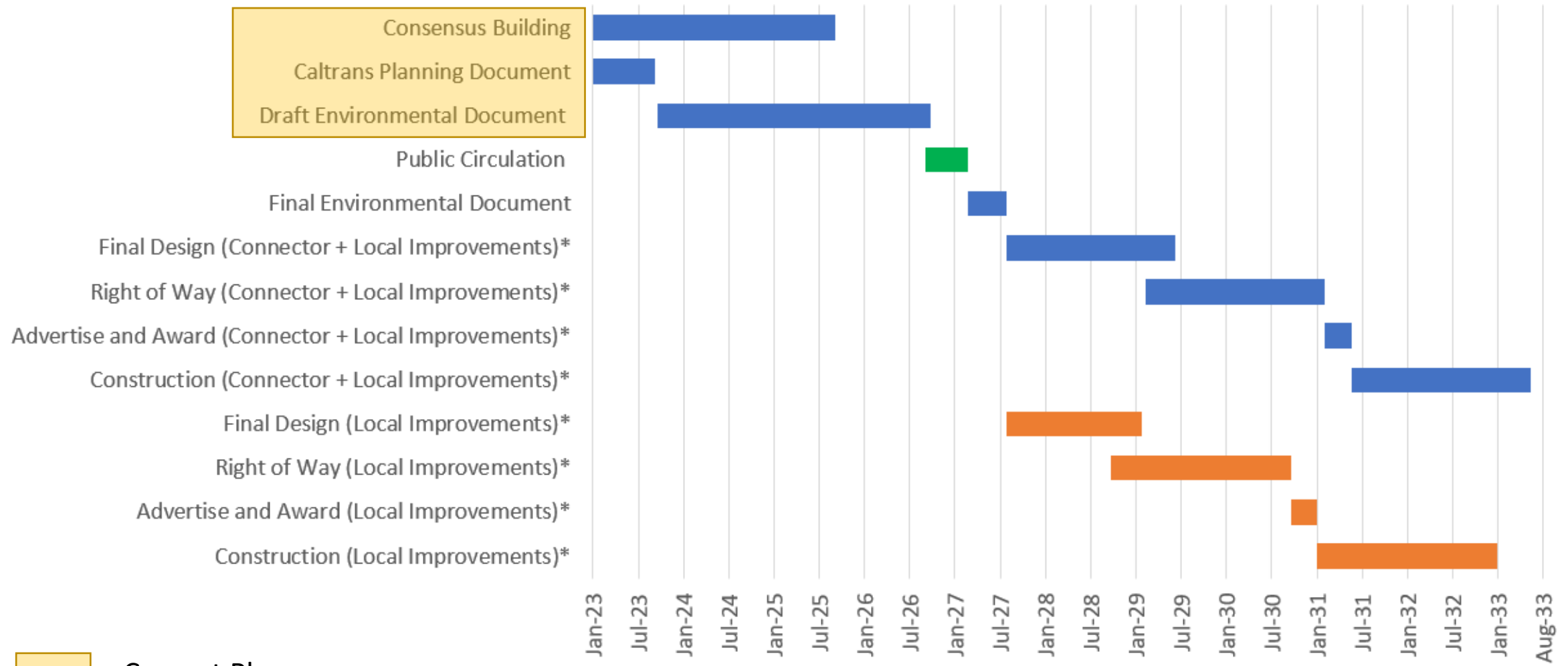
Summary of Comments received

- Safety/Traffic
 - Narrow sidewalks
 - Unsafe infrastructure for cyclists
 - Traffic signal timing

- Suggested improvements
 - More pedestrian crossings
 - Better street markings
 - Improved street lighting
 - Improve signal timing
 - Improved bicycle and transit infrastructure

Questions and Discussion from CWG

Project Summary Schedule



* Subject to funding availability

Next Steps

Upcoming Public Outreach Meetings

- Update with Voces del Canal in Fall 2025
- Quarterly Coordination with City of San Rafael
- Next CWG meeting in Fall 2025

Upcoming Environmental Phase Activities

- Continue development of environmental technical studies
- Continue geometry refinement
- Draft Traffic Operations Analysis Report – Fall 2025

Public Comment

Public Comment

Comments from Members of the Public

- In-person participants comment first
- Online participants raise hand if you have a comment
- Host will call on you and unmute you
- Please keep your comments to 3 minutes

Contact Information

- Send questions and comments:
 - Project Team, info@Marin101-580.com
 - Project website:
 - www.Marin101-580.com

**Thank You for
Your Participation**