

Sonoma-Marin Area Rail Transit District

General Manager's Report

January 21, 2026



General Manager's Report

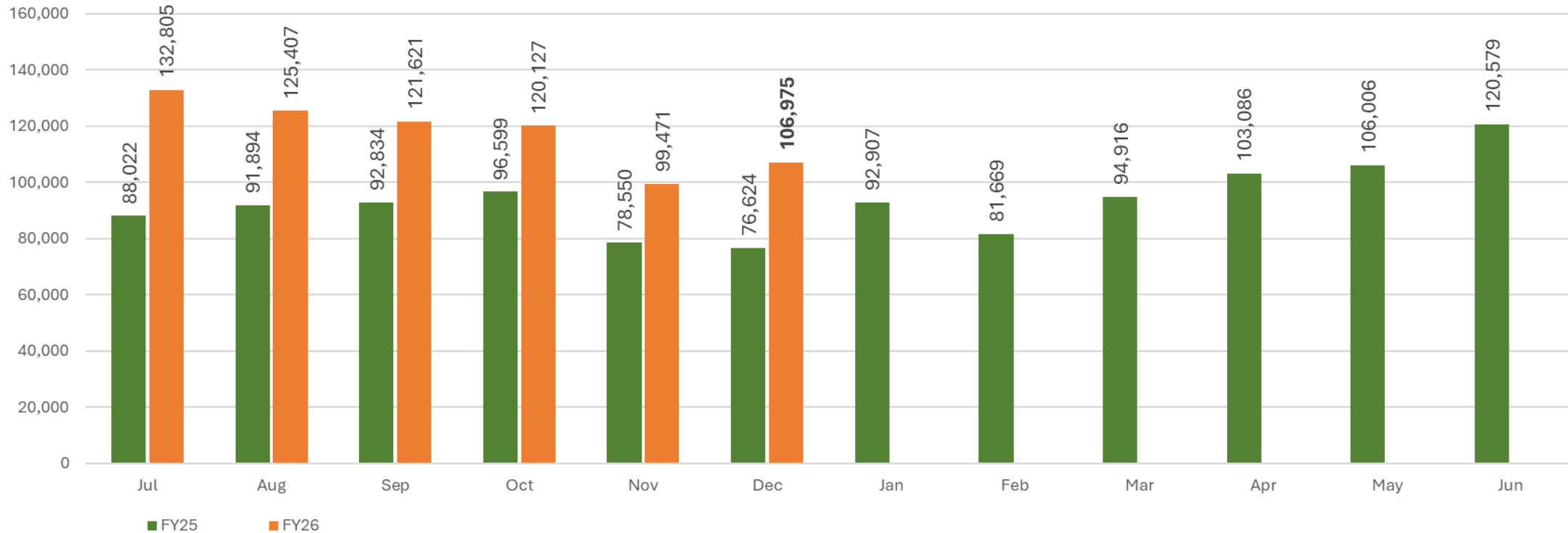
- Ridership Report
- Emergency Repairs
- Highlight of the Month
- Questions



SMART Ridership (Monthly)

December ridership = 106,975

- 40% higher than December 2024



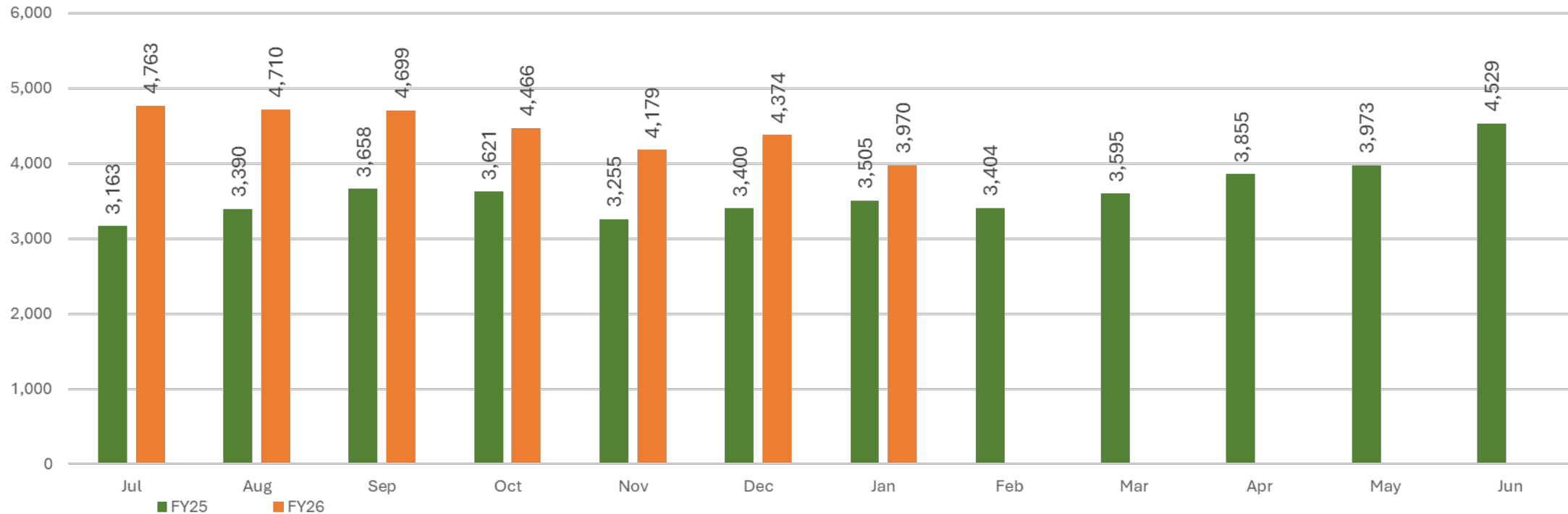
Average Weekday Ridership

December Average Weekday ridership: 4,374

- 29% over December 2024

January Average Weekday ridership to date: 3,970

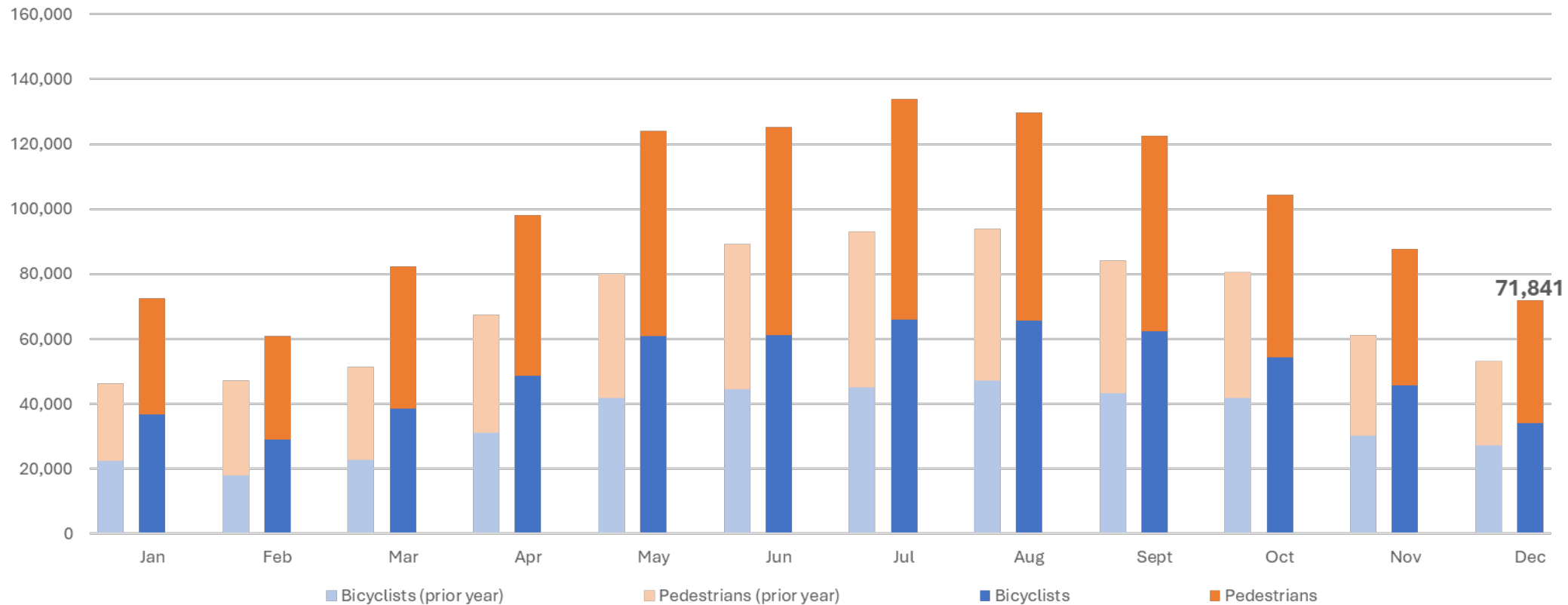
- 13% over January 2025



SMART Pathway Counts

December Pathway Trips = 71,847

- 35% over December 2024

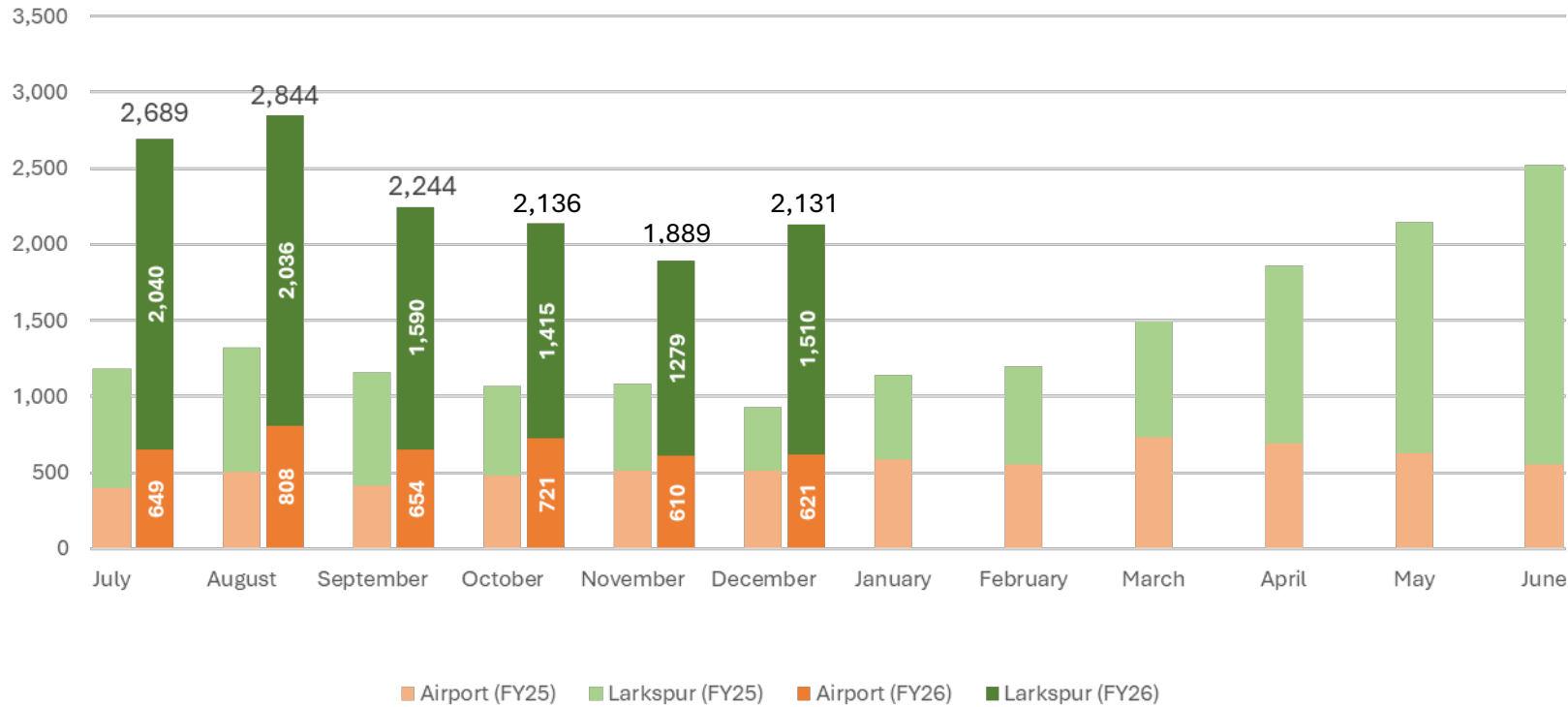


SMART Connect Ridership

December Connect Ridership: 2,131

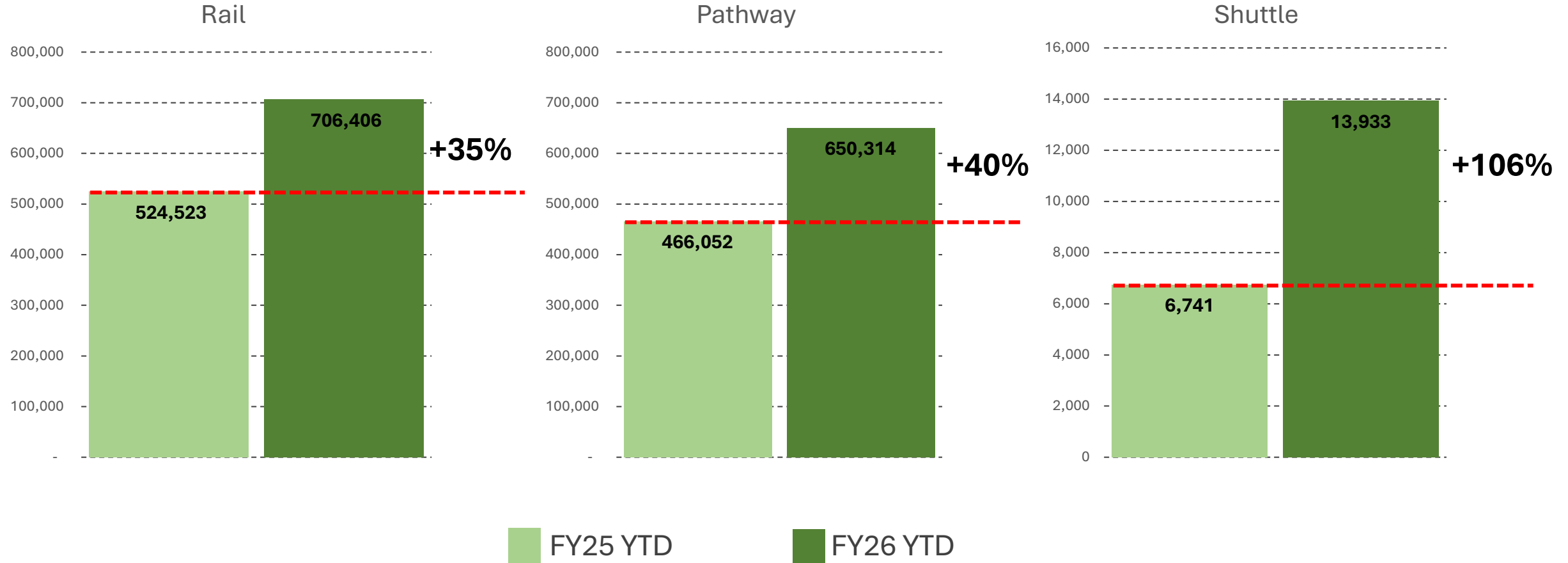


SMART Connect Ridership (FY25-FY26)



Mid-Year Trends

Year-to-date ridership/usership is up across SMART services



Black Point Bridge

- Work continues on Black Point Bridge
 - Black Point Bridge is currently out of service
 - Transloading underway at Schellville
 - Initial repairs were completed to turn the bridge enabling temporary freight delivery
 - In December, SMART conducted a thorough inspection of the 115-year-old bridge and found multiple components requiring immediate repair
 - Components are not available and must be manufactured
 - Estimated completion: 6 to 8 weeks



Hwy 37 Crossing

- Received report of damaged concrete crossing panel on west bound lane of Hwy 37 on 12/18 at 5:30 AM
- Freight crew mobilized to assess damage and determined contract support required
- Declared a local emergency to mobilize quickly
- Issued emergency purchase order for contractor with a not to exceed amount of \$100,000
- Coordinated with Caltrans for road closure at 8:30 AM
- Repairs completed and highway opened around 5:00 PM



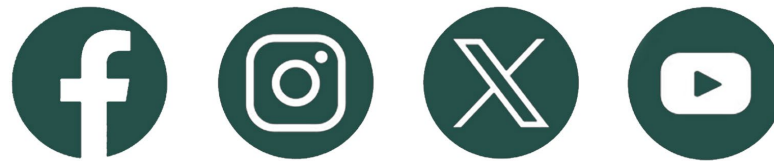
Highlight of the Month



Questions?



www.sonomamarintrain.org



Customer Service:

CustomerService@sonomamarintrain.org

(707) 794-3330



Sonoma-Marin Area Rail Transit District

General Manager's Report

February 18, 2026



General Manager's Report

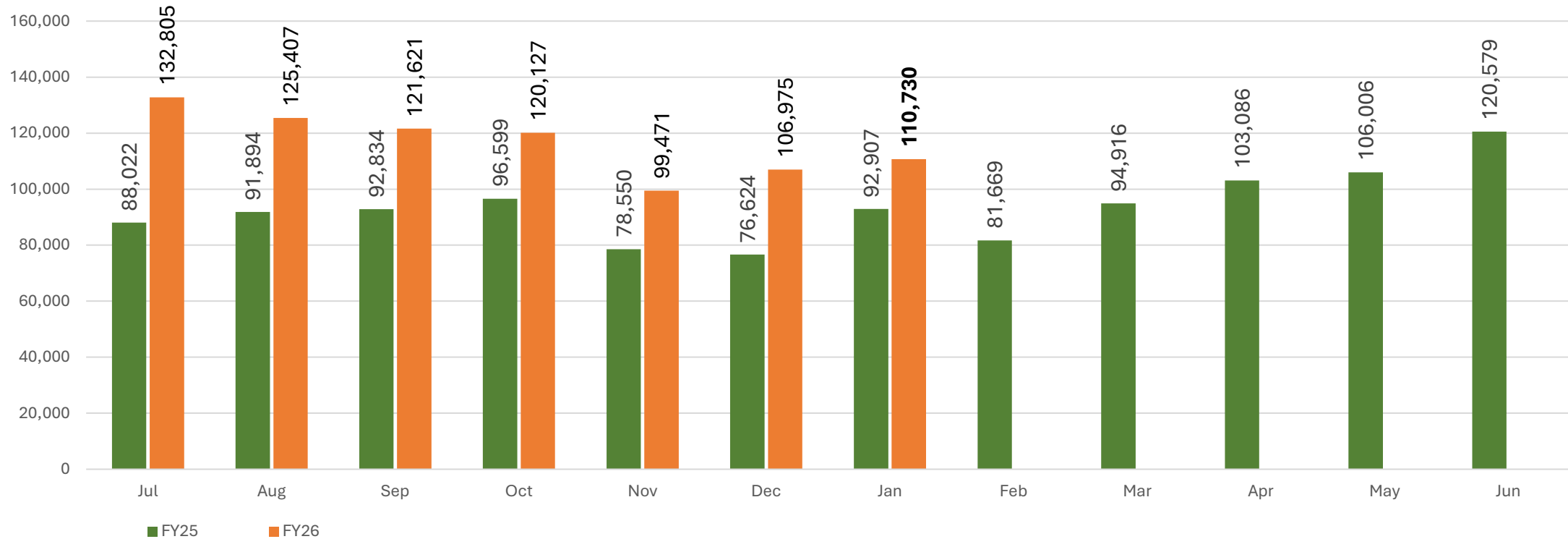
- Ridership Report
- Healdsburg Extension Open House
- Employees of the Quarter
- Questions



SMART Ridership (Monthly)

January ridership = 110,730

- 19% higher than January 2025
- 54% higher than January 2020 (pre-COVID)



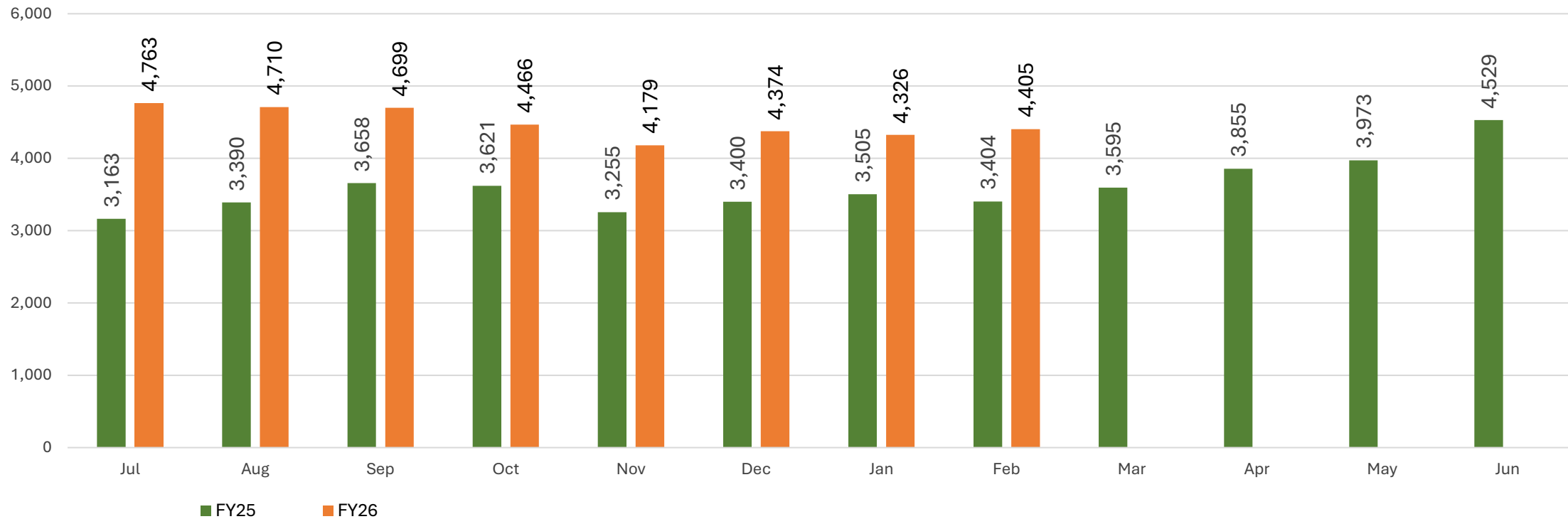
Average Weekday Ridership

January Average Weekday ridership: 4,326

- 23% over January 2025

February Average Weekday ridership to date: 4,405

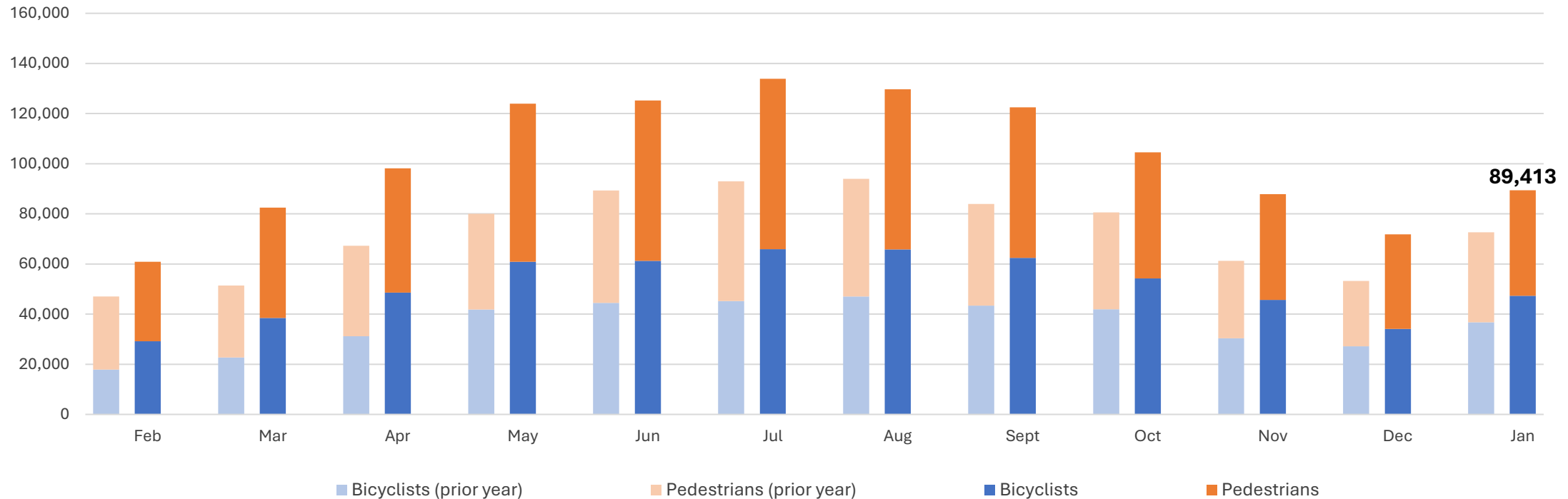
- 29% over February 2025



SMART Pathway Counts

January Pathway Trips = 89,413

- 23% over January 2025



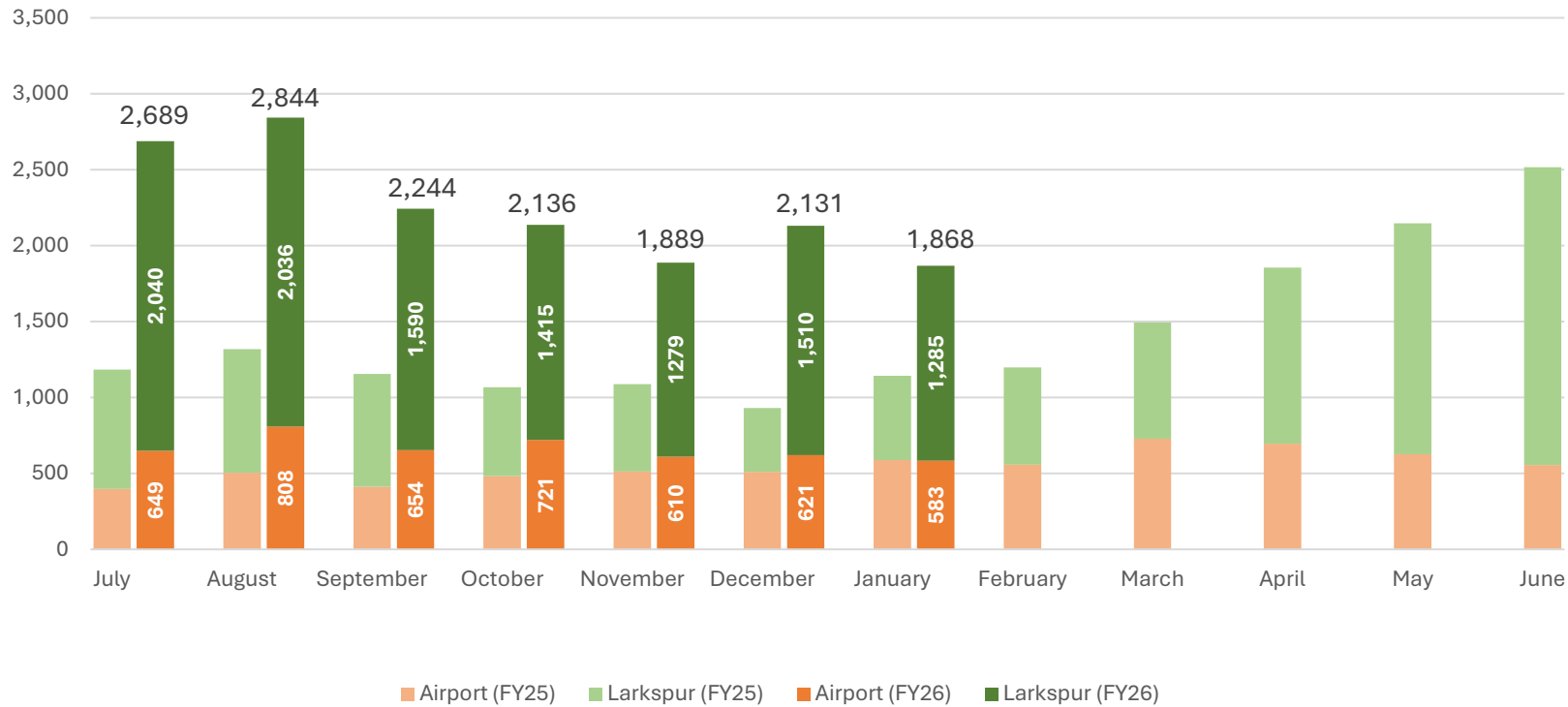
SMART Connect Ridership

January Connect Ridership = 1,868

- 63% higher than January 2025



SMART Connect Ridership (FY25-FY26)



Healdsburg Extension Community Open House

Monday, March 23, 2026

5:30–7:30 PM

Multipurpose Room

Abel de Luna Community Center

1557 Healdsburg Ave, Healdsburg, CA 95448



Employee of the Quarter

- Today we are recognizing employees for the 4th Quarter of 2025.
- Employees are nominated by their peers.
- Winners receive a certificate and a day off with pay.

Q4 2025 Winners

- Administration
- Samantha Frias,
Administrative Assistant



Q4 2025 Winners

- Maintenance of Way – Track and Signals
 - Jonathan Limon-Lopez, Track Supervisor
 - Nicholas DeRenzi, Track Maintainer
 - Jeffrey Limon-Lopez, Signal Supervisor
 - Eduardo Mendez, Track Maintainer
 - Daniel Foster, Signal Supervisor



Questions?